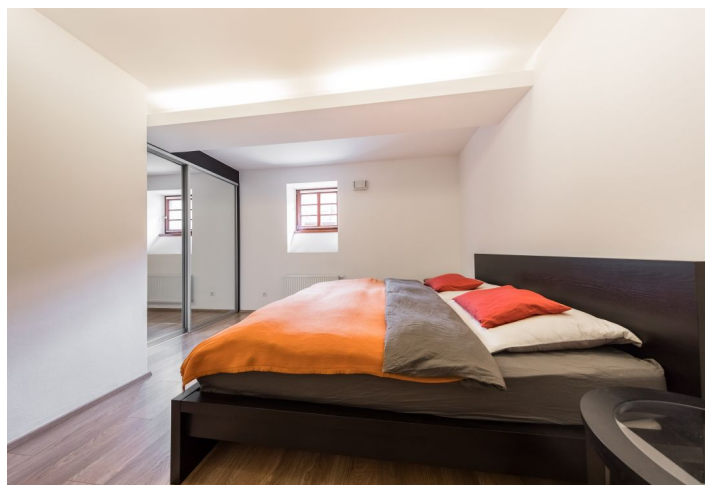


## Apartment Three-bedroom (4+kk)

Rented

110 m<sup>2</sup>, Prague 9, Hloubětín, K Náhonu



## Apartment Three-bedroom (4+kk)

Rented

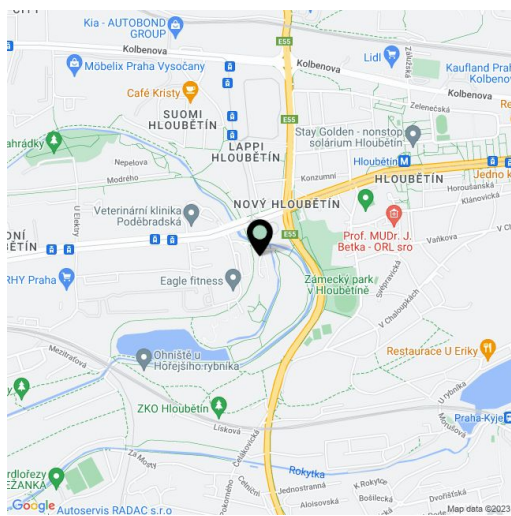
110 m<sup>2</sup>, Prague 9, Hloubětín, K Náhonu

Total area	110 m <sup>2</sup>
Parking	Garage parking.
Garage	Yes
Cellar	Yes
PENB	G
Reference number	26482
Available from	Immediately

Split-level flat in one of the few preserved Rondo-Cubist buildings in Prague. This partly furnished 3-bedroom 2-bathroom flat is on the upper ground floor in the reconstructed listed building - part of the "Kejřův mlýn" gated residential project (part is formed by newly constructed buildings) with 24-hour security. Conveniently secluded and surrounded by a forest park with a bike path, in Hloubětín, Prague 9. The building and flat were renovated with attention to preserving the historic architectural details. Amenities include on-site children's playground, on-site property management and a monitored parking lot in front of the project. Full amenities within easy reach, moments to a tram stop, about a 10 minute walk to Hloubětín metro station, a 15-20 minute drive to the city center.

The upper level features living room with a fully fitted open kitchen and dining area, one bedroom with an en-suite bathroom (bathtub, toilet) and entry hall with a walk-in closet. The lower floor includes two more bedrooms, family bathroom (bathtub, toilet) and utility room.

Green views, high ceilings, stucco ornaments, large windows, wooden and laminated floors, security entry door, built-in wardrobes, dishwasher, two cellars. Can be unfurnished. One garage parking space included. Monthly deposit for common building charges, water and heating CZK 8,000. Electricity is billed separately.

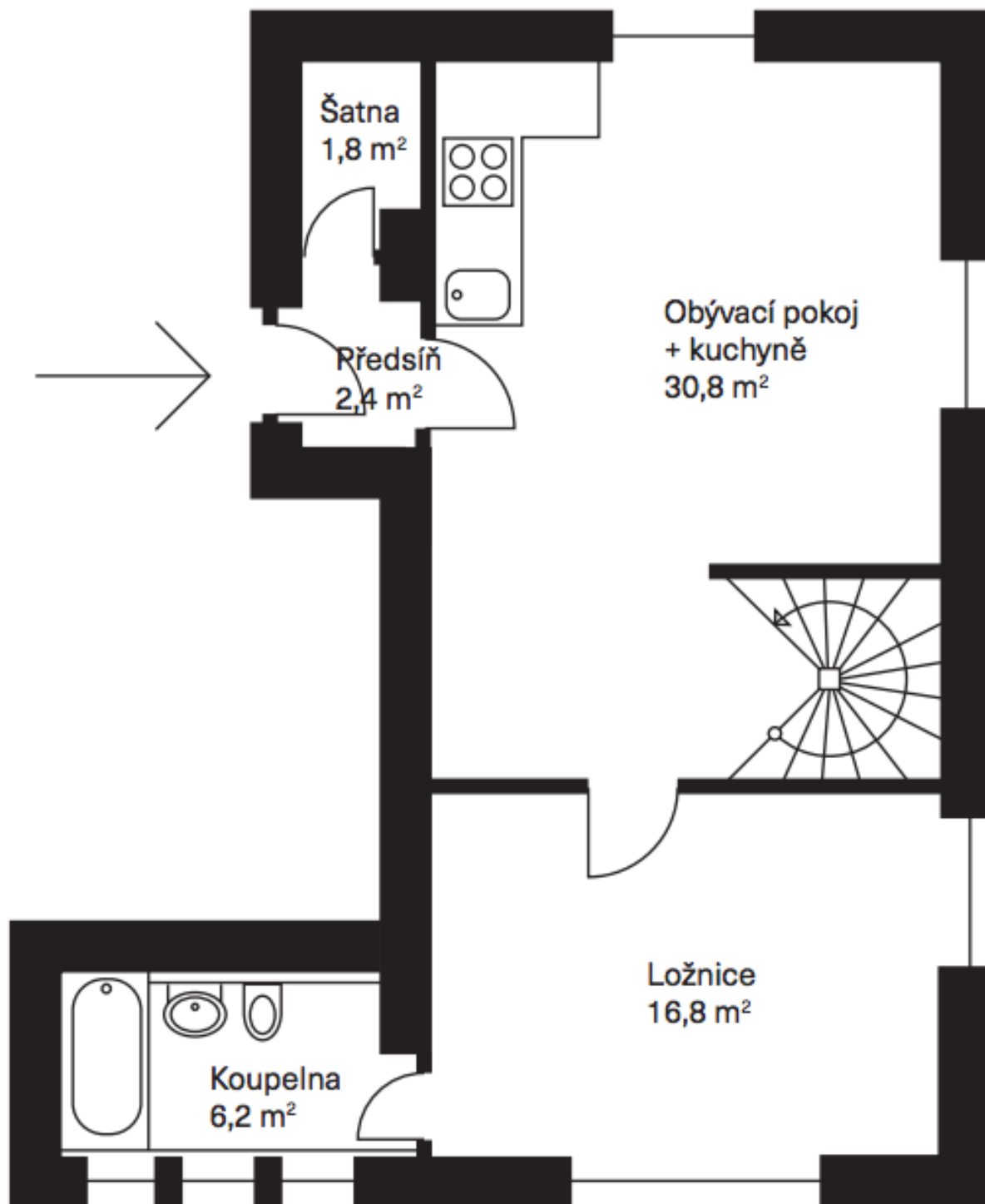


\* Area of the unit according to the Civil Code. The area consists of the sum total area of the entire unit bounded by perimeter walls.

## Apartment Three-bedroom (4+kk)

Rented

110 m<sup>2</sup>, Prague 9, Hloubětín, K Náhonu



## Apartment Three-bedroom (4+kk)

Rented

110 m<sup>2</sup>, Prague 9, Hloubětín, K Náhonu

