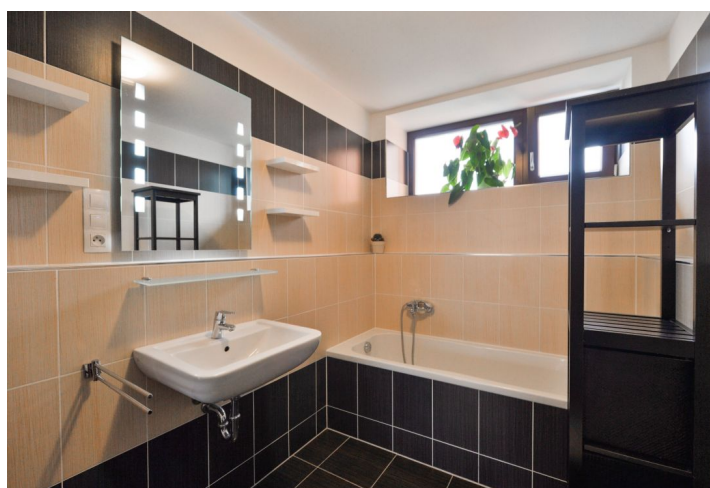
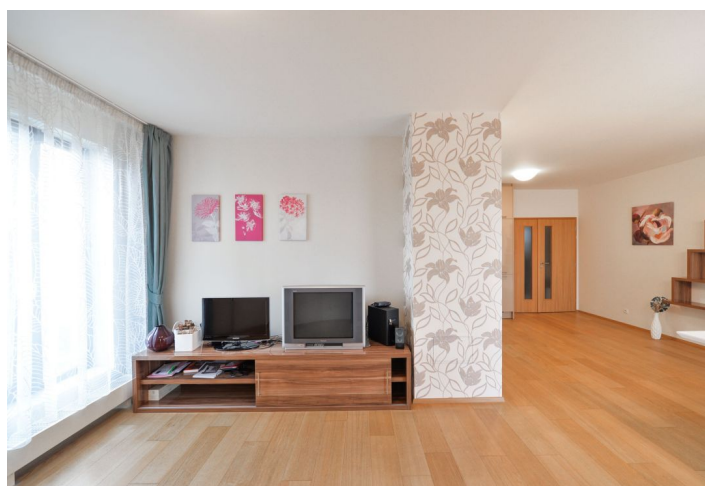


Apartment Two-bedroom (3+kk)

Rented

94 m², Prague 9, Hloubětín, Nademlejská



Apartment Two-bedroom (3+kk)

Rented

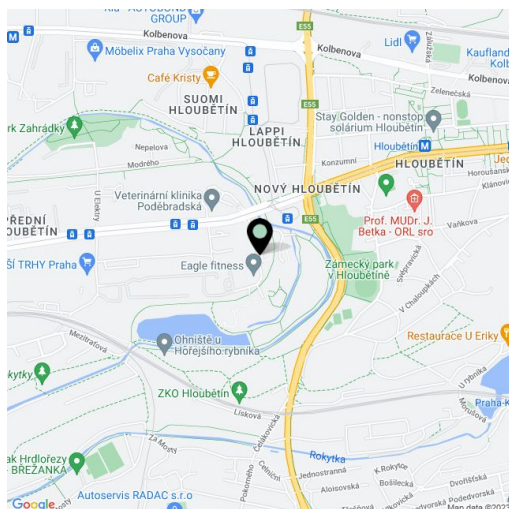
94 m², Prague 9, Hloubětín, Nademlejská

Total area	100 m ²
Floor area*	94 m ²
Balcony	6 m ²
Parking	Garage parking.
Garage	Yes
Cellar	-
PENB	G
Reference number	26342
Available from	Immediately

Modern 2-bedroom flat partly equipped with furniture, with a balcony offering beautiful green views of a park with ponds and mature trees. Situated on the second floor of the Kejřův Park gated residential project with reception, 24-hour security and underground parking. Project amenities include a 3D theater, park, mini golf, pond, sandy beach with pier, playgrounds, table tennis, volleyball courts and a bicycle/inline path. Full amenities, including kindergartens, schools, medical facilities and shops within easy reach.

The interior features a comfortable living room with a fully fitted open kitchen and access to the balcony, two separate bedrooms, bathroom with bathtub and toilet, a large walk-in closet, a guest toilet, and an entrance hall.

Built-in wardrobes and storage, oak veneer floors and tiles, large windows, security entry door, induction cooktop, dishwasher, microwave oven, TV, chip entry to the building. One garage parking space available. Common building charges approx. CZK 5,000/month. Utilities are billed separately. Excellent environment for families with children.



* Area of the unit according to the Civil Code. The area consists of the sum total area of the entire unit bounded by perimeter walls.