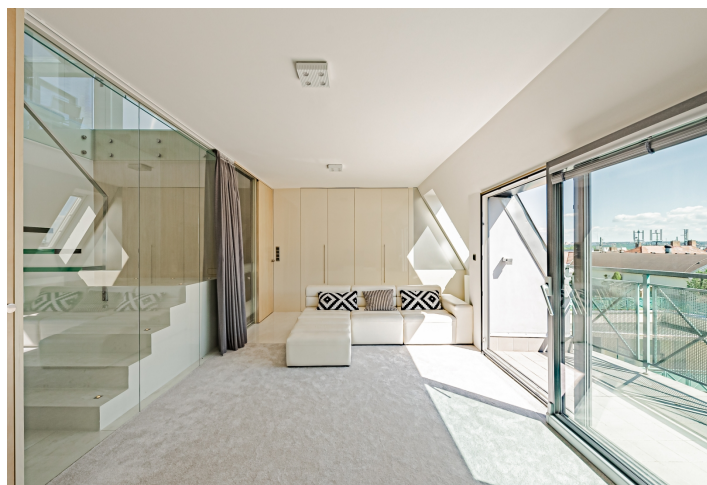


Apartment One-bedroom (2+kk)

€ 2 403 | CZK 60 000

135 m², Prague 3, Žižkov, V Kapslovně



Apartment One-bedroom (2+kk)

€ 2 403 | CZK 60 000

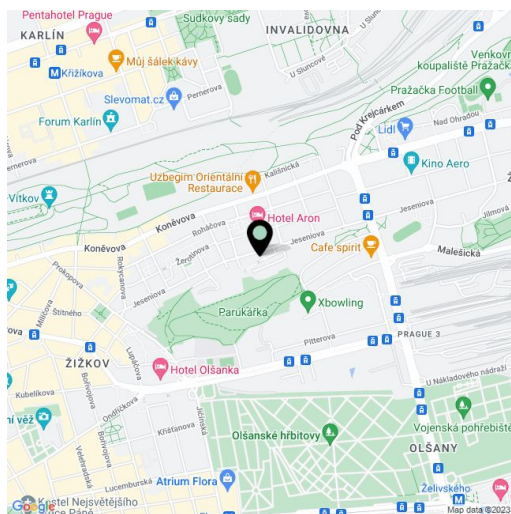
135 m², Prague 3, Žižkov, V Kapslovně

Total area	190 m ²
Floor area*	135 m ²
Balcony	5 m ²
Terrace	50 m ²
Parking	Garage parking space included.
Garage	Yes
Cellar	Yes
Service price	Deposit for common building charges CZK 6,000 per month. Electricity will be transferred to the tenant.
PENB	C
Reference number	26259
Available from	01.06.2025

Boasting a 50 sq. m. roof terrace with panoramic views of Prague, this fully furnished duplex with 2 bathrooms and panoramic views is situated on the 6th and 7th top floor of a modern residential project with an elevator and underground parking. Located in a quiet part of Prague 3, in close vicinity of the popular Parukářka Park, and within walking distance of the Flora metro station and shopping mall. Bus and tram connections, a short drive to the city center.

The lower level includes one bedroom with a walk-in closet, a full en-suite bathroom, and a balcony, a utility room, a fitted walk-in closet, and an entrance hall. The upper floor features a living room with a fully fitted open plan kitchen, a shower bathroom with a toilet, and access to the roof terrace with a storage room.

Tiles, carpets, underfloor heating, security entry door, automatic exterior blinds, air-conditioning in the living room, central switch, washing machine, induction cooktop, American style fridge, dishwasher, microwave oven, two TV sets, WiFi, cellar, chip entry to the building. One garage space included.



* Area of the unit according to the Civil Code. The area consists of the sum total area of the entire unit bounded by perimeter walls.