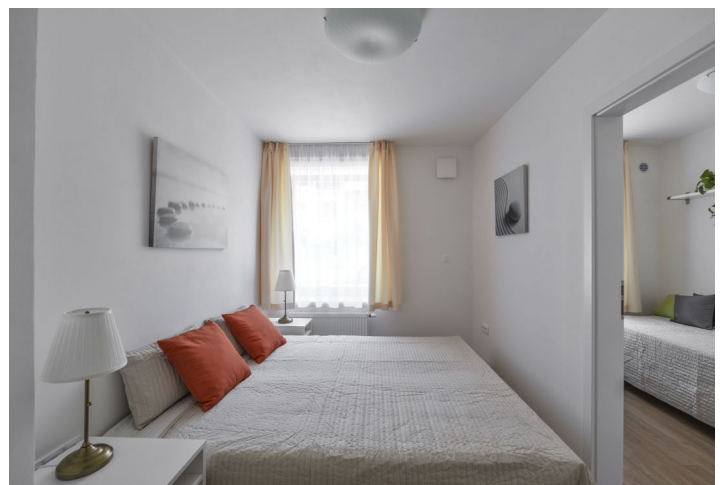


Apartment Two-bedroom (3+kk)

Rented

56 m², Prague 5, Košíře, Průchova



Apartment Two-bedroom (3+kk)

Rented

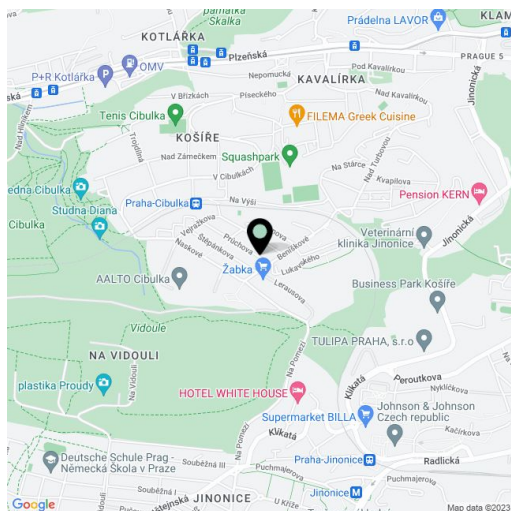
56 m², Prague 5, Košíře, Průchova

| | |
|------------------|----------------------|
| Total area | 89 m ² |
| Floor area* | 56 m ² |
| Terrace | 33 m ² |
| Parking | Parking on the plot. |
| Garage | Yes |
| Cellar | - |
| PENB | C |
| Reference number | 26232 |
| Available from | Immediately |

Reconstructed fully furnished 2-bedroom flat with a 33 m² terrace, on the ground floor of a newly renovated corner townhouse, situated in a tranquil street in a green residential neighborhood near the Cibulka natural park. Quick access to Anděl metro station and commercial center. Tennis courts, jogging path, playgrounds, kindergarten and elementary school close by, convenient to the German School.

The interior includes living room with a fully fitted open kitchen and access to the terrace, two bedrooms - one is walk-through, shower bathroom with toilet, walk-in closet / storage room, and entry hall.

Laminated floating floors and tiles, security entry door, gas boiler, washer / dryer, dishwasher, microwave oven, LCD TV, dishes and kitchenware, bedding, towels, iron, vacuum cleaner, alarm, satellite reception, shared storage room in the building. Possibility to rent one parking space in front of the house on the plot for CZK 1,000/month. Common building charges and deposit for utilities CZK 4,700/month incl. the Internet.



* Area of the unit according to the Civil Code. The area consists of the sum total area of the entire unit bounded by perimeter walls.

Apartment Two-bedroom (3+kk)

Rented

56 m², Prague 5, Košíře, Průchova

