

Apartment Four-bedroom (5+kk)

Ask for price

169 m², Prague 2, Vinohrady, Slezská



Apartment Four-bedroom (5+kk)

Ask for price

169 m², Prague 2, Vinohrady, Slezská

Total area	187 m ²
Floor area*	169 m ²
Terrace	18 m ²
Parking	-
Cellar	Yes
PENB	G
Reference number	26164

Newly emerging split-level attic flat with a terrace, set on the 6th and 7th floors of a residential building with an elevator, situated directly opposite sady Svatopluka Čecha park. Attractive residential area, just a 3 minutes' walk from the metro and tram stops at Jiřího z Poděbrad square.

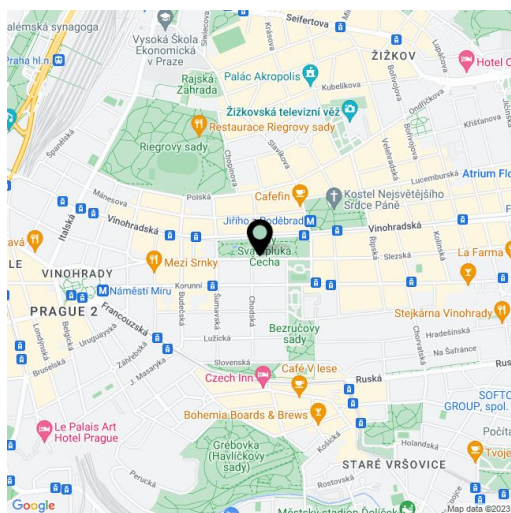
Construction is scheduled for Q4 2017 - Q3 2018.

The lower floor will consist of 4 bedrooms, 2 bathrooms (one w/ shower, toilet & two sinks, one w/ bathtub & sink), en-suite walk-in closet, utility room, and an entry hall. The layout of the upper floor will offer a generous living room (64,1 m²) with kitchen and dining area with access to the **spacious terrace**, and a separate toilet with sink.

The standard equipment of the apartment will include Quick Parquet two-layer oak floors, Impronta Italgraniti large format tiles, Schuco aluminum sliding glass walls and skylights with triple-glazing, Dextura **interior doors with concealed hinges**, NEXT entrance door of the highest security level, Baxi gas boiler, quality bathroom fixtures (e.g. Duravit), fittings Axor, audio entry phone, preparation for air-conditioning, white plasters, suspended plasterboard ceilings. The purchase price includes a **large cellar and a share in a large landscaped garden**. There is also a possibility to rent a garage (50 m).

Popular residential area within easy reach of downtown and within walking distance of Riegrový sady park. Full civic amenities in the area.

Interior 168,8 m², terrace 17,6 m².



* Area of the unit according to the Civil Code. The area consists of the sum total area of the entire unit bounded by perimeter walls.

Apartment Four-bedroom (5+kk)

Ask for price

169 m², Prague 2, Vinohrady, Slezská

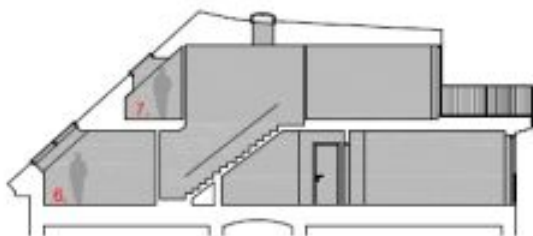
6. NP / 6TH FLOOR



7. NP / 7TH FLOOR



ŘEZ / SECTION



LEGENDA / LEGEND

01	CHODBA / CORRIDOR	13,00 m ²
02	PRACOVNA / WORKROOM	15,40 m ²
03	LOŽNICE / BEDROOM	14,00 m ²
04	ŠATNA / CLOACKROOM	08,20 m ²
05	KOUPELNA / BATHROOM	05,90 m ²
06	ŠATNA / CLOACKROOM	02,00 m ²
07	CHODBA / CORRIDOR	03,90 m ²
08	KOUPELNA / BATHROOM	04,60 m ²
09	LOŽNICE / BEDROOM	14,20 m ²
10	LOŽNICE / BEDROOM	12,50 m ²
11	SCHODIŠTĚ / STAIRCASE	04,50 m ²
12	OBÝVACÍ POKOJ / LIVING ROOM	64,10 m ²
13	WC / WC	02,60 m ²
14	TERASA / TERRACE	17,60 m ²
Σ	UŽITNÁ PLOCHA / USABLE AREA	164,90 m ²
Σ	PODLAHOVÁ PLOCHA / FLOOR AREA*	168,80 m ²
Σ	TERASA / TERRACE	17,60 m ²