

## Apartment One-bedroom (2+kk)

Rented

54 m<sup>2</sup>, Prague 4, Modřany, K Vystrkovu



# Apartment One-bedroom (2+kk)

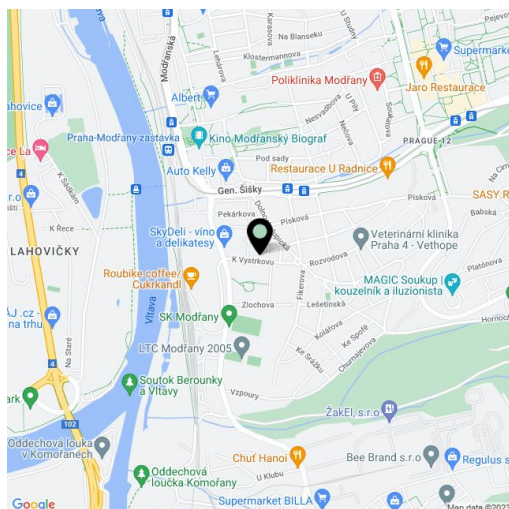
**Rented**54 m<sup>2</sup>, Prague 4, Modřany, K Vystrkovu

Total area	58 m <sup>2</sup>
Floor area*	54 m <sup>2</sup>
Balcony	4 m <sup>2</sup>
Parking	Garage parking.
Garage	Yes
Cellar	Yes
PENB	B
Reference number	26105
Available from	Immediately

**Brand new 1-bedroom flat with a balcony situated on the first floor with lift in a new residential project Staromodřanská Residence with underground parking. Located in a quiet green residential neighborhood in Prague 4 near the Vltava riverbank, with quick access to the city center, good amenities and wide range of sports and relaxation opportunities. Convenient to the BISP international school.**

The interior features living room with a fully fitted open kitchen and balcony facing the courtyard greenery, one bedroom with built-in wardrobes, bathroom with bathtub and toilet, and entrance hall with built-in wardrobes.

Laminated floors, lots of storage, dishwasher, video entry phone, basement storage unit. One garage parking space available at CZK 1000/month. Deposit for common building charges, water and heating around CZK 2600/month. Electricity is billed separately.



\* Area of the unit according to the Civil Code. The area consists of the sum total area of the entire unit bounded by perimeter walls.

# Apartment One-bedroom (2+kk)

Rented

54 m<sup>2</sup>, Prague 4, Modřany, K Vystrkovu

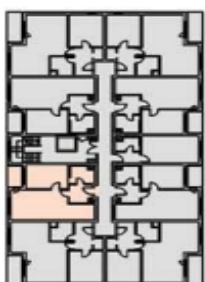
BYT č. 207, 2NP, budova O3



Situace / map

Č.M. / No	Nazev místnosti / Room	m <sup>2</sup> /sqm
207/01	HLA	5,4
207/02	KOUPELNA	5,9
207/03	OBYVACÍ POKOJ + KK	28,8
207/04	KOCHICE	13,4
CELKOVÁ ČISTÁ PLOCHA BYTU		53,3
207/05	SKLON	4,2
CELKOVÁ PLOCHA		57,5

Celkový půdorys / total layout:



Developer:

**LINKIN**  
invest

