

House Seven-bedroom (8+1)

Rented

550 m², Prague 4, Podolí, Vápencová



House Seven-bedroom (8+1)

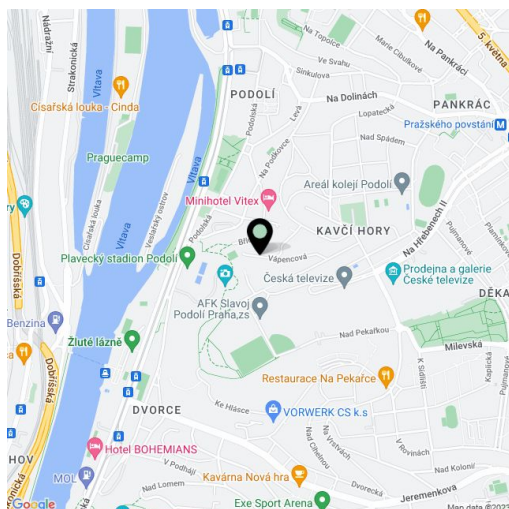
Rented550 m², Prague 4, Podolí, Vápencová

Plot	1 617 m ²
Foot print	220 m ²
Garden	1 397 m ²
Parking	Garage and parking on the plot.
Garage	Yes
Cellar	Yes
PENB	D
Reference number	26061
Available from	Immediately

Comfortable 5-6-bedroom 3-bathroom 1920s villa with an outdoor covered pool and preserved original details, set in a slope in a quiet street on the edge of Kavčí hory Park in the immediate vicinity of the Czech TV grounds. Sought after residential neighborhood with quick access to the city center and full amenities within easy reach, just a short walk from Pražského povstání metro station, and convenient to Prague 4 international schools.

Ground floor: living room with a fireplace and terrace access, walk-through library, guest bedroom with a balcony / dining room, kitchen, walk-in closet, toilet, hall, spacious entrance hall. First floor: one bedroom with a walk-in closet, one bedroom with a balcony, eat-in kitchen, bathroom (bathtub, bidet, toilet), utility room. Second floor: two attic bedrooms with storage, shower bathroom, toilet. Garden level: separate unit with a private entrance - two spacious rooms, fireplace, terrace access, kitchenette, bathroom (shower, toilet), storage room, utility area, storage.

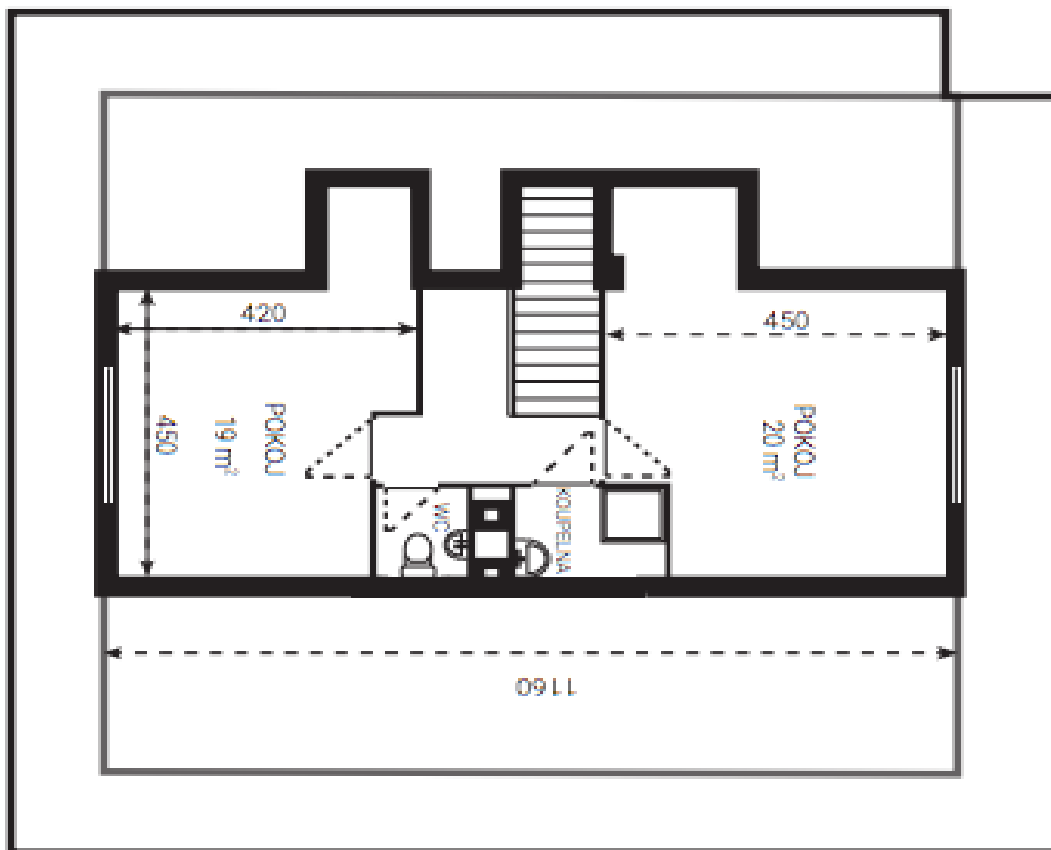
Covered swimming pool, hardwood and laminated floors, built-in wardrobes, wooden manual and automatic outdoor blinds, dishwasher, gas boiler, alarm connected to a security agency, camera system. Garage plus two or three parking spots on the plot. Utilities around CZK 15000 per month.



House Seven-bedroom (8+1)

Rented

550 m², Prague 4, Podolí, Vápencová



- 2 pokoje
- Koupelna
- W.C

Podkrovi 52 m²

House Seven-bedroom (8+1)

Rented

550 m², Prague 4, Podolí, Vápencová



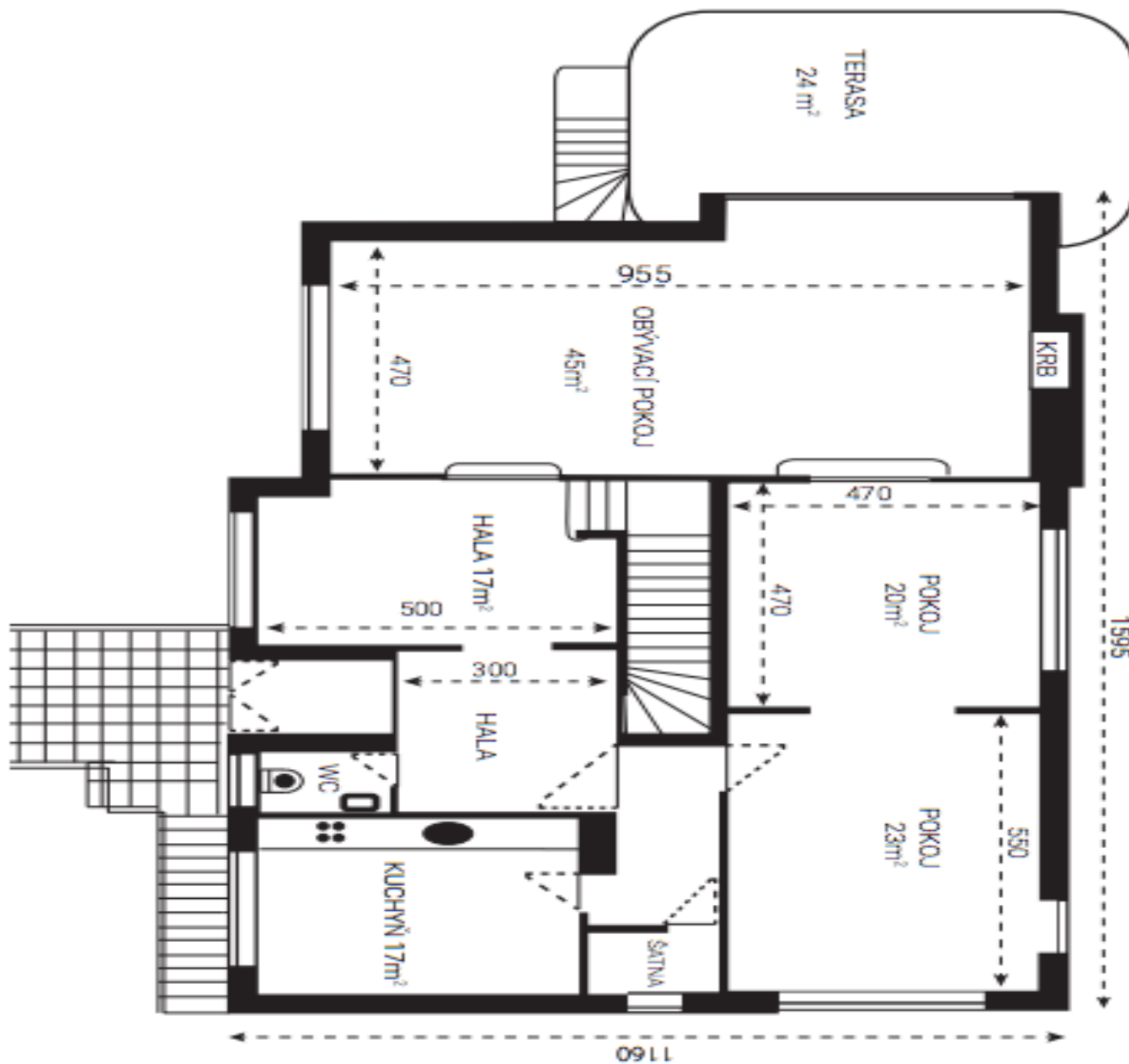
Suterén 190 m²

- 3 místnosti, jedna s krbem
- Kuchyň
- Koupelna se sprchovým koutkem a WC
- Terasa
- Garáž
- 5x komora

House Seven-bedroom (8+1)

Rented

550 m², Prague 4, Podolí, Vápencová



Přízemí 185 m²

Rozměry podlaží jsou uvedeny včetně zdí a příček

- Obývací pokoj s velkým krbem
- Pokoj
- Pokoj
- Kuchyně
- 2 haly
- Komora
- WC
- Terasa

House Seven-bedroom (8+1)

Rented

550 m², Prague 4, Podolí, Vápencová

