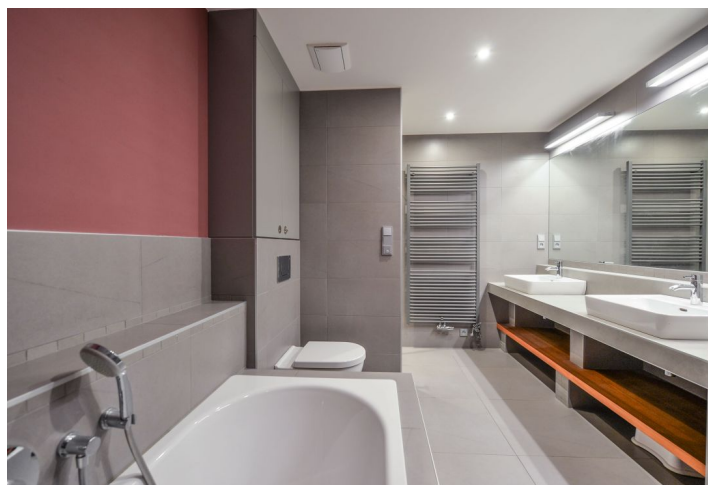




Apartment Four-bedroom (5+kk)

Rented

115 m², Prague 6, Břevnov, Nad Závěrkou





Apartment Four-bedroom (5+kk)

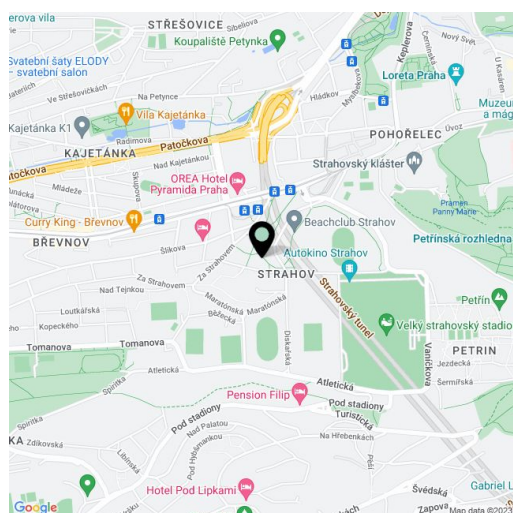
Rented115 m², Prague 6, Břevnov, Nad Závěrkou

Total area	133 m ²
Floor area*	115 m ²
Terrace	18 m ²
Garden	250 m ²
Parking	Two garage parking spaces.
Garage	Yes
Cellar	Yes
PENB	B
Reference number	26044
Available from	Immediately

Benefiting from a private garden and green views, this quiet partly furnished upper ground floor 4-bedroom 2-bathroom split-level flat is situated in one of the most attractive residential areas of Prague 6, Břevnov. The modern gated residential building with lift and garage parking is situated near a green park. Popular location in close vicinity of the Prague Castle (just a 15 minute walk) and Ladronka Park. Quick access to the city center, full amenities within walking distance, convenient to the airport and international schools in Prague 6 and 5.

The lower level includes living room with a fully fitted open kitchen and access to the terrace and garden, guest bedroom / study with a walk-in closet, shower bathroom, toilet, and entrance hall with built-in storage. The upper floor features three more bedrooms - one with a terrace, a fitted walk-in closet and second bathroom (bathtub, walk-in shower, double sink, toilet).

Hardwood floors, tiles, security entry door, recessed lighting, outdoor electric blinds, blackout drapes in the bedrooms, terrace awning, heat pump, washer, induction cooktop, dishwasher, chip entry, camera system and pram storage in the building. Two garage parking spaces included. Common building charges and deposit for utilities CZK 8000 per month. Available from September 2018.



* Area of the unit according to the Civil Code. The area consists of the sum total area of the entire unit bounded by perimeter walls.