

## House Seven-bedroom (8+kk)

Sold

250 m<sup>2</sup>, Prague 5, Motol



## House Seven-bedroom (8+kk)

**Sold**250 m<sup>2</sup>, Prague 5, Motol

Plot	936 m <sup>2</sup>
Foot print	272 m <sup>2</sup>
Garden	664 m <sup>2</sup>
Parking	Double garage
Garage	Yes
Cellar	Yes
PENB	G
Reference number	25806

**Half of a semidetached house after a partial reconstruction, with a large, nicely landscaped garden with greenery. The house is located in Motol, in a complex of traditional family houses, within walking distance of a metro station, tram stop, natural swimming pool and Cibulka Park.**

The ground floor, which is in a pre-reconstruction state (cleared, painted), includes a total of 4 rooms. On the first floor, which has undergone a complete renovation in 2007, there is a living room with a fully equipped kitchen, bedroom, bathroom and walk-in closet. On the top floor there are two bedrooms and a bathroom, the rest of the attic is not used yet. The house has a basement.

The renovated part of the building includes **solid wooden parquets**, large floor tiles, new wooden euro-windows and Velux skylights, suspended ceilings with spot lighting, gas boiler. There is a separate **garage for 2 cars**. The garden, complete with ornamental greenery, offers plenty of privacy and space to relax. An undeniable advantage is also the **possibility of dividing the land and building another house on a separate plot**.

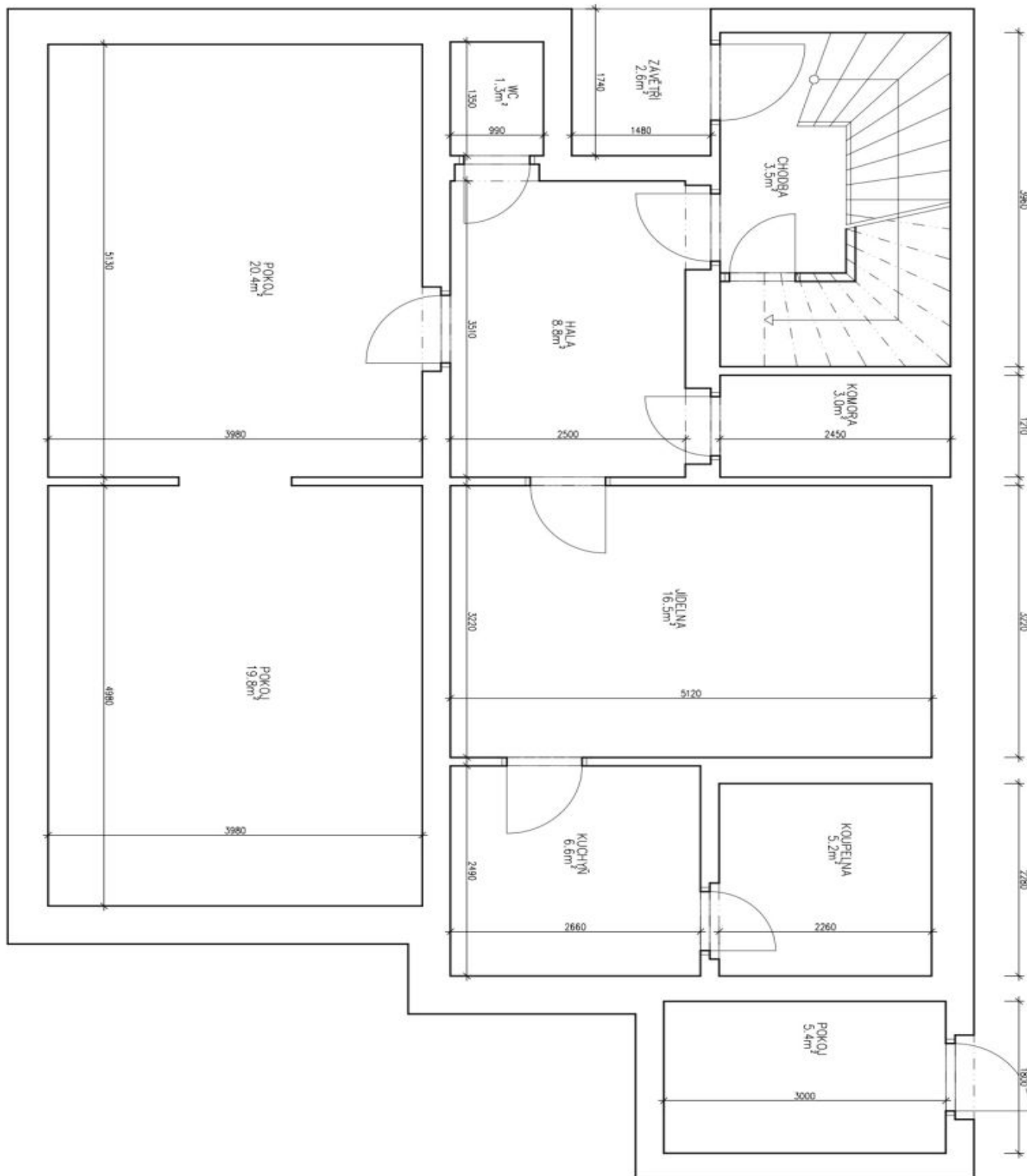
Nearby you can find several kindergartens and playgrounds, an elementary school, Motol University Hospital, Greyhound sports and entertainment area with a go-kart track, minigolf, tennis courts and Cibulka Park. Good access to the center thanks to a direct tram connection - 10 minutes to Andel and 15 minutes to Národní třída metro stations.

Usable area incl. cellar about 250 m<sup>2</sup>, separate garage 46 m<sup>2</sup>, built-up area 272 m<sup>2</sup>, garden 664 m<sup>2</sup>, land 936 m<sup>2</sup>.

# House Seven-bedroom (8+kk)

**Sold**

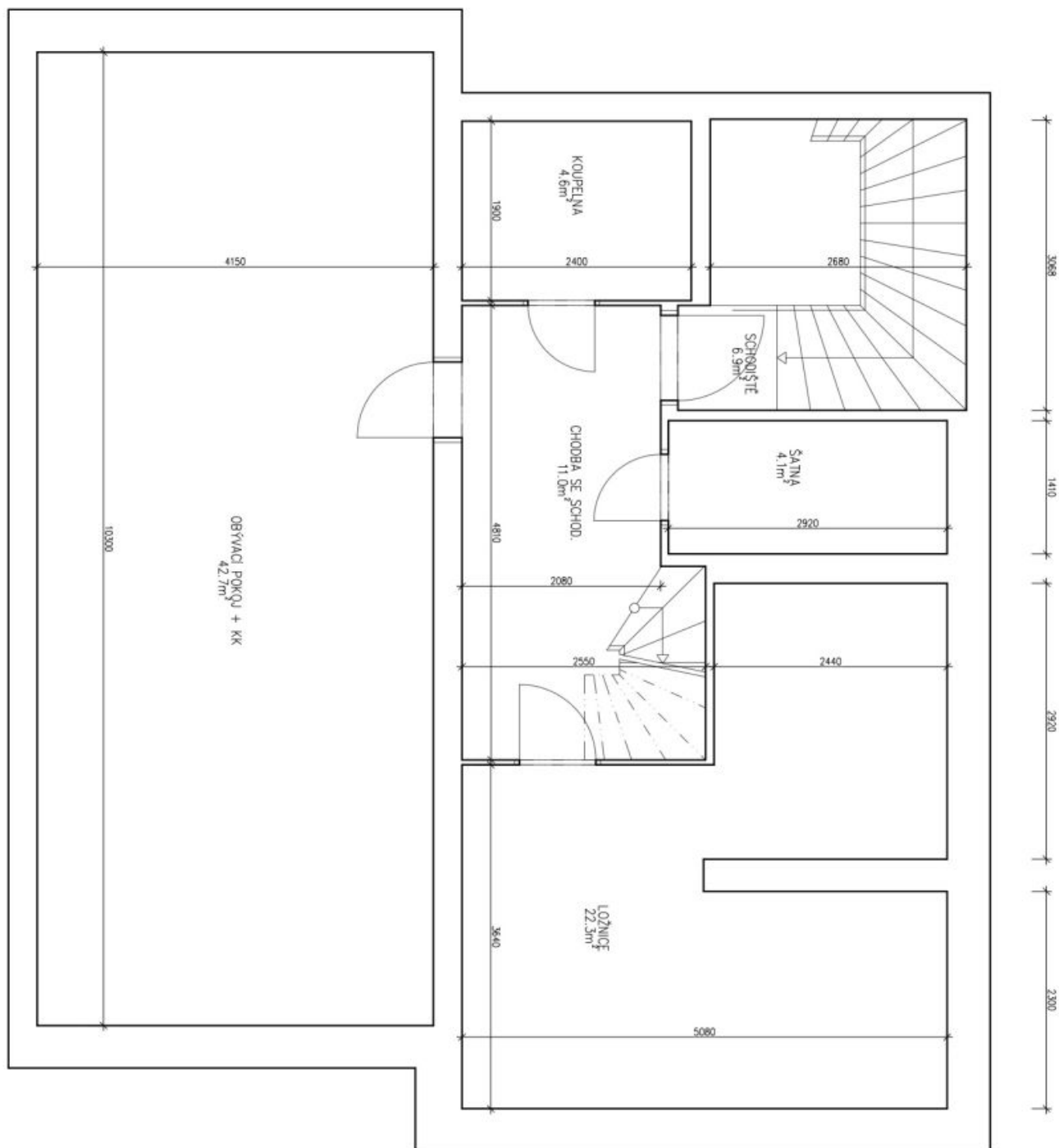
250 m<sup>2</sup>, Prague 5, Motol



# House Seven-bedroom (8+kk)

250 m<sup>2</sup>, Prague 5, Motol

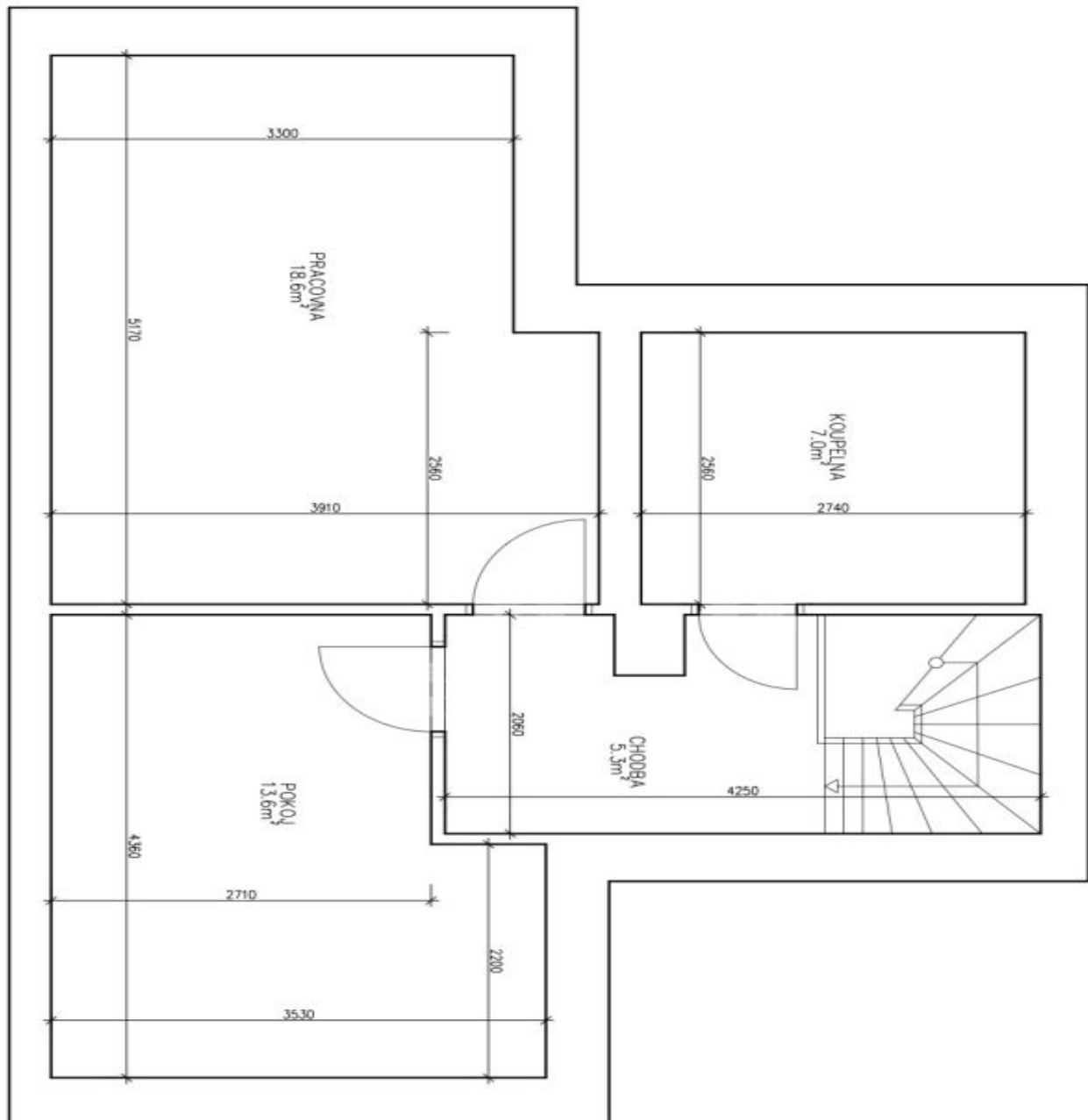
**Sold**



# House Seven-bedroom (8+kk)

Sold

250 m<sup>2</sup>, Prague 5, Motol



## House Seven-bedroom (8+kk)

Sold

250 m<sup>2</sup>, Prague 5, Motol

