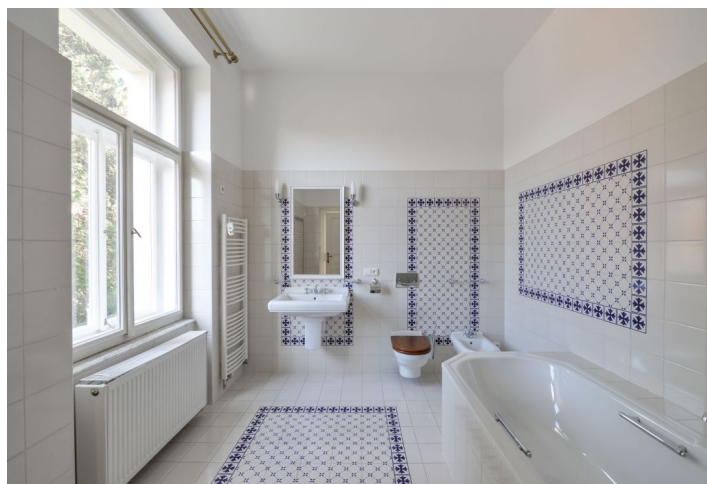


House Seven-bedroom (8+1)

Ask for price

827 m², Prague 6, Vokovice, Ke dvoru



House Seven-bedroom (8+1)

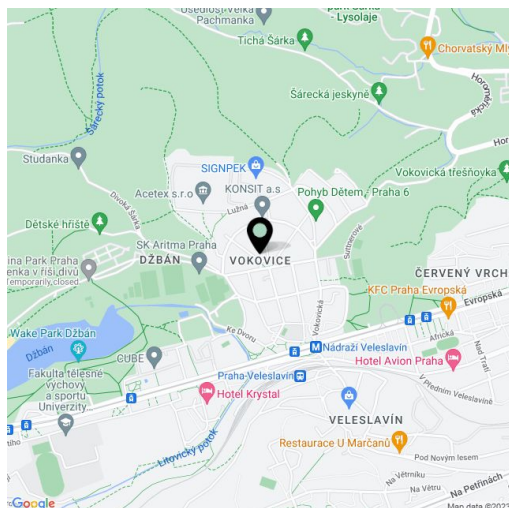
[Ask for price](#)827 m², Prague 6, Vokovice, Ke dvoru

Plot	8 222 m ²
Foot print	308 m ²
Garden	7 914 m ²
Parking	Parking available.
Cellar	Yes
PENB	G
Reference number	25677
Available from	Immediately

Boasting an indoor pool, sauna, tennis court and a mature garden, this is a unique 1902 villa, part of the Vokovický dvůr grounds (Vokovice Court) originally from the 15th century. This partly furnished fully renovated 7-bedroom 5-bathroom villa is located in a quiet green neighborhood in close vicinity of the Divoká Šárka natural preserve. Quick access to the city center (a few min. walk from Nádraží Vevešlavín metro station) and the airport, convenient to international schools, with full amenities within easy reach.

The ground floor features living room, winter garden, study, fully fitted eat-in kitchen with terrace access, hall, utility room, walk-in closet and bathroom. The first floor offers three bedrooms, two bathrooms, fitted kitchen, walk-in closet, terrace and a small winter garden. The second floor includes three attic bedrooms, kitchenette, hall and two bathrooms. There is a basement floor featuring the pool, sauna, bathroom, laundry room, utility area, fitness room, hobby room, wine cellar, storage and garden access.

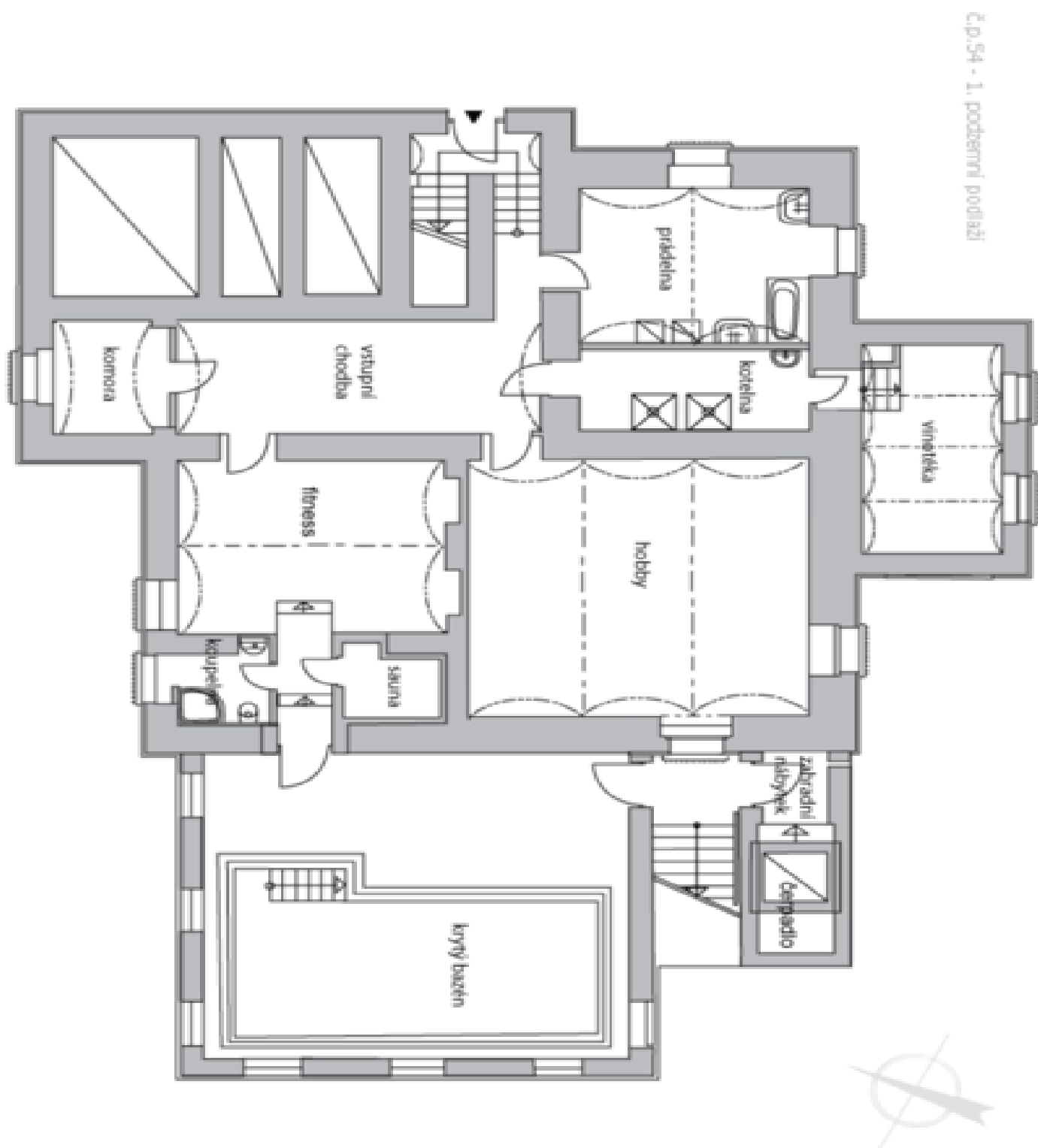
Preserved original details, high ceilings, solid wood parquet floors, tiles, wooden paneling and shutters, stucco ornaments, three original ceramic stoves, storage, gas boilers, video entry phone, alarm, satellite reception. Utilities around CZK 20,000 per month. Electricity is billed separately (transfer to the tenant). Can be rented unfurnished.



House Seven-bedroom (8+1)

Ask for price

827 m², Prague 6, Vokovice, Ke dvoru



House Seven-bedroom (8+1)

Ask for price

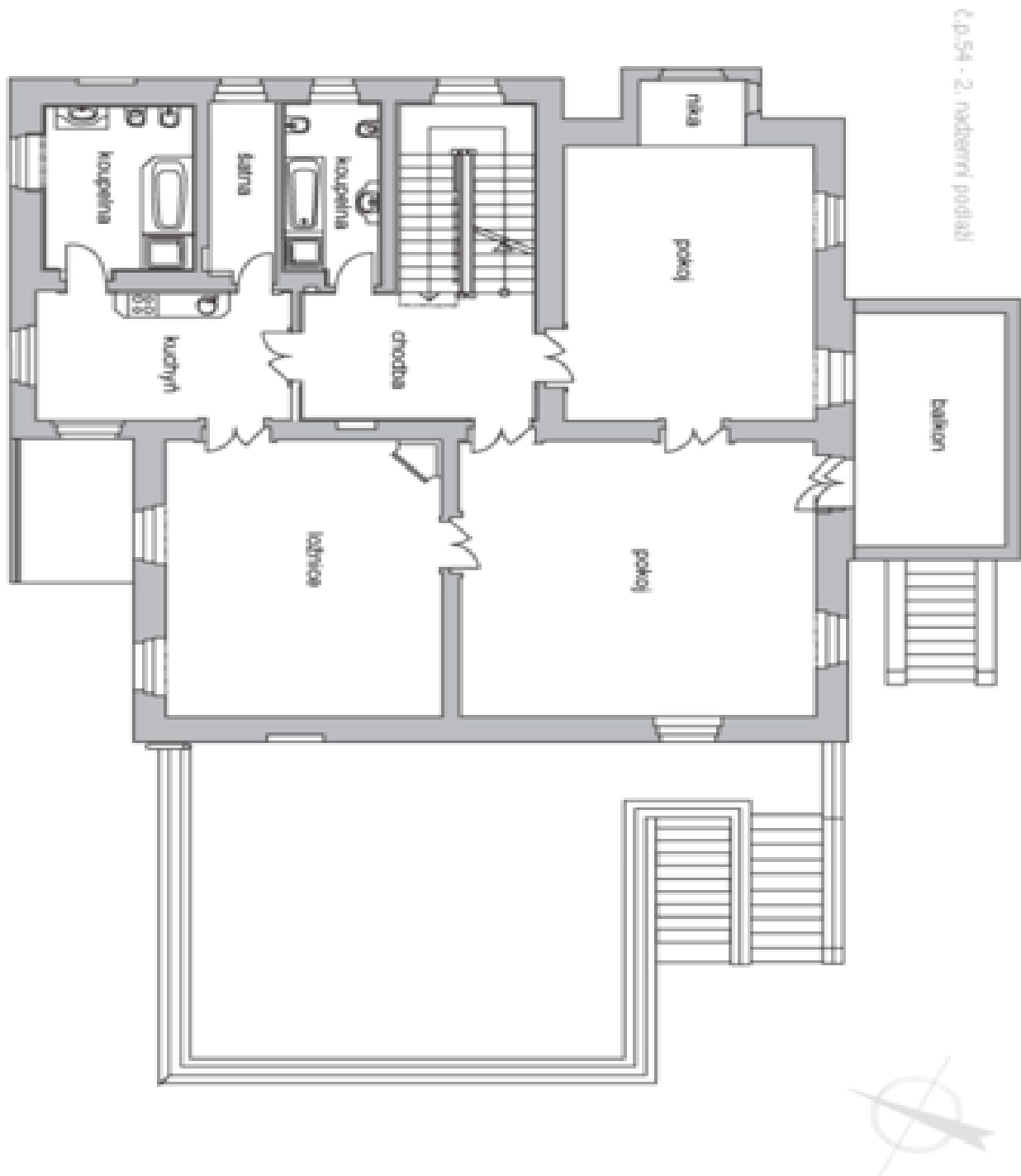
827 m², Prague 6, Vokovice, Ke dvoru



House Seven-bedroom (8+1)

827 m², Prague 6, Vokovice, Ke dvoru

Ask for price



House Seven-bedroom (8+1)

Ask for price

827 m², Prague 6, Vokovice, Ke dvoru

