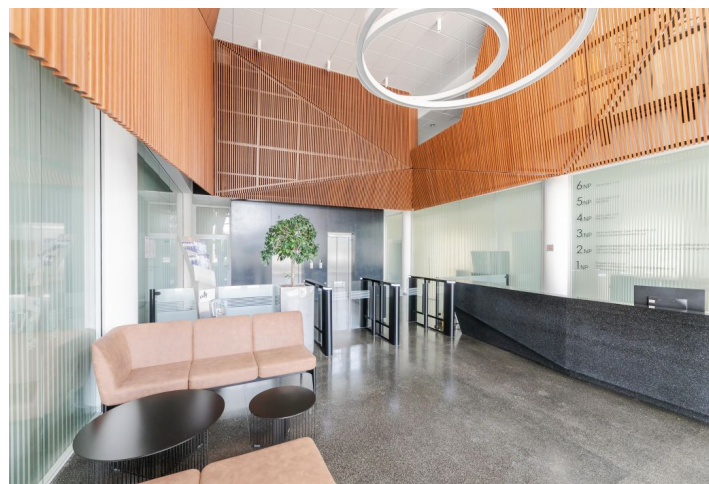


Office space

Rented

Prague 4, Michle, Jemnická



Office space

Rented

Prague 4, Michle, Jemnická

Service price	198 CZK monthly per m ²
Available area	615 m ²
Cellar	-
Parking	EUR 110 / ps / month
PENB	G
Reference number	25668

Office space for lease on the 3rd floor in a modern administrative building situated in Prague 4.

Location:

Very good accessibility by car and public transport – the Budějovická and Kačerov metro stations (line C) are just 2 minutes by bus or 8 minutes on foot. A shuttle bus connects the building with the Budějovická metro station. Easy access to Prague's Ring Road and to the D1 highway leading to Brno.

Features and services:

Central reception
 24/7 security service
 24/7 access
 Green rooftop terrace for tenants
 Openable windows with external sunblinds
 Air-conditioning
 Raised floors
 Kitchenette and toilets on each floor
 Warehouse space
 Underground parking
 Wide selection of services available in BB Centrum

Photos may not represent the actual condition of the premises.

Rental and service charges listed without VAT. Lessee pays no commission.

