

House Five-bedroom (6+kk)

Sold

192 m², Prague 6, Nebušice



House Five-bedroom (6+kk)

Sold192 m², Prague 6, Nebušice

Total area	192 m ²
Plot	560 m ²
Foot print	188 m ²
Garden	372 m ²
Floor area	189 m ²
Balcony	3 m ²
Parking	Garage for 2 cars
Garage	Yes
Cellar	-
PENB	D
Reference number	25620

Well-equipped, fully furnished villa after a complete reconstruction is a part of a residential complex in the beautiful surroundings of Nebušice, Prague 6, directly adjacent to the lovely nature area of Šárecké Valley. Pleasant and peaceful location offers nice family living with a good environment for children, excellent access to the city center and the prestigious International School of Prague within walking distance.

The ground floor of this 5-bedroom villa consists of an entrance hall, spacious living room and dining room with access to the garden, kitchen, utility room accessible both from garage and garden, and a separate toilet. The second floor consists of three bedrooms (including the master bedroom with a private bathroom and walk-in wardrobe), a study, 2 additional bathrooms, and a separate toilet. There is a **garage for two cars**.

High standard of equipment and furnishings includes **air-conditioning** in two bedrooms, wooden interior doors and windows, oak parquet floors, **Italian and Spanish ceramic tiles**, polyamide carpets, fully equipped ALNO kitchen, built-in wardrobes, security system with connection to ARC, and a gas boiler.

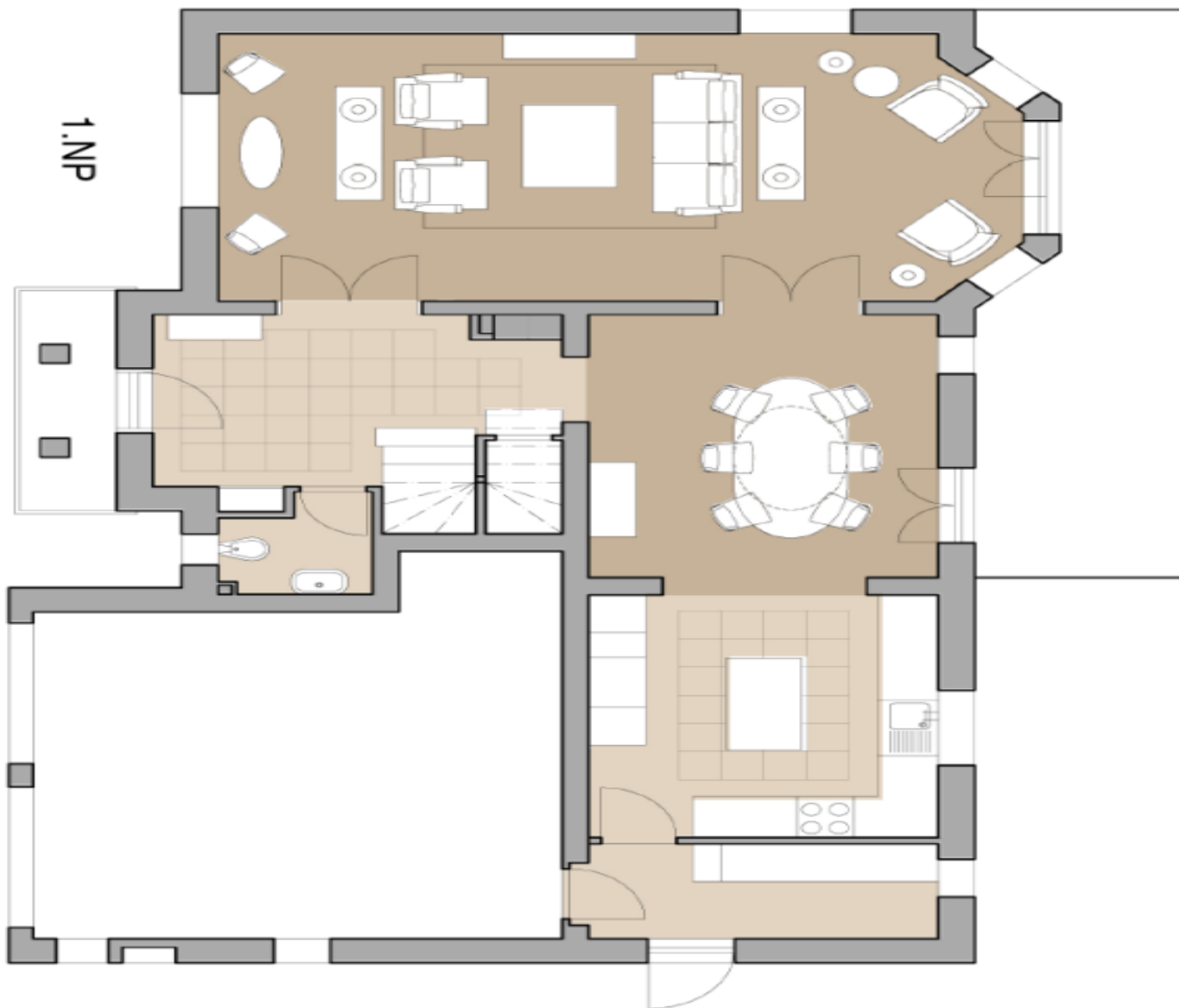
The house is located on the edge of Nebušice, near a playground and the above-mentioned **International School of Prague**. Within a few minutes by foot or by the bus, there is a primary school, music school, solarium, tennis court, bowling alley, supermarket, several restaurants, and a post office. Direct public transport links to the Bořislavka metro station.

Interior 189 m², built-up area 188 m², garden 372 m², plot 560 m².

House Five-bedroom (6+kk)

Sold

192 m², Prague 6, Nebužice



House Five-bedroom (6+kk)

Sold

192 m², Prague 6, Nebušice

