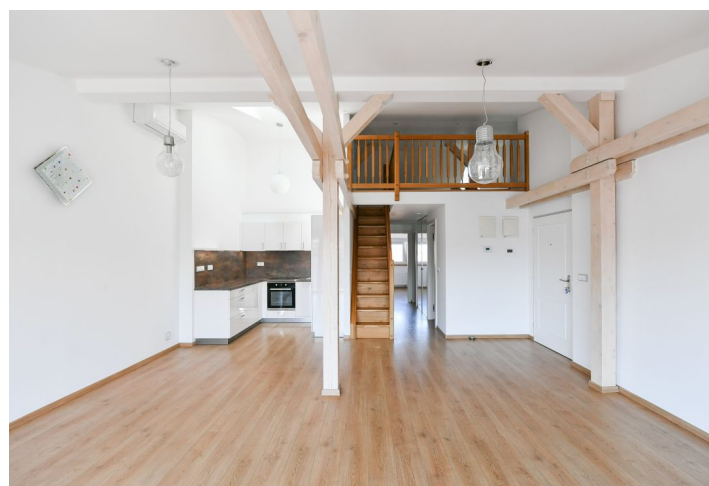
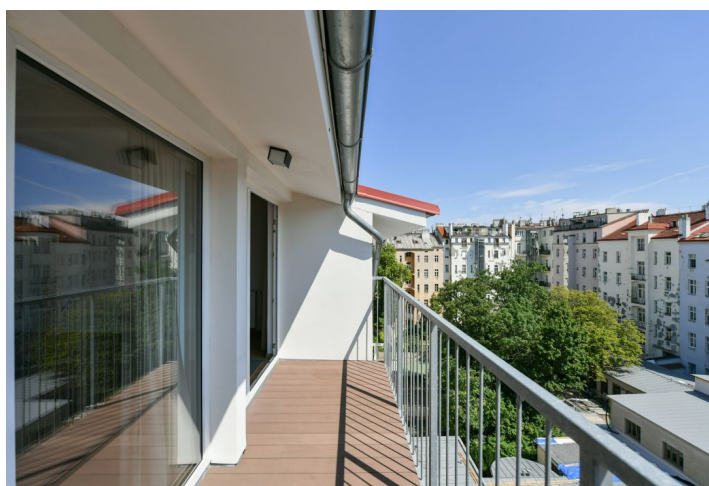


Apartment Two-bedroom (3+kk)

Rented

85 m², Prague 2, Vinohrady, Slezská



Apartment Two-bedroom (3+kk)

Rented

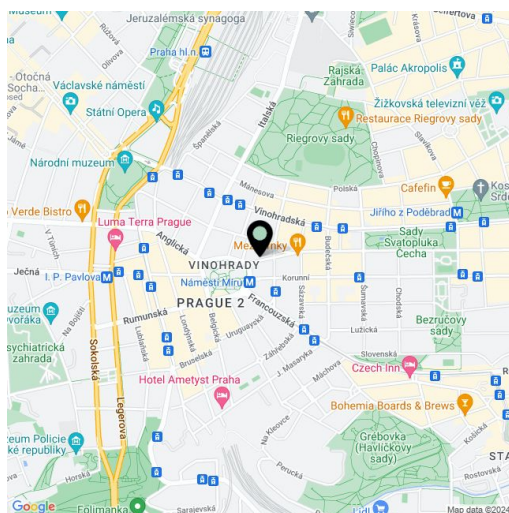
85 m², Prague 2, Vinohrady, Slezská

Total area	90 m ²
Floor area*	85 m ²
Balcony	5 m ²
Parking	-
Cellar	-
Service price	Common building charges CZK 800/person/month. Utilities are billed separately.
PENB	G
Reference number	25603
Available from	01.08.2025

Recently built attic apartment with a balcony and a spacious gallery, on the fifth top floor of a completely reconstructed building with an elevator. Nicely located in the Vinohrady residential neighborhood popular with the expat community, just minutes to the metro and trams on Peace and Jiřího z Poděbrad squares. Quick access to the city center, full amenities in the area incl. shopping, restaurants, cafes, and bars.

The interior includes a spacious living room with a fully fitted open plan kitchen and balcony access, two separate bedrooms, two bathrooms (bathtub/walk-in shower, toilet), and an open entry hall. There is a large open gallery (height approx. 1.5 m) suitable as a playroom, guest bedroom, or storage.

French windows, **air-condition**, laminate and tile floors, security entry door, built-in wardrobes, gas boiler, washer, dishwasher.

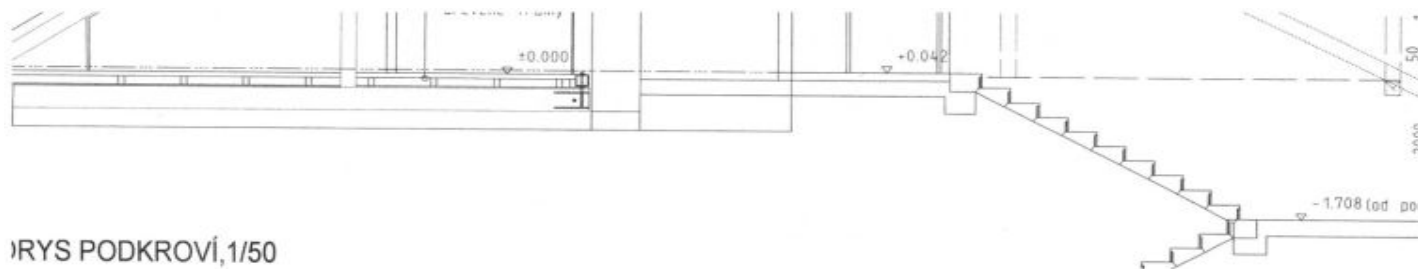


* Area of the unit according to the Civil Code. The area consists of the sum total area of the entire unit bounded by perimeter walls.

Apartment Two-bedroom (3+kk)

Rented

85 m², Prague 2, Vinohrady, Slezská



RYŠ PODKROVÍ, 1/50

