

House Five-bedroom (6+1)

Sold

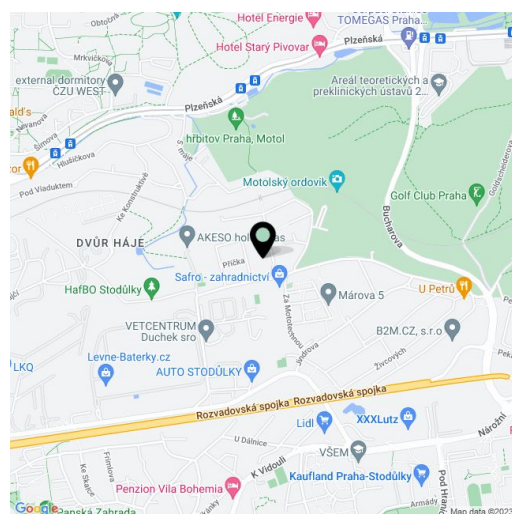
566 m², Prague 5, Stodůlky, V Borovičkách



House Five-bedroom (6+1)

Sold566 m², Prague 5, Stodůlky, V Borovičkách

Total area	566 m ²
Plot	1 089 m ²
Foot print	170 m ²
Garden	919 m ²
Floor area	524 m ²
Balcony	14 m ²
Terrace	28 m ²
Parking	3 garage parking spaces + 2 parking spaces on the plot
Cellar	Yes
PENB	G
Reference number	25546



This family house with 3 housing units and a landscaped garden with mature trees and a water well is situated in a quiet part of Stodulky next to the Košíře Motol Nature Park. There are 3 parking spaces, a swimming pool, and a Finnish sauna. Ideal housing for both individuals and families with children.

In the basement, there is a living room, a bathroom with a toilet, the utility equipment of the house, a cellar, and a separate garage for 3 cars. On the plot, it is possible to park another 2 cars with the option of constructing a carport.

On the ground floor, where there is also the main entrance to the house, there is an entrance hall, a laundry room, a bathroom, a guest toilet, a bedroom, and a living room with a kitchen and access to the terrace. There is also a **swimming pool and a Finnish sauna**. In 2016, a new pool engine room and a saltwater preparation plant were built for the even greater comfort of the villa's residents. The layout of this floor is 2-bedroom.

On the 1st floor, there is also a **2-bedroom apartment** consisting of 2 bedrooms, a living room with built-in wardrobes, a hall with access to a south-facing terrace, and a west-facing balcony.

The 2nd floor is designed as an attic with airy ceilings and bright interiors. The **2-bedroom** layout consists of a hall, a bathroom, a guest toilet, and a terrace.

The facilities include **oak paneling and wooden laminate parquet floors, white plastic windows and Velux wooden windows**. The house is heated by a **Junkers** gas boiler; the bathrooms have **electric mats**. The chimney was recently re-lined. The house was completely renovated in 2011.

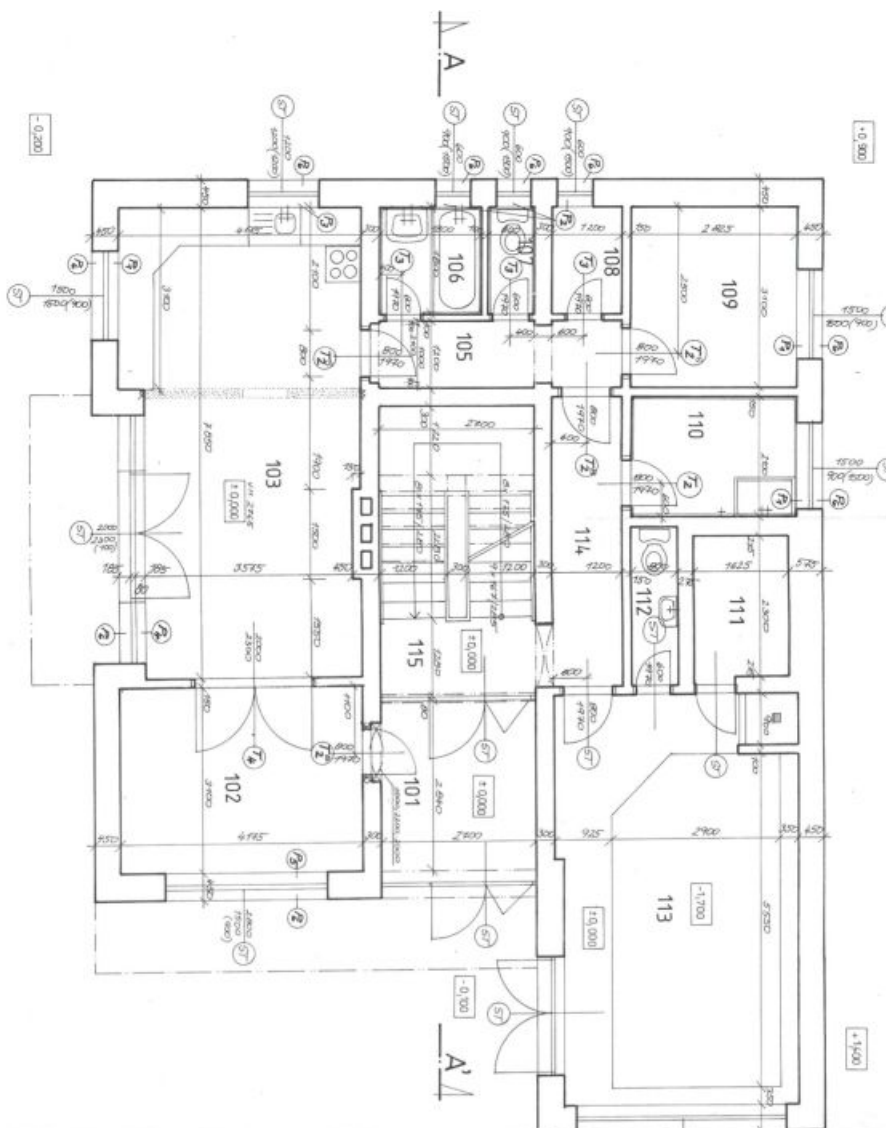
A calm location that offers many opportunities for walks and other sports activities. Nearby, there is a **golf center and tennis courts, the Motol outdoor swimming pool, and the Kosire Motol Nature Park**. There are also good civic amenities, including several large supermarkets, a hospital, kindergartens, and many elementary schools. About 100 meters from the house there is a bus stop, which is connected to the A and B lines of the metro (the Nemocnice Motol metro station can be reached in 7 minutes, the Nové Butovice metro station in 10 minutes), the ride to the city center takes half an hour. The proximity of the Rozvadov motorway makes traveling by car very easy.

Useable area about 524 m², terrace 28.49 m², balcony 6.95 m², built-up area 170 m², garden 919 m², plot 1,089 m².

House Five-bedroom (6+1)

Sold

566 m², Prague 5, Stodůlky, V Borovičkách



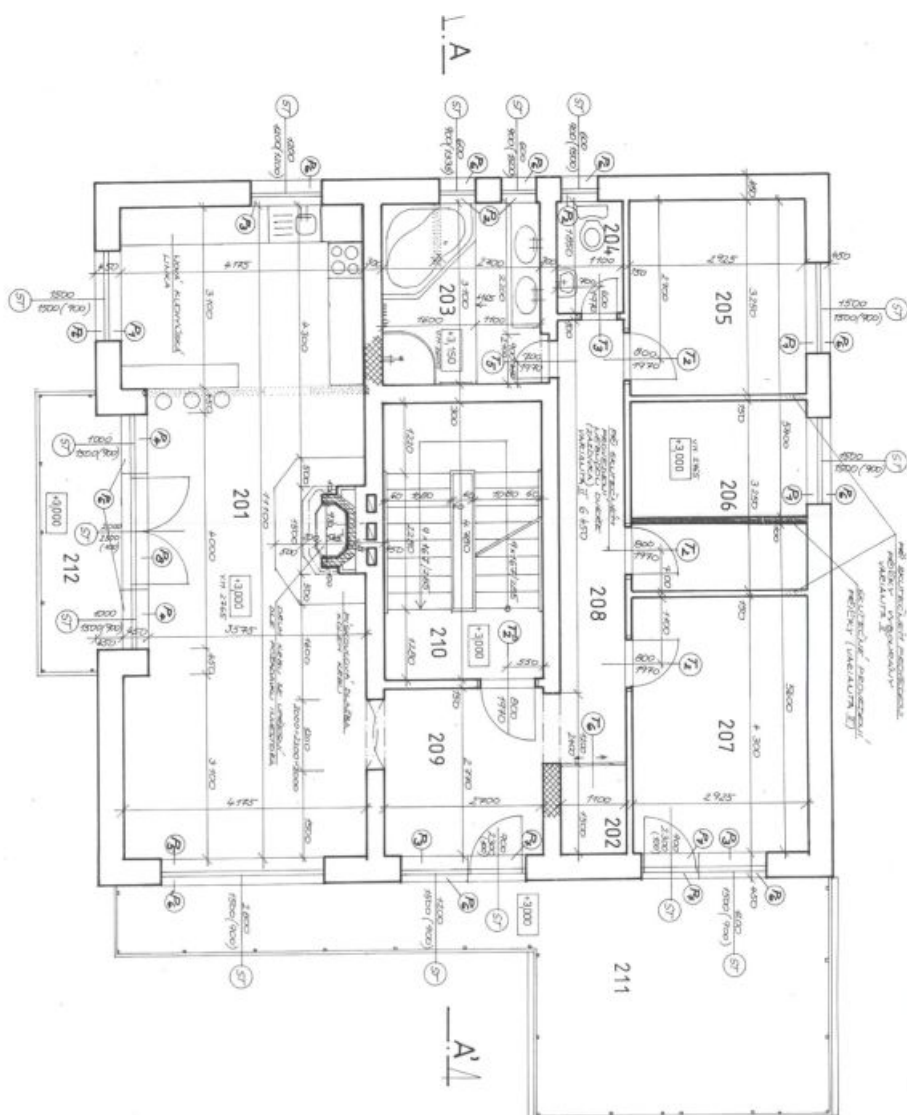
VÝPIS MÍSTNOSTÍ

ČÍSLO MÍSTNOSTI	DRUH MÍSTNOSTI	ROZSAH m ²	PODLAHA	STĚNA A STŘEŠÍ	POKRYTÍ
101	VSTUP	0,17	1. NP	—	—
102	PRACOVNA	0,09	1. NP	—	—
103	OBÝVAČÍ PROSTOR s kuchyní a jídelnou	30,14	1. NP	—	—
105	LOUŽKA	1,48	1. NP	—	—
106	KUCHYNĚ	3,24	1. NP	—	—
107	WC	1,44	1. NP	—	—
108	LOUŽKA	2,16	1. NP	—	—
109	LOUŽKA	0,16	1. NP	—	—
110	LOUŽKA	0,16	1. NP	—	—
111	LOUŽKA	3,24	1. NP	—	—
112	WC	2,16	1. NP	—	—
113	TERASA	28,70	1. NP	—	—
114	LOUŽKA	0,16	1. NP	—	—
115	LOUŽKA	12,23	1. NP	—	—

House Five-bedroom (6+1)

566 m², Prague 5, Stodůlky, V Borovičkách

Sold



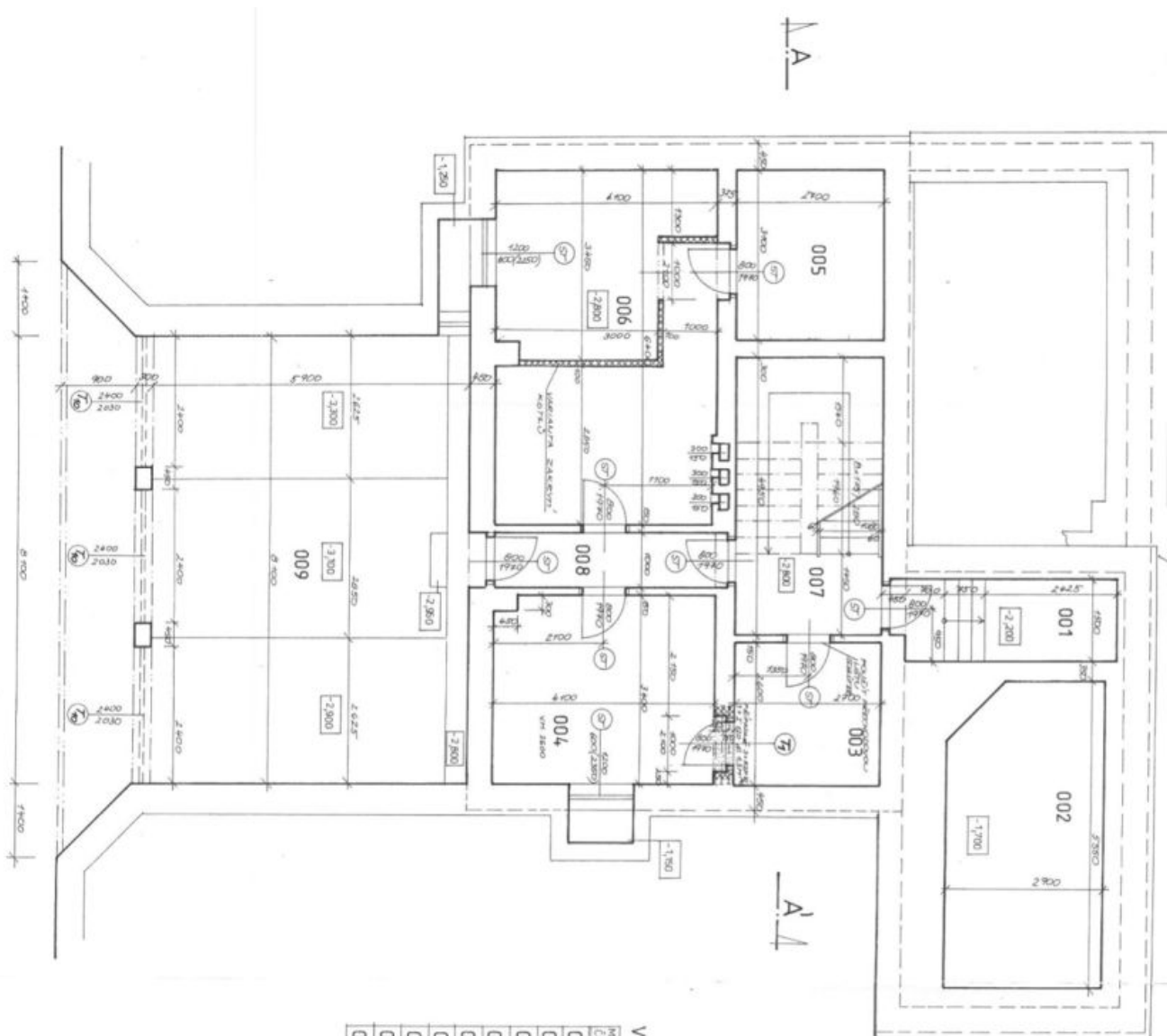
VÝPIS MÍSTNOSTÍ

ČÍSLO MÍSTNOSTI	DEJIN MÍSTNOSTI	PLŮCNA M ²	PODLAHA	ÚPRAVA	PODMĚRY
201	OBYTNÍ MÍSTNOST	14,294	1. POKLAD	STĚNA A STŘEŠNÍ	11,10 x 12,85
202	OBYTNÍ MÍSTNOST	11,665	1. POKLAD	STĚNA A STŘEŠNÍ	11,10 x 10,50
203	KUCHYŇKA	8,187	1. POKLAD	STĚNA A STŘEŠNÍ	11,10 x 7,38
204	KU	2,104	1. POKLAD	STĚNA A STŘEŠNÍ	11,10 x 1,90
205	LOŽNICE	9,151	1. POKLAD	STĚNA A STŘEŠNÍ	11,10 x 8,24
206	LOŽNICE	9,151	1. POKLAD	STĚNA A STŘEŠNÍ	11,10 x 8,24
207	LOŽNICE	12,998	1. POKLAD	STĚNA A STŘEŠNÍ	11,10 x 11,71
208	OBYTNÍ MÍSTNOST	8,442	1. POKLAD	STĚNA A STŘEŠNÍ	11,10 x 7,59
209	KUCHYŇKA	8,187	1. POKLAD	STĚNA A STŘEŠNÍ	11,10 x 7,38
210	KUCHYŇKA	12,422	1. POKLAD	STĚNA A STŘEŠNÍ	11,10 x 11,19
211	TERASA	29,171	1. POKLAD	STĚNA A STŘEŠNÍ	11,10 x 26,28
212	BALKÓN	6,798	1. POKLAD	STĚNA A STŘEŠNÍ	11,10 x 6,12

House Five-bedroom (6+1)

Sold

566 m², Prague 5, Stodůlky, V Borovičkách



VÝPIS MÍSTNOSTÍ

ČÍSLO	DRUH MÍSTNOSTI	PLOCHA m ²	PODLAŽÍ	POZNÁMKY
001	TECHNICKÉ MÍSTNOSTI	8,81	1. NP	STĚNA STRANU STĚNA STRANU
002	BAZÉN		1. NP	STĚNA STRANU
003	PRACOVNA	1,02	1. NP	NOVÁ PÁLUBA
004	PRACOVNA	12,99	1. NP	NOVÁ PÁLUBA
005	SKLEP	6,38	1. NP	STĚNA STRANU
006	KOTELNA	2,62	1. NP	STĚNA STRANU
007	SCHODIŠTĚ	0,38	1. NP	NOVÁ PÁLUBA
008	CHODBA	4,40	1. NP	STĚNA STRANU
009	GAZEŇ	14,79	1. NP	STĚNA STRANU