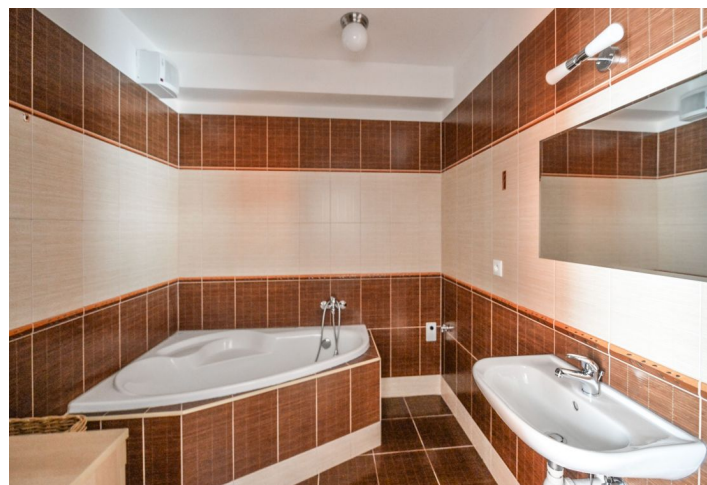


Apartment One-bedroom (2+1)

Sold

62 m², Prague 9, Dolní Počernice, Národních hrdinů



Apartment One-bedroom (2+1)

Sold

62 m², Prague 9, Dolní Počernice, Národních hrdinů

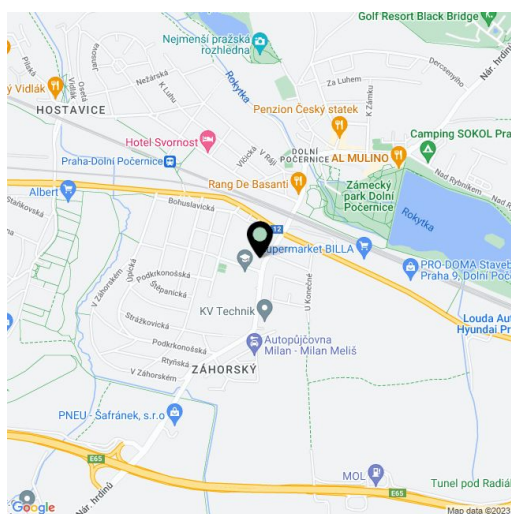
Total area	62 m ²
Parking	1 outdoor parking space
Cellar	Yes
Service price	4 000 CZK monthly
PENB	G
Reference number	25515

Cozy one-bedroom flat on the 1st floor of an apartment building without an elevator, located in a quiet residential area of Dolní Počernice, just a few steps from a bus stop with direct connections to the Depo Hostavař metro station.

The layout offers a living room, kitchen, bedroom, bathroom with bathtub, separate toilet, large walk-in wardrobe, and an entrance hall. Facilities include laminate floating floors, **large format tiles**, plastic windows, intercom. The purchase price includes an **outdoor parking space** and a **large cellar**.

Wide range of services are available in Dolní Počernice – kindergarten and elementary school, children's playground and football pitch, restaurant, cafe, local brewery, chateau with a forest theater and a large park. Good access downtown thanks to a close connection to the Prague Ring road (Pražský okruh); within short driving distance of the Černý Most shopping and entertainment center.

Interior 62.3 m², cellar 10.7 m².



* Area of the unit according to the Civil Code. The area consists of the sum total area of the entire unit bounded by perimeter walls.