



House Three-bedroom (4+1)

Rented

170 m², Praha-západ, Statenice, Statenice



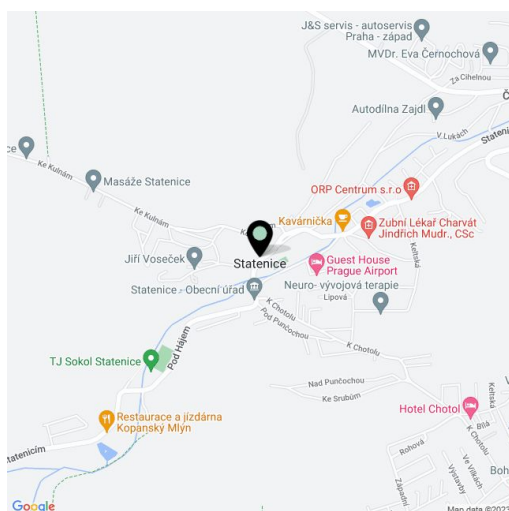


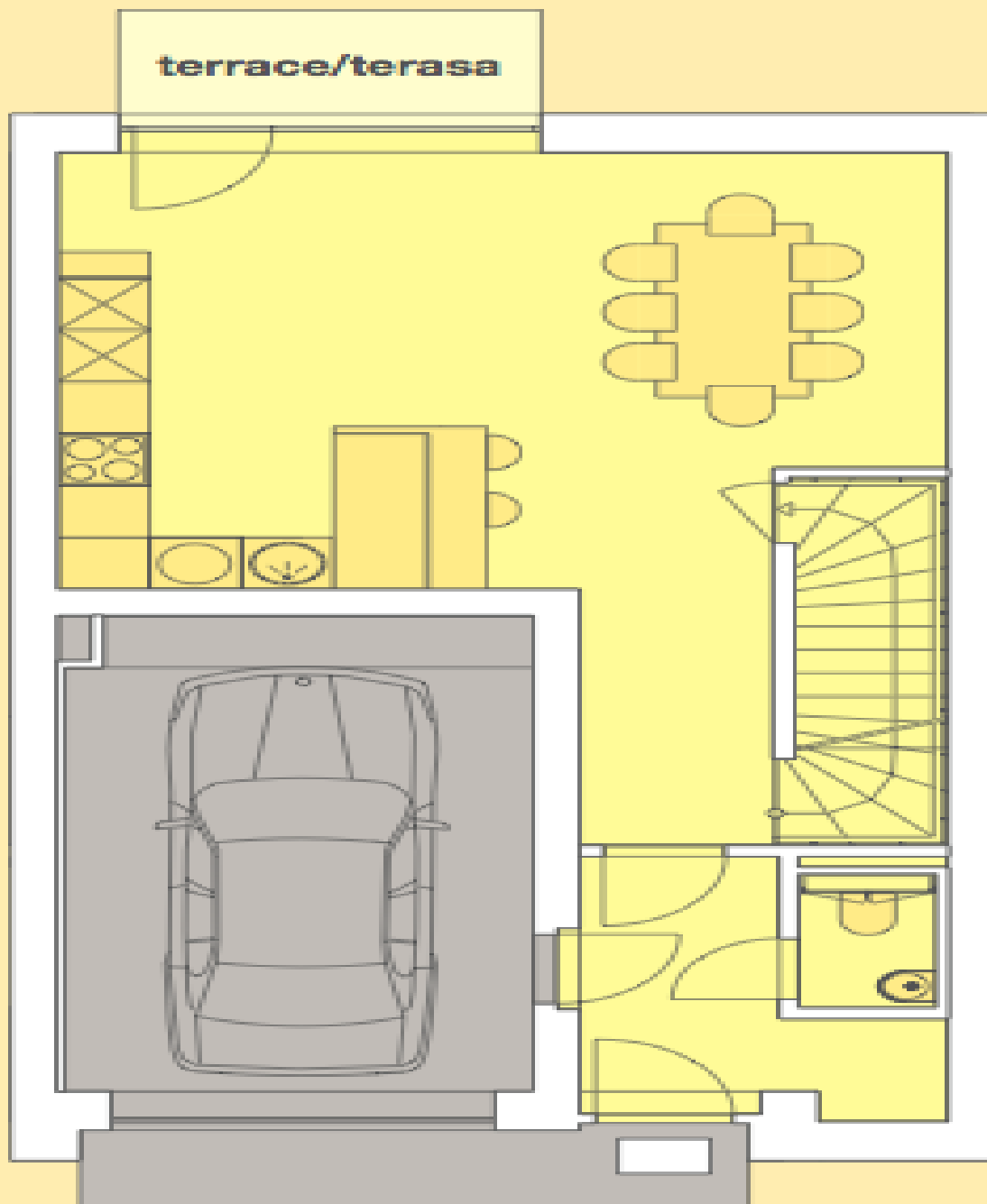
House Three-bedroom (4+1)

Rented170 m², Praha-západ, Statenice, Statenice

Parking	Garage.
Cellar	-
PENB	G
Reference number	2505
Available from	Immediately

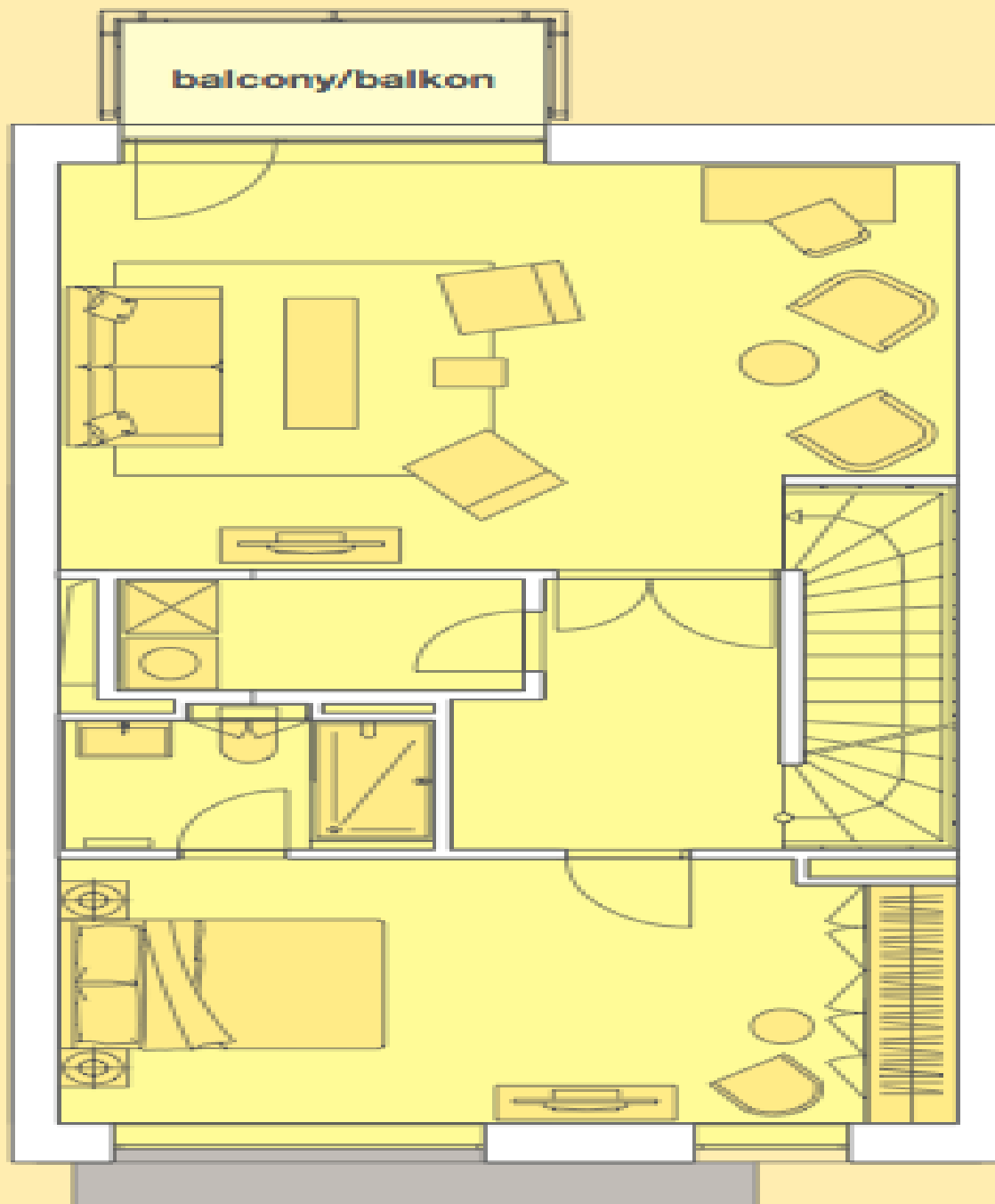
A first-class project situated in a beautifully landscaped protected area in the picturesque "Únětické" valley, 5 km from Prague, and a 10 minute drive to the airport. This residential complex located in the center of the village boasts functionalist-style villas, modern apartments and terraced houses, fully equipped gym for residents' sole use, English speaking kindergarten, florist, dry cleaner, patisserie, café, health and beauty spa and a waterside restaurant. This three-story town house has a spacious eat-in kitchen, living room, 3 bedrooms, one of which is en-suite, 2 bathrooms, and guest toilet. There are 3 terraces, 1 balcony, utility room, storage, and a little garden. Common charges CZK 3.000/month (security service, fitness club pass), utilities are billed separately. Marvelous environment for a peaceful lifestyle! Available from September 2012.



**House Three-bedroom (4+1)**170 m², Praha-západ, Statenice, Statenice**Rented**

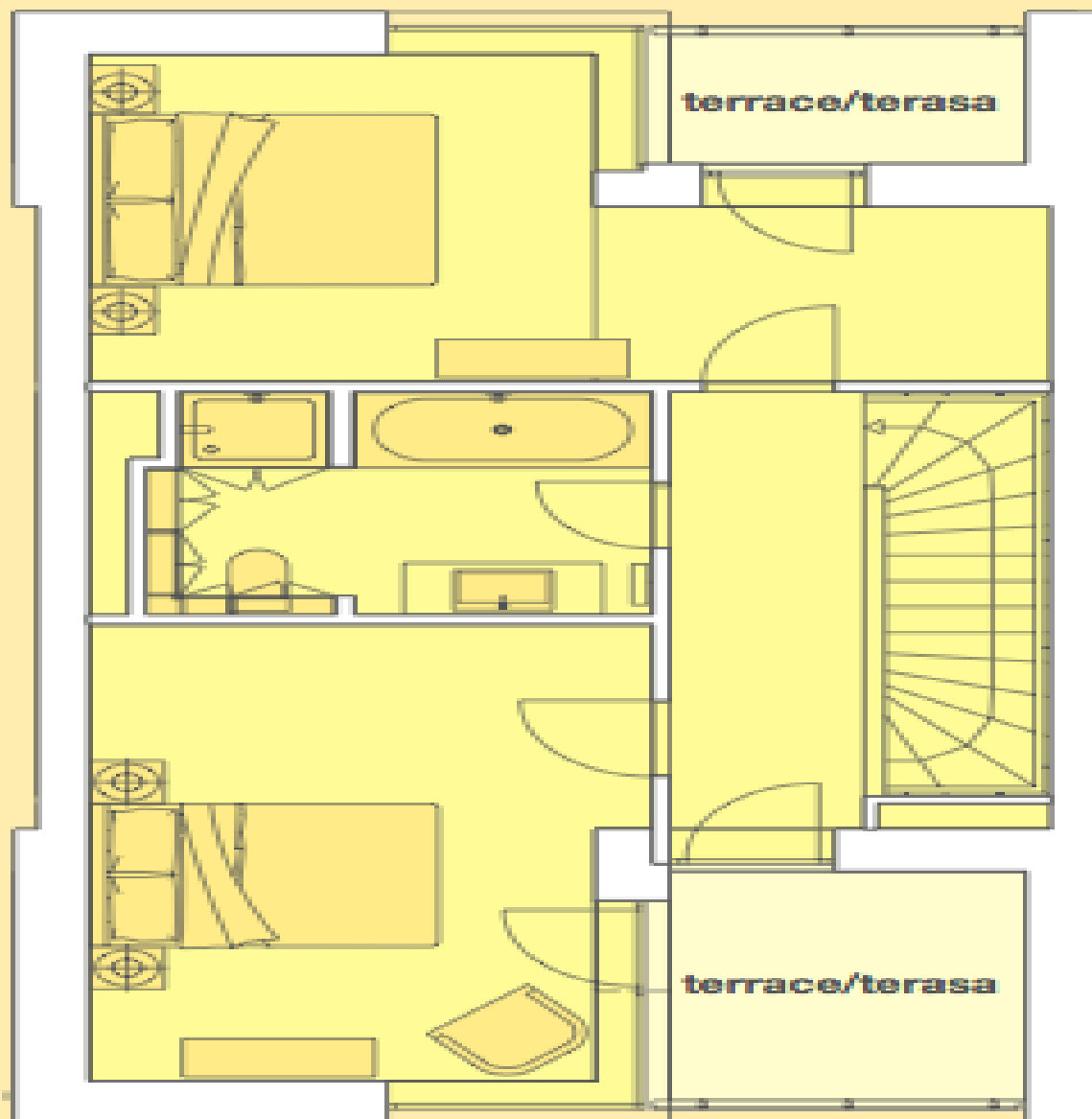
Corridor/Chodba:	5,40 m ²
Garage/Garáž:	17,41 m ²
Kitchen and dining area/Kuchyň a jídelna:	32,11 m ²
Storage space/Uložný prostor:	3,23 m ²
Toilet/WC:	1,21 m ²

Ground Floor/Přízemí

**House Three-bedroom (4+1)**170 m², Praha-západ, Statenice, Statenice**Rented**

Bedroom/Ložnice:	17,69 m ²
Corridor/Chodba + Staircase/Schodiště	10,59 m ²
Living room/Obývací pokoj:	27,13 m ²
Technical room/Technická místnost:	3,43 m ²
Bathroom, Toilet/Koupelna, WC:	3,64 m ²
Balcony/Balkon:	3,30 m ²

Floor 1/1. patro

**House Three-bedroom (4+1)****Rented**170 m², Praha-západ, Statenice, Statenice

Corridor/Chodba + Staircase/Schodiště:	10,02 m ²
Bedroom/Ložnice:	15,61 m ²
Bathroom, Toilet/Koupelna, WC:	6,67 m ²
Bedroom/Ložnice:	15,40 m ²
Terrace/Terasa:	5,19 m ²
Terrace/Terasa:	2,93 m ²

Floor 2/2. patro