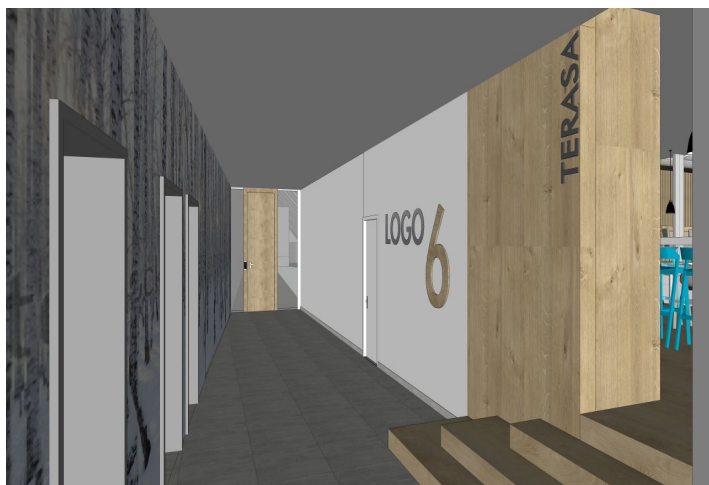
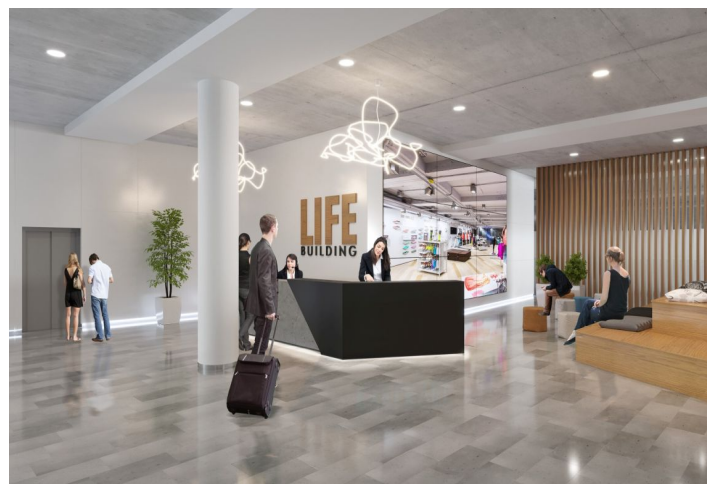
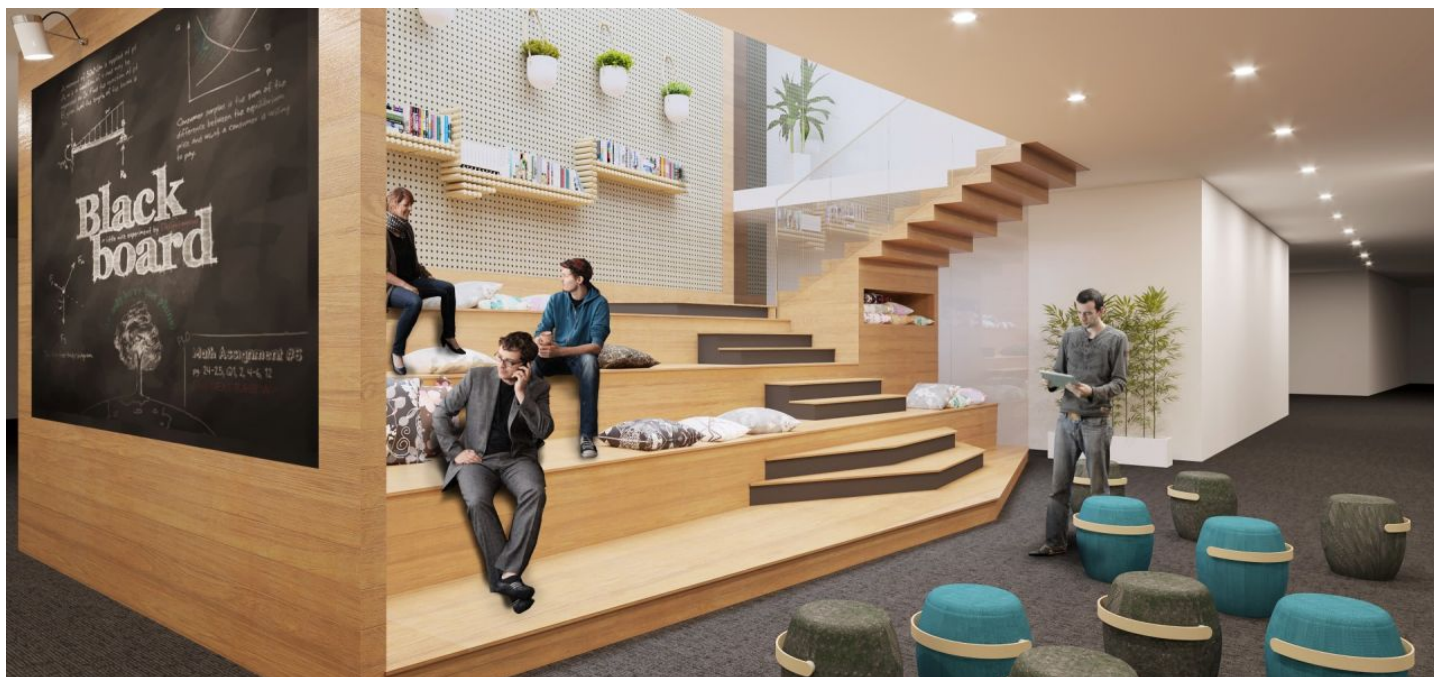


Office space

€ 16.50 / m² | CZK 413 / m²

Prague 4, Michle, Vyskočilova



Office space

€ 16.50 / m² | CZK 413 / m²

Prague 4, Michle, Vyskočilova

Service price	110 CZK monthly per m ²
Available area	348 m ²
Cellar	-
Parking	EUR 115 / ps / month
PENB	A
Reference number	25016

Office space for lease on the 1st floor in an administrative building situated in the business district of Prague 4, designed by Czech architect Jan Aulík. The seven-storey building offers more than 12,000 m² of high-quality office and retail space and ample underground parking.

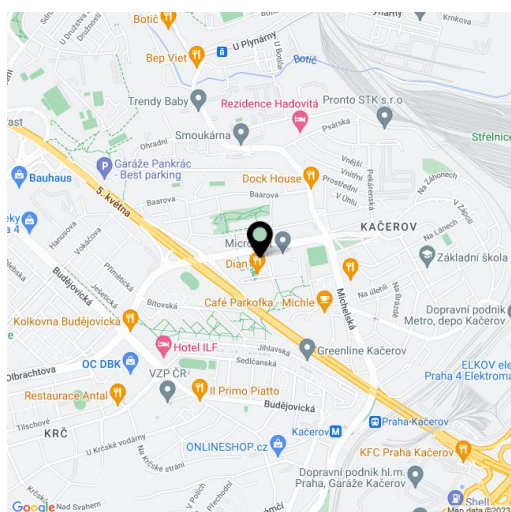
Location:

Very good accessibility by car and public transport – Budějovická and Kačerov metro stations (line C) are just 2 minutes by bus or 8 minutes on foot. A shuttle bus connects the building with the metro stations. Easy access to Prague's city ring and to the D1 highway leading to Brno.

Features and Services:

- 24/7 Access
- Access Control
- Air Conditioning
- Can be divided
- Flexible floorplan
- Floorplan greater than 2000 sqm
- Green Certification
- Monitoring
- Openable Windows
- Outdoor shades
- Parking
- Raised Floor
- Reception
- Security
- Ventilation

Rental and service charges listed without VAT. Lessee pays no commission.



1. PATRO

