

Apartment Two-bedroom (3+kk)

€ 1 783 | CZK 44 500

100 m², Prague 2, Vinohrady, Vinohradská



Apartment Two-bedroom (3+kk)

€ 1 783 | CZK 44 500

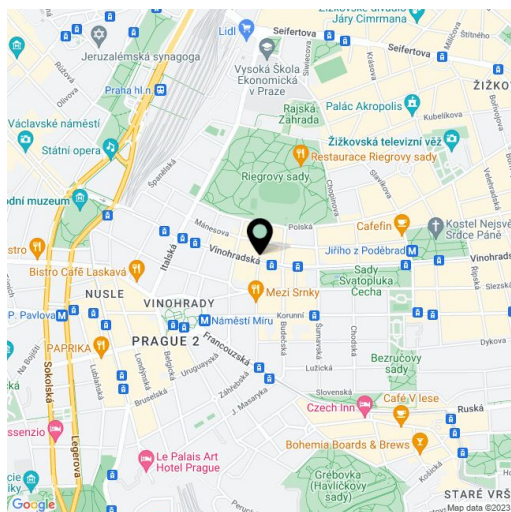
100 m², Prague 2, Vinohrady, Vinohradská

Total area	100 m ²
Parking	One parking space in the courtyard.
Cellar	Yes
Service price	Deposit for common building charges CZK 3,000. Electricity and gas will be transferred to the tenant.
PENB	E
Reference number	24837
Available from	Immediately

Refurbished 2-bathroom apartment designed to offer a modern standard of living, on the 4th floor of a completely reconstructed traditional building with a new elevator and courtyard parking. Nicely located just moments from the Jiřího z Poděbrad metro station, with quick access to the city center and full amenities within easy reach.

The interior includes a spacious sunny living/dining room overlooking green Svatopluka Čecha Park, a fully fitted walk-through kitchen, two separate bedrooms facing a quiet courtyard, en-suite bathroom (walk-in shower, toilet, and bidet), a family bathroom (bathtub, bidet, toilet), a laundry/storage room, and an entry hall with built-in wardrobes and storage.

Hardwood parquet floors, security entry door, gas boiler, central switch, dishwasher, fan and microwave ovens, induction cooktop, vacuum cleaner, curtains, washer, dryer. **Cellar.** Can be furnished at a higher rent. One courtyard parking space included in the rent price.



* Area of the unit according to the Civil Code. The area consists of the sum total area of the entire unit bounded by perimeter walls.

Apartment Two-bedroom (3+kk)

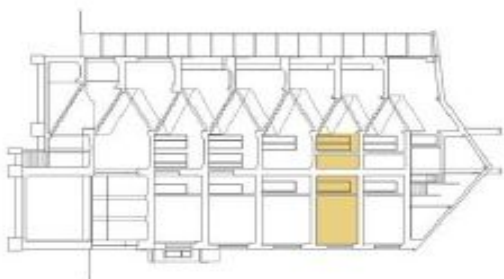
€ 1783 | CZK 44 500

100 m², Prague 2, Vinohrady, Vinohradská

LEŽENKA MÍSTNOSTI	PLOCHA_M2
C. NÁZEV MÍSTNOSTI	
1. PŘEDSÍŇ	4,7
2. KOKOŘA	2,0
3. KOUPELNA	4,4
4. LOŽNICE	18,9
5. LOŽNICE	20,8
6. KUCHYŇ	14,7
7. KOUPELNA	4,7
B. OBRŮVACÍ POKOJ	23,4
PROHLAŠOVÁ PLOCHA	93,8 m²



*PROHLAŠOVÁ PLOCHA DLE PRŮMĚRNÉ VLASTNÍKŮ 103,3 m²



popis jednotky

číslo bytu 503

podlaží 5.np

plocha 93,8 m²

dispozice 3+kk

SMP _BYT