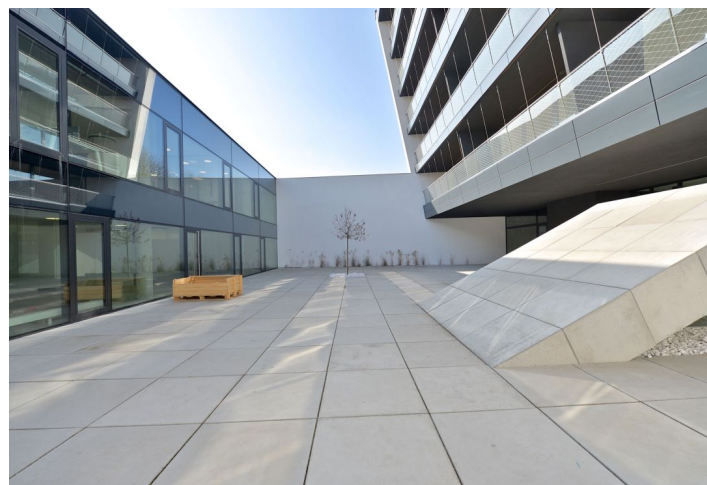
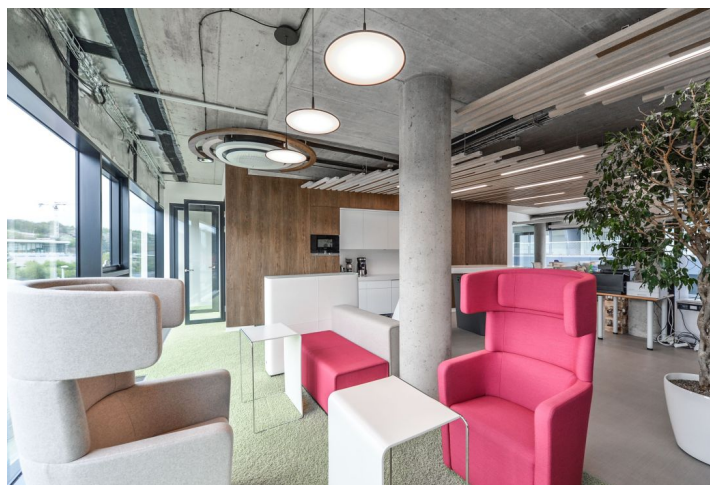


Office building

Rented

Prague 5, Radlice, Radlická



Office building

Rented

Prague 5, Radlice, Radlická

Service price	3 EUR monthly per m ²
Total building area	1 014 m ²
Tenant consumption	—
Parking	130 EUR
Parking service charges	—
Parking ratio	—
Certification	—
PENB	G
Reference number	24804

New building with unique architectural design offering high standard office space to lease in Prague 5. The building boasts an indoor atrium, which can be used as a relaxation zone.

Location:

The building is situated on a hill between Malvazinky and Radlická streets and is easily accessible by car and public transport. Within walking distance of the Radlická metro station (line B) and tram stops. Easy connection to the Prague ring road, highway D5 (direction Rozvadov), and also to the city center. Sports hall with swimming pool and tennis court, shops and restaurants are in the vicinity of the building.

Features and Services:

Shared meeting rooms equipped with furniture and quality audio and video technology
Reception service
Inner atrium with possibility to establish a relaxation zone
Internet available
Air-conditioning and heating
Intelligent light control
Possibility of indoor blinds
Suspended ceilings
Raised floors
Kitchenette and toilets
Parking for bikes
Underground parking

Rental and service charges listed without VAT. Lessee pays no commission.



