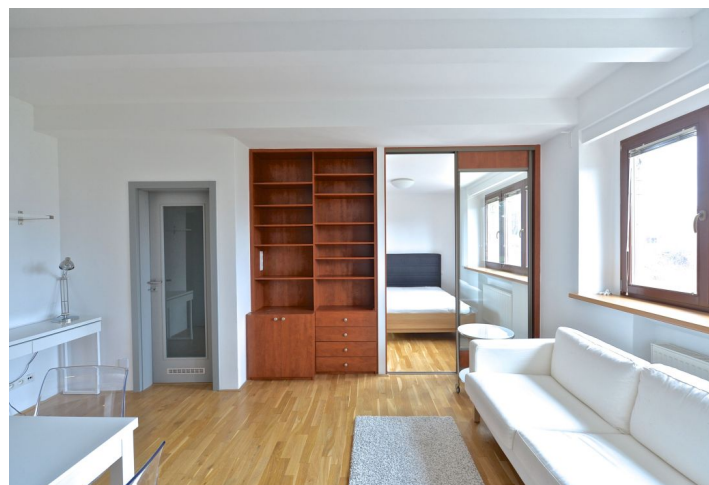
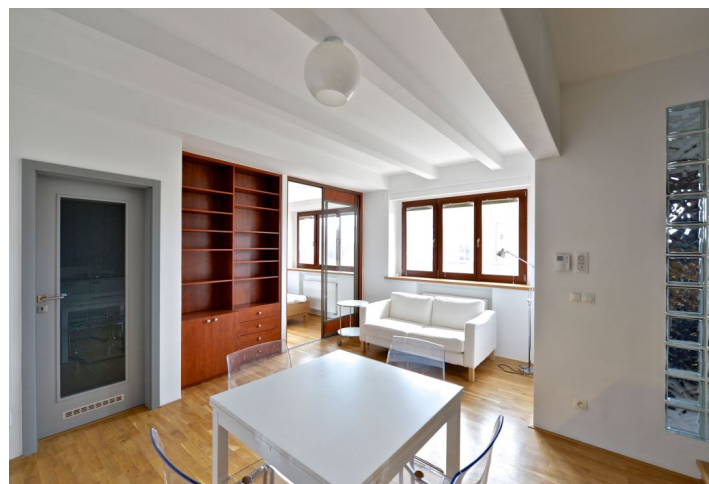


## Apartment One-bedroom (2+kk)

Rented

48 m<sup>2</sup>, Prague 6, Dejvice, Vostrovská



# Apartment One-bedroom (2+kk)

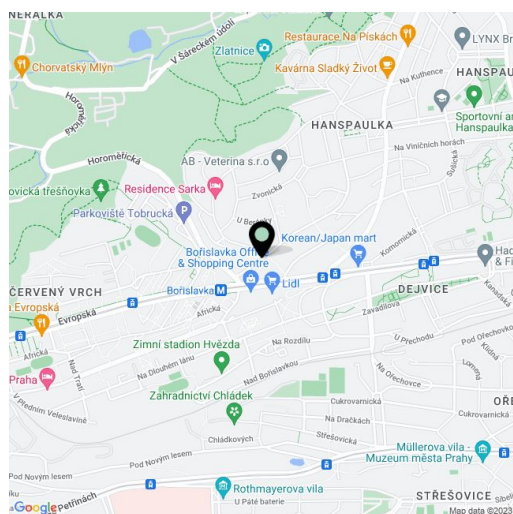
**Rented**48 m<sup>2</sup>, Prague 6, Dejvice, Vostrovská

Total area	48 m <sup>2</sup>
Parking	-
Cellar	-
PENB	C
Reference number	24795
Available from	Immediately

Furnished 1-bedroom flat on the lower ground floor of a completely renovated 1936 villa with a shared landscaped garden. Located in the prestigious green residential neighborhood of Hanspaulka, convenient to the international schools in Prague 6 as well as to the airport. Great connection to the city center (Bořislavka metro station, buses, trams), full amenities within easy reach.

The interior features living / dining room with a fully fitted open kitchen, one bedroom with lots of built-in wardrobes, shower bathroom with toilet, walk-in closet / storage room, and entry hall with more built-in wardrobes. The tenants can use the shared terrace and garden.

Separate entrance, part of shared garden, security foil in windows, wooden floors, tiles, security entry door, blinds, washer, dryer, dishwasher, alarm. Common building charges approx. CZK 3000 per month (for 1 person). Electricity will be transferred to the tenant. Available from mid February 2022.



\* Area of the unit according to the Civil Code. The area consists of the sum total area of the entire unit bounded by perimeter walls.

## Apartment One-bedroom (2+kk)

Rented

48 m<sup>2</sup>, Prague 6, Dejvice, Vostrovská

