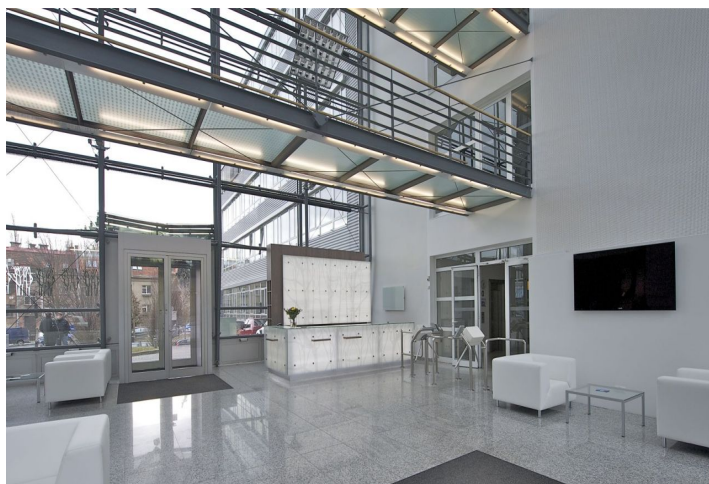




Office space

Prague 6, Dejvice, Evropská

Rented





Office space

Rented

Prague 6, Dejvice, Evropská

| | |
|-------------------------|------------------------------------|
| Service price | 190 CZK monthly per m ² |
| Available area | 773 m ² |
| Cellar | - |
| Parking | EUR 80 / ps / month |
| PENB | G |
| Reference number | 24566 |

Office space for lease on the 4th floor in an administrative complex which consists of two buildings with four entrances. Building is located near a major summer house and offers a range of services, such as a restaurant, cafe and fitness. There is also a shared terrace for relaxing.

Location:

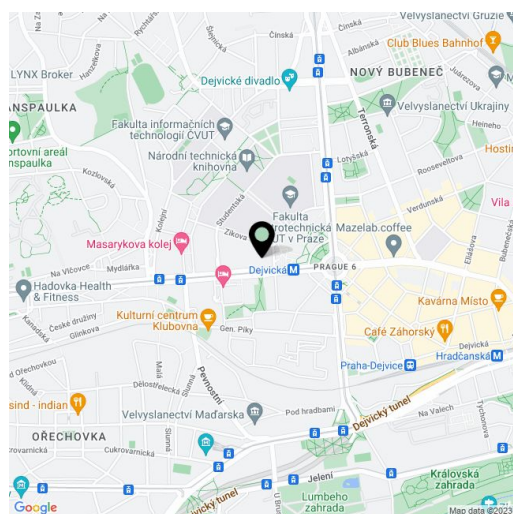
The complex is located on Evropská Street in Prague 6 and is very easy accessible by car and public transport – the Dejvická metro station (line A) is only two tram stops away. There is a tram stop directly outside the building. Easy access to Vaclav Havel Airport Prague and to the city center.

Features and Services:

- Main reception lobby with a coffee shop
- 24-hour security/CCTV
- Full-time on-site property management team
- Air conditioning
- Openable windows
- Raised floors/floor boxes
- Suspended ceilings
- Kitchenette and toilets
- Restaurant
- Common garden terrace adjacent to food services
- Full service fitness center (sauna, personal training, group exercise classes, corporate challenge programs)
- Underground parking and parking for visitors

Available from July, 2023.

Rental and service charges listed without VAT. Lessee pays no commission.





Office space

Prague 6, Dejvice, Evropská

Rented

