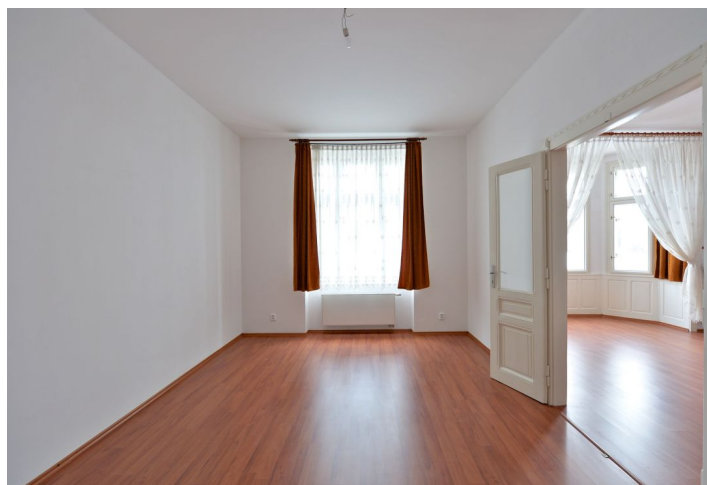
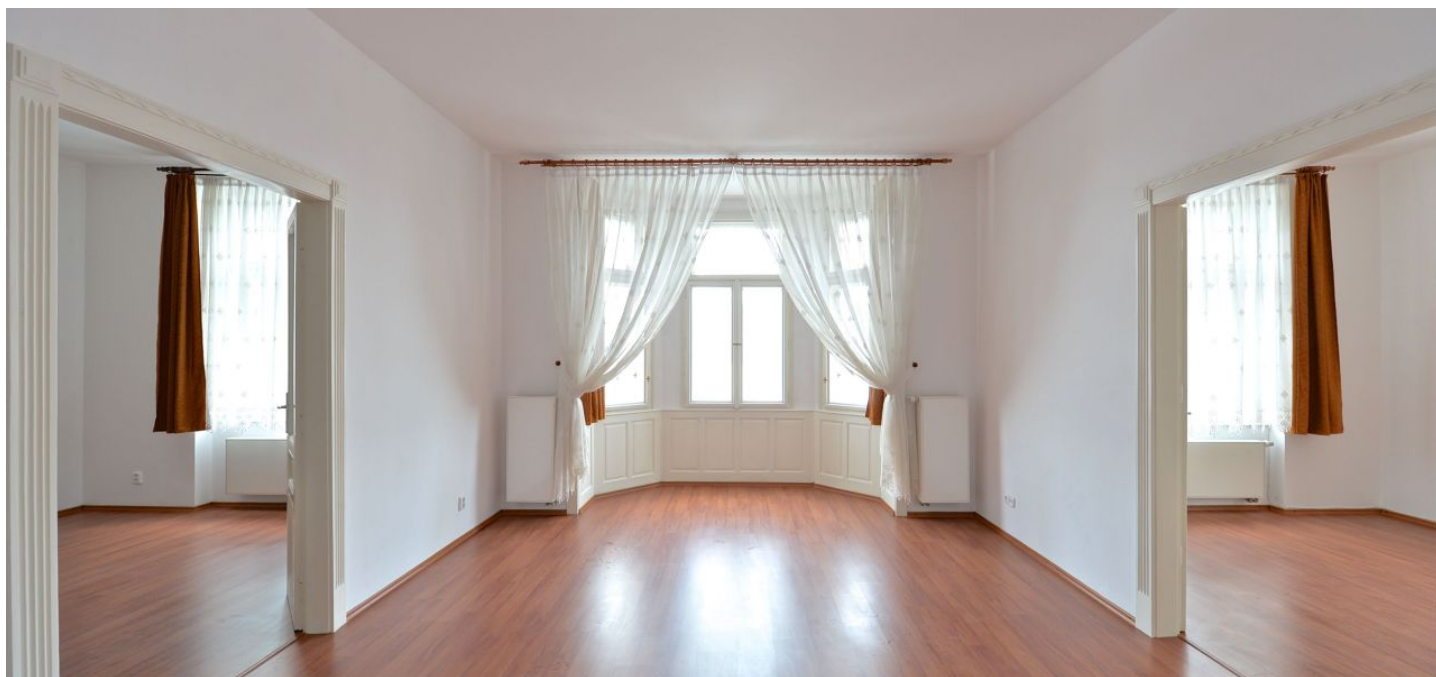




Apartment Three-bedroom (4+1)

Rented

150 m², Prague 5, Smíchov, Na Plzeňce





Apartment Three-bedroom (4+1)

Rented

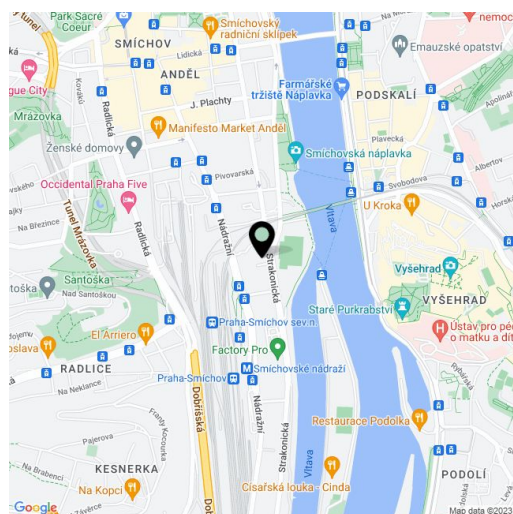
150 m², Prague 5, Smíchov, Na Plzeňce

Total area	150 m ²
Parking	Parking can be arranged.
Cellar	-
PENB	E
Reference number	24548
Available from	Immediately

Spacious unfurnished 3-bedroom flat with views of the Vyšehrad Castle, situated on the second floor of a well kept renovated Art Nouveau building with a new lift. Located in Prague 5 - Smíchov, in close vicinity of the Vltava riverbank, just a few blocks from Smíchovské nádraží and Anděl metro stations, with full amenities and quick access to the city center.

The interior offers a large entrance hall, living room with a bay window, a fully fitted and equipped eat-in kitchen, three bedrooms, bathroom (bathtub, walk-in shower, bidet, toilet), guest toilet with bidet shower, and utility room. One of the bedrooms is walk-through, one bedroom is furnished.

High ceilings, large windows, laminated and tile floors, built-in wardrobes, double glazed windows, gas heating, washer, dishwasher. Parking can be arranged at CZK 1200/month. Common building charges and water CZK 700/person/month. Gas and electricity are billed separately.



* Area of the unit according to the Civil Code. The area consists of the sum total area of the entire unit bounded by perimeter walls.



Apartment Three-bedroom (4+1)

Rented

150 m², Prague 5, Smíchov, Na Plzeňce

