



Apartment Two-bedroom (3+kk)

Sold

92 m², Prague 2, Vinohrady, Mikovcova





Apartment Two-bedroom (3+kk)

Sold92 m², Prague 2, Vinohrady, Mikovcova

Total area	92 m ²
Parking	-
Cellar	Yes
PENB	G
Reference number	24488

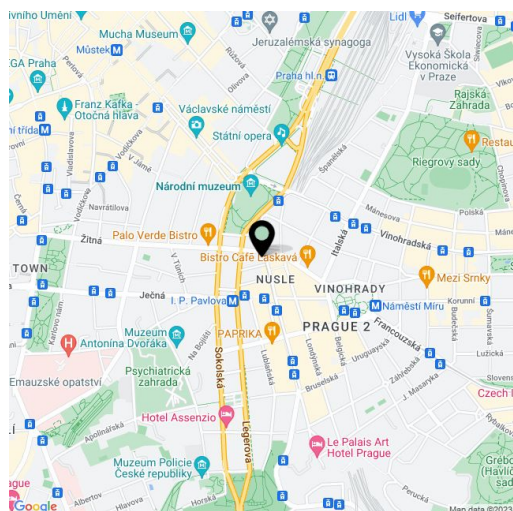
Lovely air-conditioned duplex on the top floor of an apartment building with a lift, located only a few-minutes' walk from the National Museum and Wenceslas Square, close to the metro station and tram stops at I. P. Pavlova and náměstí Míru square.

The lower floor of the apartment consists of a loft-type living room with a kitchen and dining area, as well as a children's bedroom, bathroom with shower and toilet, storeroom, utility room, and an entrance hall. The upper floor consists of a bedroom, bathroom with a whirlpool tub, and a small gallery. Both bathrooms have a window.

The equipment includes **Midea air-conditioning** in all rooms, fine wooden floating floors, large format tiles, **large wooden atelier windows**, Sapeli solid wood interior doors, Gorenje kitchen, design lighting, heated bathroom floor on the upper level, Junkers gas boiler. The purchase price includes a **cellar** (not yet allocated). The final approval took place in 2007, along with the complete reconstruction of the building. Lift to the mezzanine.

Conveniently located within walking distance of the historic center and popular Riegrovy sady park, with full amenities nearby and excellent transport accessibility, including easy connection to the D1 highway.

Interior 92 m².



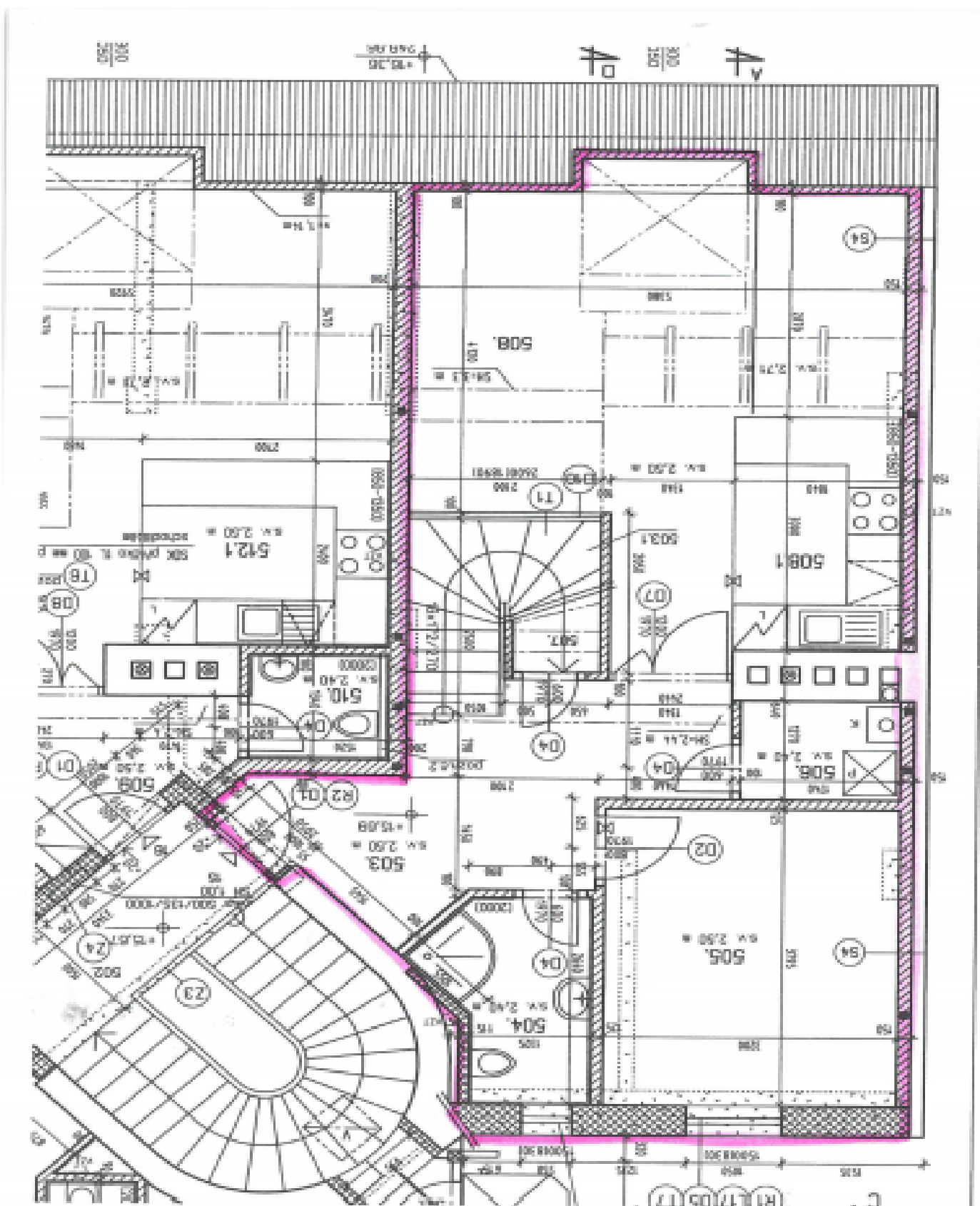
* Area of the unit according to the Civil Code. The area consists of the sum total area of the entire unit bounded by perimeter walls.



Apartment Two-bedroom (3+kk)

Sold

92 m², Prague 2, Vinohrady, Mikovcova





Apartment Two-bedroom (3+kk)

Sold

92 m², Prague 2, Vinohrady, Mikovcova

