



Apartment One-bedroom (2+kk)

Rented

56 m², Prague 7, Holešovice, V Háji





Apartment One-bedroom (2+kk)

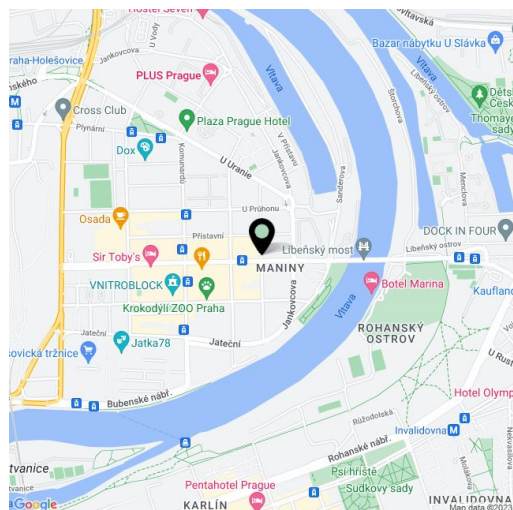
Rented56 m², Prague 7, Holešovice, V Háji

Total area	71 m ²
Floor area*	56 m ²
Balcony	4 m ²
Terrace	11 m ²
Parking	One on-site garage parking space.
Garage	Yes
Cellar	Yes
PENB	B
Reference number	24285
Available from	Immediately

Boasting a terrace and a balcony with views of the Vltava River, Vítkov Hill, and the Prague Castle complex, this light-filled furnished 1-bedroom apartment is on the sixth top floor of the Vltavská vyhlídka residential project. Situated in a dynamically developing part of Prague 7 - Holešovice, a quiet location with full amenities within easy reach, convenient to the Vltavská and Nádraží Holešovice metro stations. Excellent access to the city center, convenient to the Austrian School and the Squash Holešovice Center.

The interior includes a corner living room with a fully fitted open plan kitchen, a dining area, and access to the terrace, one bedroom with access to the balcony, a bathroom with a bathtub and toilet, and an entrance hall with built-in wardrobes and storage.

Oak floors in the living room, laminate floors in the bedroom, tiles, French windows, security entry door, air-conditioning in the living room, dishwasher, microwave oven, 3.8 sq. m. cellar, children's playground in the courtyard. One garage parking space included. Deposit for common building charges, heating, and water CZK 3,900/month. Electricity will be transferred to the tenant. Interior 56 sq. m., terrace 11 sq. m., balcony 4 sq. m. Available from September 2022.



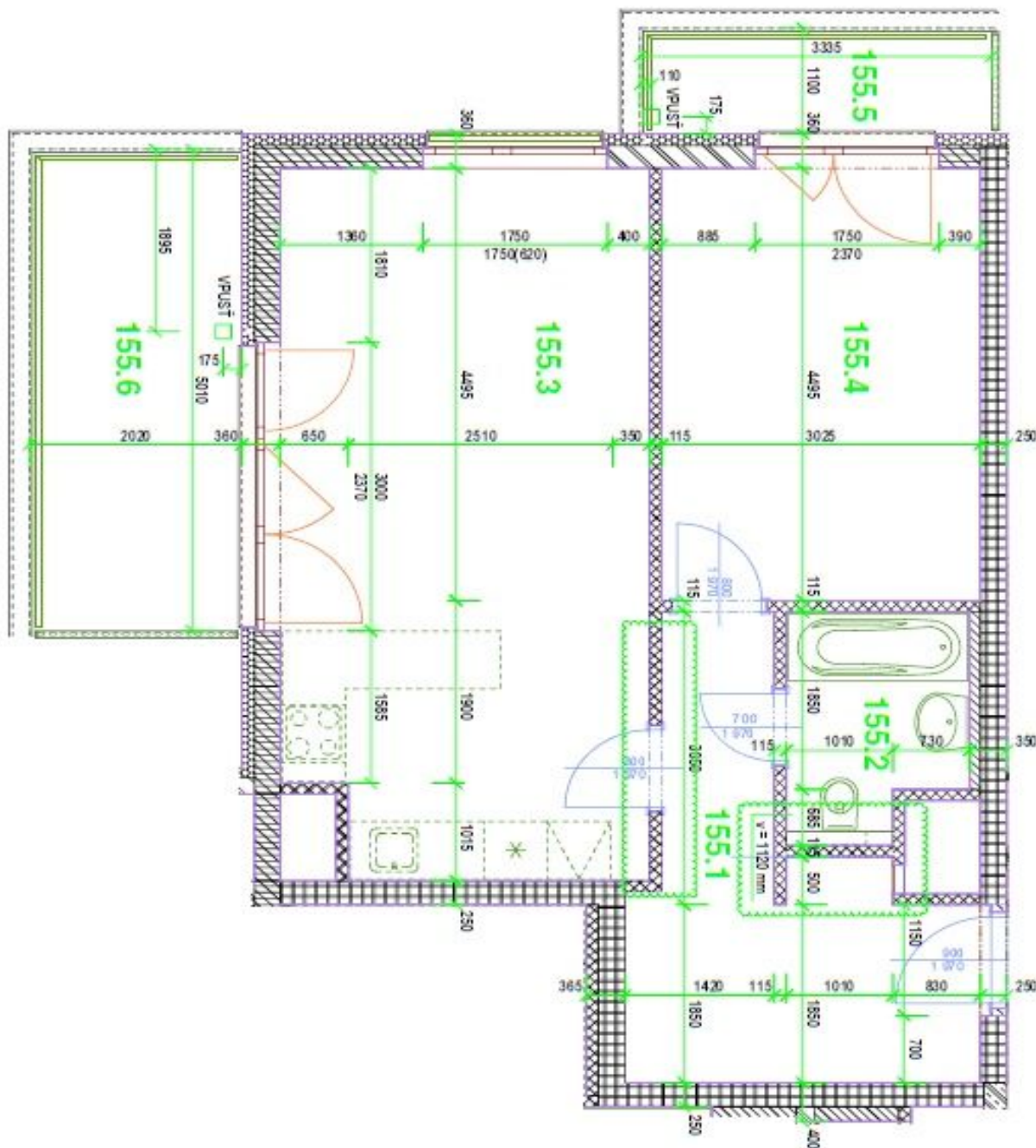
* Area of the unit according to the Civil Code. The area consists of the sum total area of the entire unit bounded by perimeter walls.



Apartment One-bedroom (2+kk)

Rented

56 m², Prague 7, Holešovice, V Háji





Apartment One-bedroom (2+kk)

Rented

56 m², Prague 7, Holešovice, V Háji

153

154

155

156

