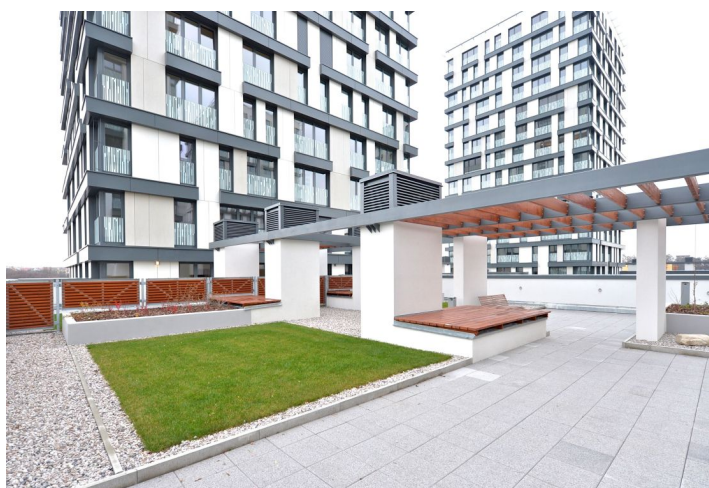


Apartment Studio (1+kk)

Rented

37 m², Prague 3, Žižkov, Olšanská



Apartment Studio (1+kk)

Rented

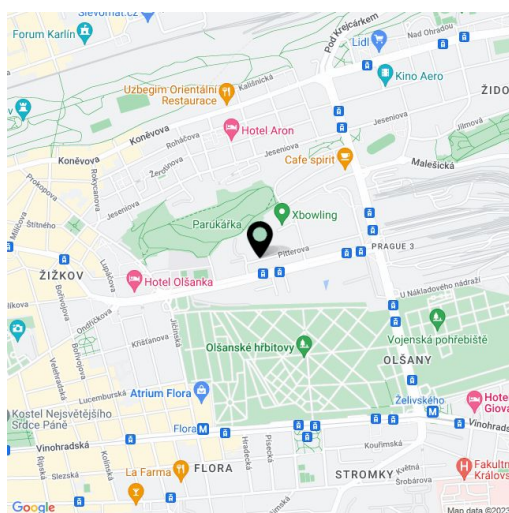
37 m², Prague 3, Žižkov, Olšanská

Total area	37 m ²
Parking	Garage parking.
Garage	Yes
Cellar	Yes
PENB	B
Reference number	24279
Available from	Immediately

Brand new modern studio with access to a large shared terrace providing nice green views, situated on the fifth floor of the new Garden Towers residential project with a reception, landscaped courtyard and underground parking. Located in close vicinity of Parukářka Park, with full amenities within easy reach (Flora shopping mall, Olšanská clinic, post office, sports facilities) and quick access to the city center (multiple tram lines, Želivského and Flora metro stations).

The interior includes bedroom / living room with a fully fitted open plan kitchen and three French windows, shower bathroom with toilet, and entry hall.

Wooden floating floors, tiles, security entry door, built-in wardrobe, dishwasher, induction cooktop, fan oven, microwave oven, video entry phone, alarm, storage room in the corridor of the building on the same floor, chip entry to the building. One garage parking space included. Common building charges approx. CZK 2200 per month. Electricity will be transferred to the tenant's name.

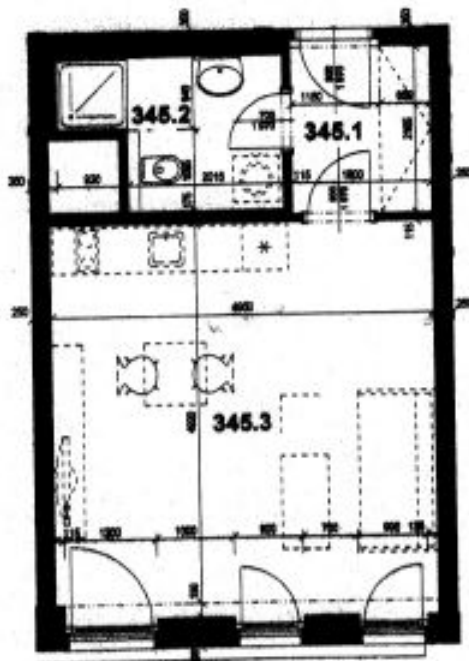


* Area of the unit according to the Civil Code. The area consists of the sum total area of the entire unit bounded by perimeter walls.

Apartment Studio (1+kk)

Rented

37 m², Prague 3, Žižkov, Olšanská

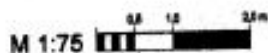


**RESIDENCE GARDEN TOWERS
OBJEKT C - BYT 345
6. NP / M 1:75 / A4**



ČÍSLO MÍSTN.	NÁZEV MÍSTNOSTI	PLOCHA cca (m ²)
345.1	PŘEDSÍŇ	4,0
345.2	KOUPELNA + WC	4,6
345.3	OBÝVACÍ POKOJ + KK	25,3
UŽITNÁ PLOCHA		33,9

Celková podlahová plocha bytu, vypočtená dle platných právních předpisů (nařízení vlády č. 396/2013 Sb.), činí 36,6 m².



PŘÍLOHA 2