



# Office space

Prague 5, Jinonice, Radlická

Rented





## Office space

Prague 5, Jinonice, Radlická

**Rented**

<b>Service price</b>	130 CZK monthly per m <sup>2</sup>
<b>Available area</b>	457 m <sup>2</sup>
<b>Cellar</b>	-
<b>Parking</b>	EUR 90 / ps / month
<b>PENB</b>	B
<b>Reference number</b>	24248

Class A office space for lease on the 4th floor in the administrative building situated in Prague 5 - Jinonice.

**Location:**

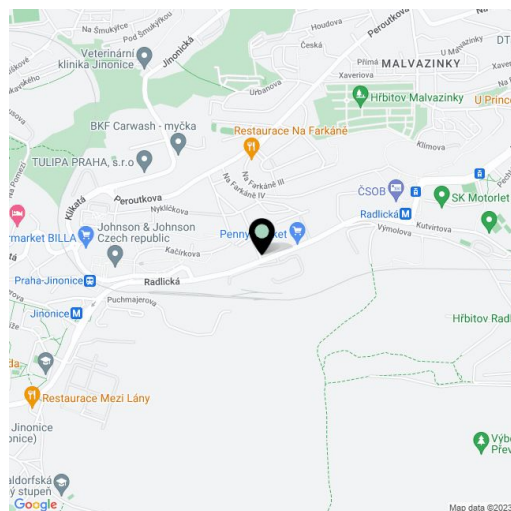
Good accessibility by car and public transport – in close vicinity of the Nové Butovice metro station (line B) and bus stops, with easy connection to the D5 highway. The Galerie Butovice shopping center, Motol golf course and the nature reserve at Prokop Valley are all nearby.

**Features and Services:**

- Cooling, heating, ventilation
- Raised floor (with carpets)
- Suspended ceilings
- Lighting
- Openable windows
- External sunblinds
- Sprinklers
- Kitchenettes
- Possibility of connecting to land lines, ISDN
- Possibility of connecting to fiber optic cable
- Central reception
- Security Service
- Access by magnetic card
- Bicycle parking with showers
- Indoor and outdoor parking places

Images might not accurately reflect the current state of the premises.

Rental and service charges listed without VAT. Lessee pays no commission.

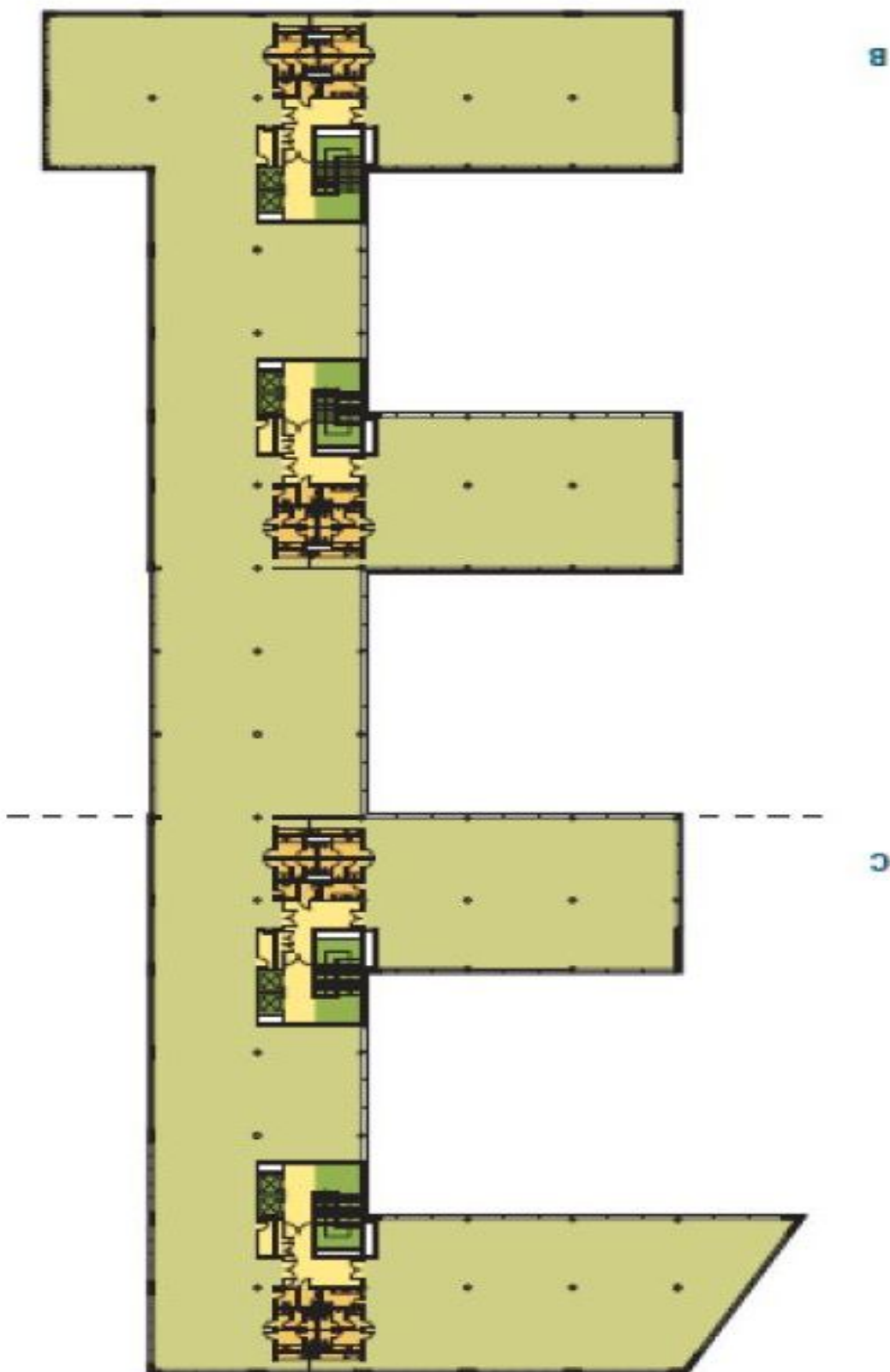




## Office space

Prague 5, Jinonice, Radlická

Rented



Typical Floor Plan Building B, C / Plán typického podlaží v budově B, C