

Apartment Studio (1+kk)

Sold

43 m², Prague 4, Krč, Panuškova



Apartment Studio (1+kk)

Sold

43 m², Prague 4, Krč, Panušková

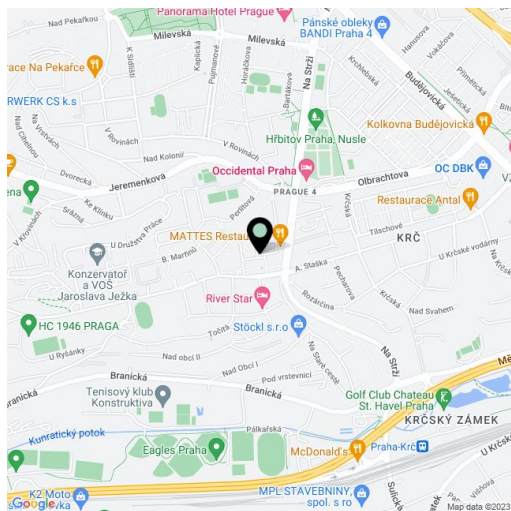
| | |
|------------------|-------------------|
| Total area | 50 m ² |
| Floor area* | 43 m ² |
| Loggia | 7 m ² |
| Parking | - |
| Cellar | - |
| Service price | 3 000 CZK monthly |
| PENB | G |
| Reference number | 24179 |

Bright studio apartment with a terrace overlooking the city on the 10th floor of a building from 2008 with a lift and reception, located on the border of Krč and Podolí, Prague 4. Complete amenities in the immediate vicinity, excellent transport links to the center and easy access to the D1 highway. Good investment opportunity - Budějovická and Pankrác business zones are nearby.

This **south-facing** apartment consists of a room with kitchen, bathroom with bathtub, separate toilet, and entrance hall with built-in wardrobes. Facilities include laminate floating floors, ceramic tiles, **wood French windows**, fully equipped kitchen with Bosch appliances. Possibility to rent a garage parking space.

Close to the house is a sports center with tennis courts, a supermarket, restaurants and other services. Budějovická shopping center and metro station are located two bus stops or a 10-minute walk away. **Just steps from a planned metro station (Olbrachtova, future line D).**

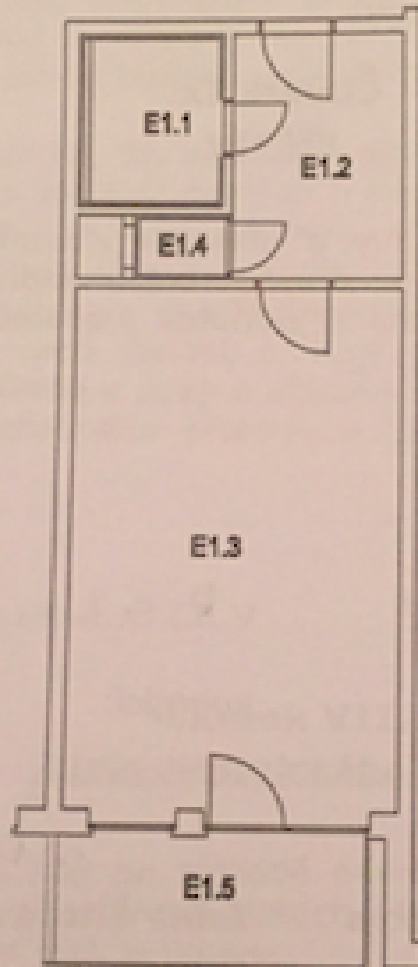
Common building charges CZK 3 000 / month.
Interior 43 m², terrace 7 m².



* Area of the unit according to the Civil Code. The area consists of the sum total area of the entire unit bounded by perimeter walls.

Apartment Studio (1+kk)

Sold

43 m², Prague 4, Krč, Panuškova

| | | |
|----------------------------|--------------------|-------|
| E1.1 | KOUPELNA | 4,12 |
| E1.2 | PŘEDSÍŇ | 7,54 |
| E1.3 | OBÝVACÍ POKOJ + KK | 31,10 |
| E1.4 | WC | 1,01 |
| E1.5 | BALKON | 6,72 |
| UŽITNÁ PLOCHA BEZ BALKONU | | 43,77 |
| CELKOVÁ PLOCHA BEZ BALKONU | | 45,32 |