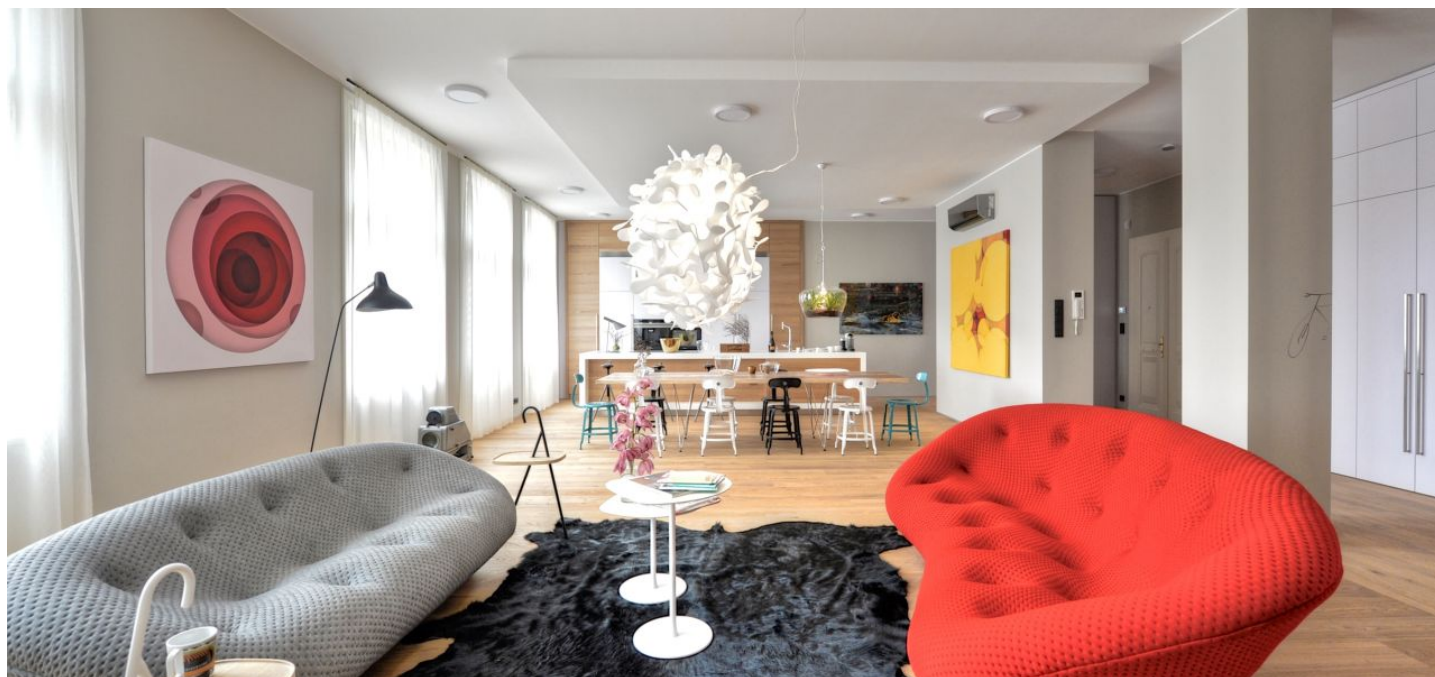


## Apartment Five-bedroom (6+kk)

Rented

208 m<sup>2</sup>, Prague 1, Josefov, Pařížská



## Apartment Five-bedroom (6+kk)

Rented

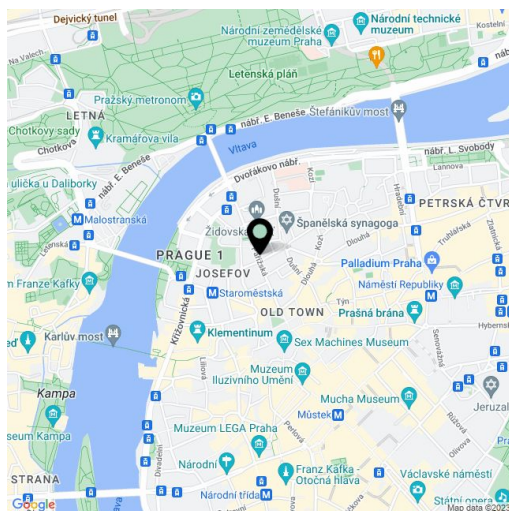
208 m<sup>2</sup>, Prague 1, Josefov, Pařížská

|                  |   |
|------------------|---|
| Total area       | 212 m <sup>2</sup>  |
| Floor area*      | 208 m <sup>2</sup>  |
| Balcony          | 4 m <sup>2</sup>  |
| Parking          | -   |
| Cellar           | -   |
| Service price    | Common building charges<br>CZK 20,000/month.<br>Electricity - transferred to the<br>tenant. |
| PENB             | D   |
| Reference number | 24172   |
| Available from   | Immediately   |

This unique unfurnished luxury apartment designed by the Czech SAD architectural studio boasts one of the most prestigious addresses in Prague. This completely refurbished apartment is situated on the 4th floor of a meticulously reconstructed stately Art Nouveau building with an elevator, in the heart of the historic center, within instant reach of high-end boutiques, shops, and restaurants. Located a few minutes from Old Town Square and the Vltava riverbank, within easy reach of most of Prague's historic sights.

The playful interior features a huge living room with a kitchen and dining area with a dining table that seats ten (total of 75 sq. m.), four bedrooms, five bathrooms, a study, an entrance hall, and two balconies.

Air-conditioning, high ceilings, many built-in wardrobes and storage, hardwood parquet floors, tiles, wooden windows, curtains, alarm. The apartment is offered unfurnished.

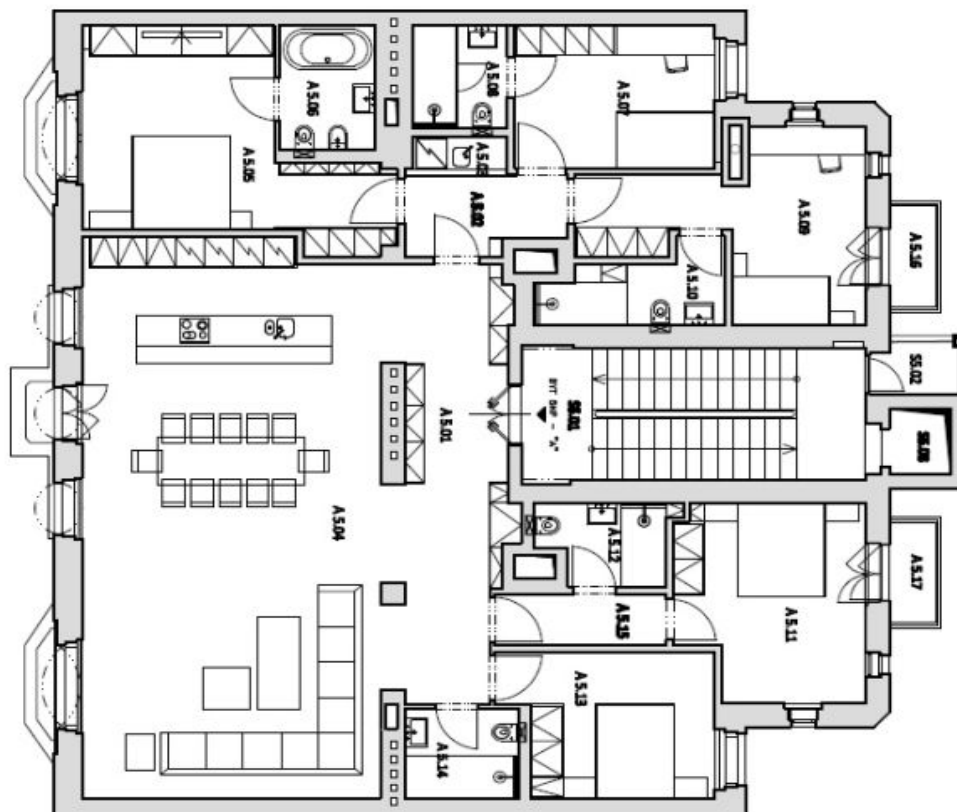


\* Area of the unit according to the Civil Code. The area consists of the sum total area of the entire unit bounded by perimeter walls.

# Apartment Five-bedroom (6+kk)

Rented

208 m<sup>2</sup>, Prague 1, Josefov, Pařížská



PŮDORYS 5.NP

| Č.                | NÁZEV                           | m <sup>2</sup>      |
|-------------------|---------------------------------|---------------------|
| SPOLEČNÉ PROSTORY |                                 | <b>CELKEM 24,0</b>  |
| SS.01             | SCHODIŠTĚ                       | 19,9                |
| SS.02             | LODŽIE                          | 2,3                 |
| SS.03             | VÝTANÍ                          | 1,8                 |
| BŮT SŇP "A"       |                                 | <b>CELKEM 211,6</b> |
| A.5.01            | CHODBA                          | 19,3                |
| A.5.02            | CHODBA                          | 6,0                 |
| A.5.03            | ÚKLIDOVÁ KOMORA                 | 1,3                 |
| A.5.04            | OBÝV. POKOJ + KUCHYŇE + JÍDELNA | 74,8                |
| A.5.05            | LOŽNICE                         | 21,6                |
| A.5.06            | KOUPELNA + WC                   | 5,3                 |
| A.5.07            | LOŽNICE                         | 12,4                |
| A.5.08            | KOUPELNA + WC                   | 4,3                 |
| A.5.09            | LOŽNICE                         | 16,0                |
| A.5.10            | KOUPELNA + WC                   | 5,3                 |
| A.5.11            | LOŽNICE                         | 15,3                |
| A.5.12            | KOUPELNA + WC                   | 4,4                 |
| A.5.13            | LOŽNICE                         | 12,5                |
| A.5.14            | KOUPELNA + WC                   | 4,4                 |
| A.5.15            | CHODBA                          | 4,1                 |
| A.5.16            | BALKON                          | 2,3                 |
| A.5.18            | BALKON                          | 2,3                 |