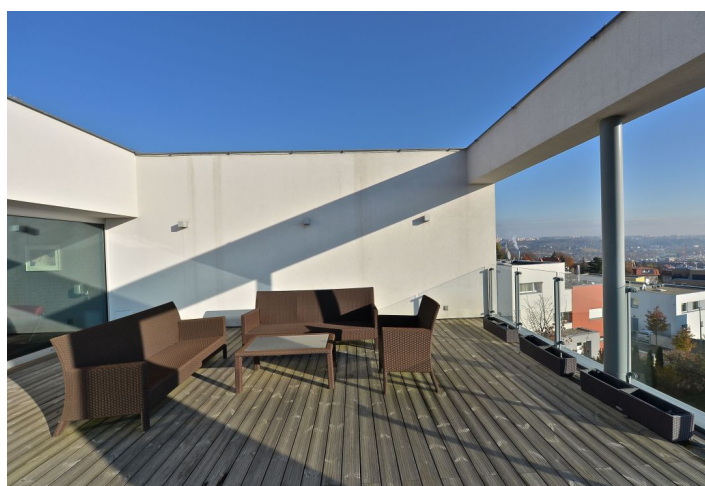
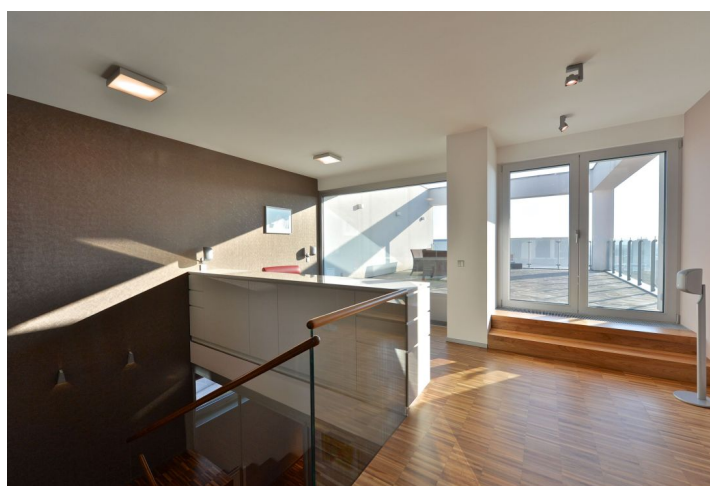


House Six-bedroom (7+1)

Ask for price

450 m², Prague 6, Dejvice



House Six-bedroom (7+1)

[Ask for price](#)450 m², Prague 6, Dejvice

Plot	747 m ²
Foot print	170 m ²
Garden	577 m ²
Parking	Garage for 2 cars
Garage	Yes
Cellar	Yes
PENB	B
Reference number	24118

Contemporary low-energy villa with stunning views of the city, boasting 2 spacious terraces and an outdoor swimming pool. The house is situated in the prestigious residential area of Hanspaulka, just a 10-minute walk from the beautiful natural area of Šárecké údolí valley.

The villa consists of a total of 4 floors, including a partially recessed basement with a guest room, bathroom, toilet, utility room / laundry, and a playroom / storage. On the ground floor there is a living room with access to a spacious terrace, a separate kitchen, guest toilet, and a garage for 2 cars. The first floor includes two children's bedrooms, a shared bathroom with shower, separate toilet, master bedroom with en-suite bathroom (bathtub, shower, toilet) and private dressing room, and a study. The last, second floor consists of a bedroom, gallery, and a terrace.

Equipped with **air-conditioning** on the top floor, hardwood floors, ceramic tiles, aluminum windows with triple glazing and shutters, fully equipped Stopka kitchen with **Miele** appliances, bathrooms with heated floors and Villeroy & Boch and Hansgrohe sanitary ware, gas boiler, outdoor heated swimming pool and an automatic irrigation system in the garden.

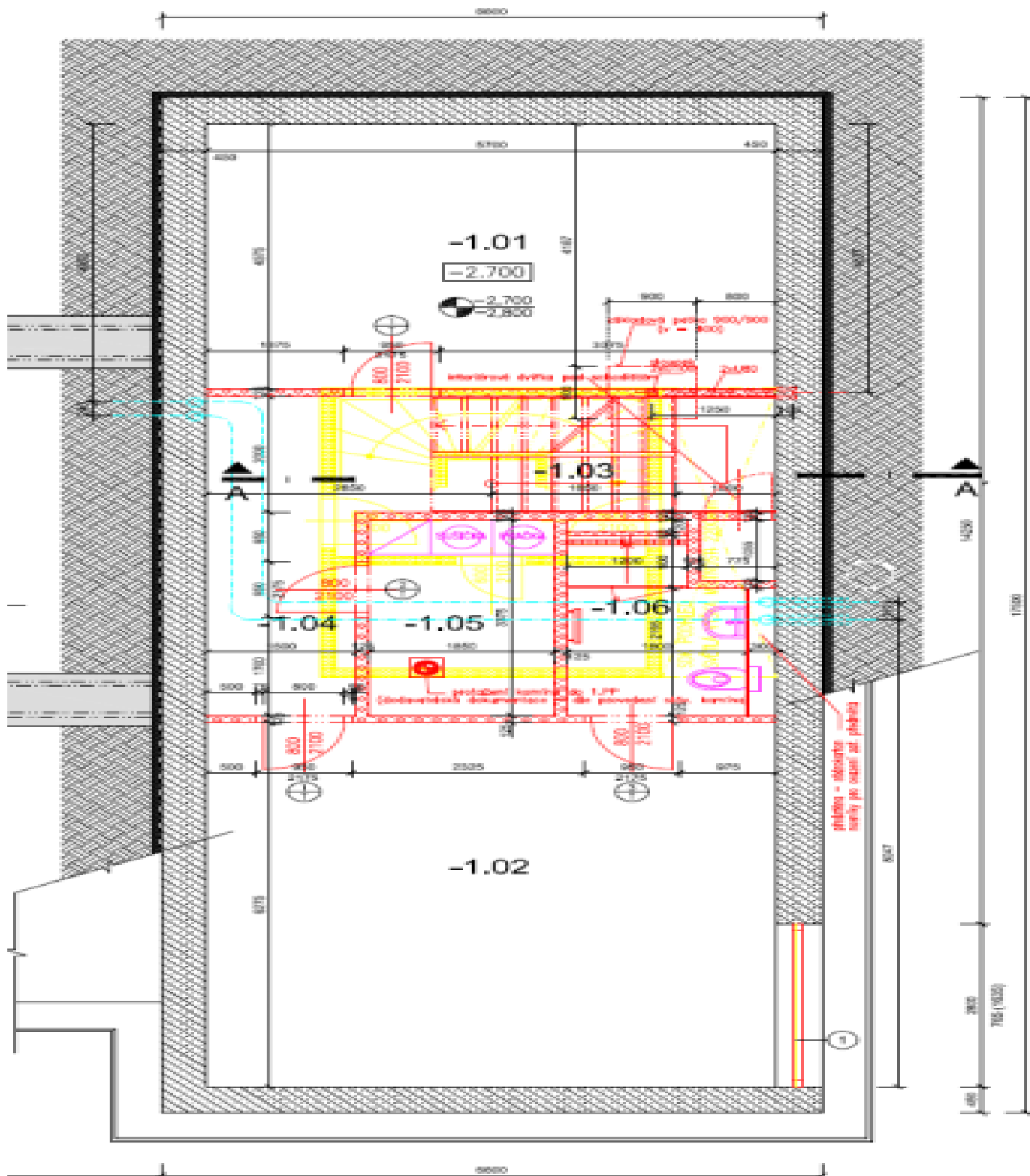
Nice and quiet environment full of greenery, with good access to downtown Prague, close to ISP and Riverside international schools. Nearby is a kindergarten and elementary school, Kodymka kids club, several playgrounds and ČVUT sports center.

Usable area 450 m², built-up area 170 m², garden 577 m², plot 747 m².

House Six-bedroom (7+1)

Ask for price

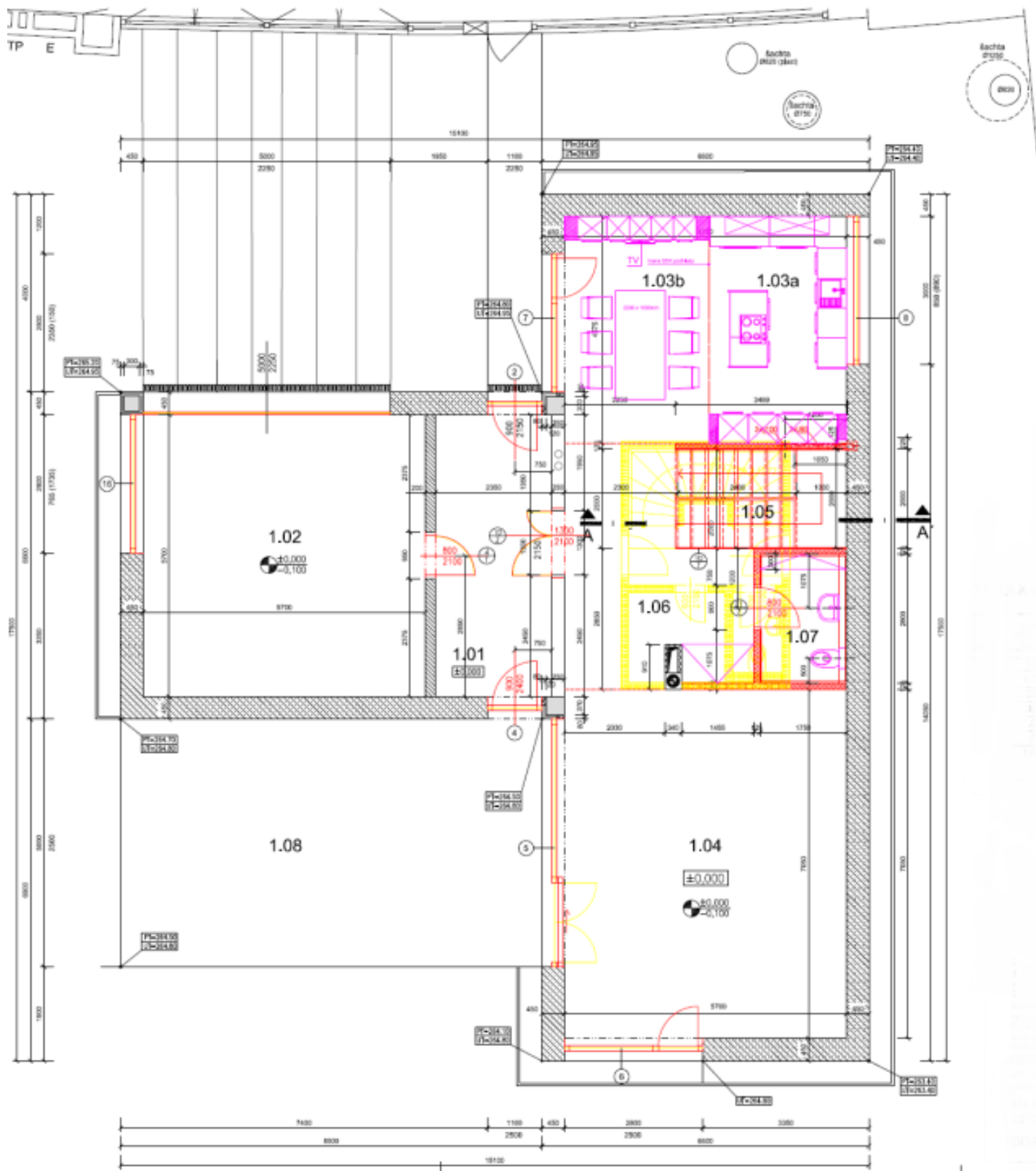
450 m², Prague 6, Dejvice



House Six-bedroom (7+1)

Ask for price

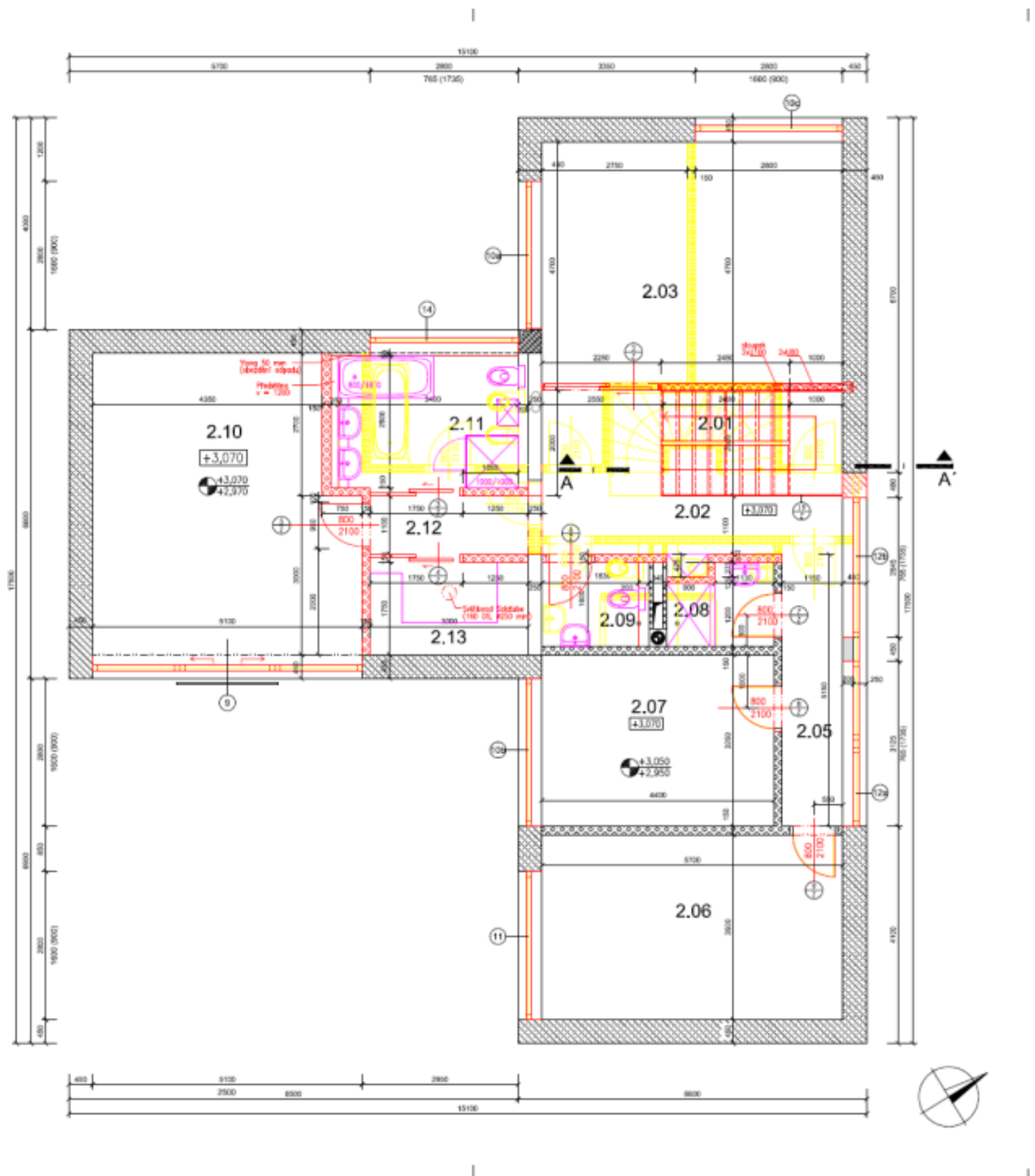
450 m², Prague 6, Dejvice



House Six-bedroom (7+1)

Ask for price

450 m², Prague 6, Dejvice



House Six-bedroom (7+1)

Ask for price

450 m², Prague 6, Dejvice

