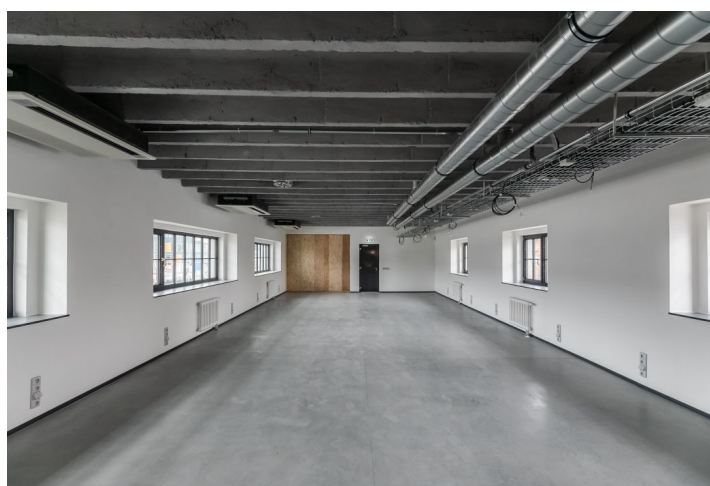
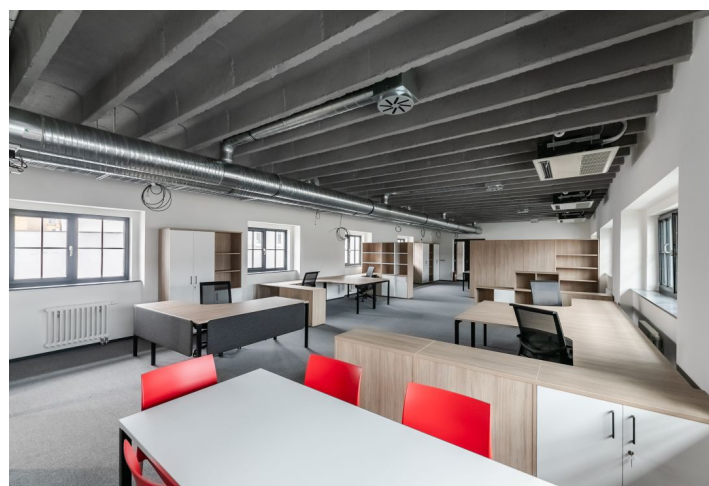


## Office building

Rented

Prague 9, Vysočany, Podkovářská



## Office building

**Rented**

Prague 9, Vysočany, Podkovářská

Service price	7 000 CZK monthly
Total building area	2 000 m <sup>2</sup>
Tenant consumption	—
Parking	2 500 CZK
Parking service charges	—
Parking ratio	—
Certification	—
PENB	C
Reference number	24061

**The reconstruction and completion of Building A in the 1934 Industrial Area will offer variable office space for rent.**

The aim of the redevelopment is to create an area that will concentrate on the existing building structure of the former industrial buildings various functions of administration, services, non-disturbing small production and its distinctive architectural form of industrial development will commemorate the original genius loci of the locality affected by the change of land use after the extinction of the former ČKD. The repaired object will be rented as an office, service facility or small plant. Among other things there is also a gallery and a two-story corner villa suitable e.g. for a restaurant.

**Location:**

Good accessibility via busy Poděbradská street, at the Podkovářská tram stop. Liben Train Station and Kolbenova Metro Station (line B) are within a 10-minute walk. Outdoor parking is available directly on site.

**Facilities and services:**

High room variability  
Open office layout  
Heating  
Cooling  
Ventilation  
Lighting  
Data networks in line with current technical requirements  
Inner blinds  
Floor boxes  
Cast concrete surface  
Social facilities  
Kitchens  
Passenger lifts, freight elevator

Rental and service charges listed without VAT. Lessee pays no commission.

