

Apartment Five-bedroom (6+kk)

Rented

297 m², Prague 1, Josefov, Pařížská



Apartment Five-bedroom (6+kk)

Rented

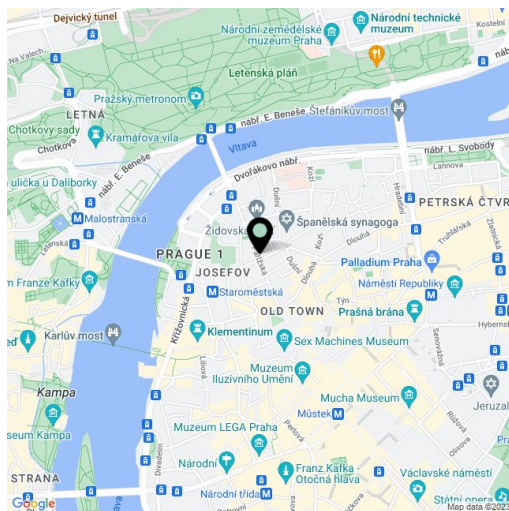
297 m², Prague 1, Josefov, Pařížská

Total area	322 m²
Floor area*	297 m²
Terrace	25 m²
Parking	-
Cellar	-
PENB	D
Reference number	24038
Available from	Immediately

Extraordinary unfurnished luxurious three-level attic flat with a roof terrace, designed by Rostislav Černík and Ivana Dombková from the renown I.D.Arch studio, set on one of the most prestigious addresses in Prague. This completely refurbished 5-bedroom 5-bathroom flat on the sixth-eighth floor of a meticulously reconstructed stately Art Nouveau building with lift, in the heart of the historic center, within instant reach of luxury boutiques, shops and restaurants. Located a few minutes from the Old Town Square and the Vltava riverbank, within easy reach of most Prague historic sights.

The conservative interior, laid out on three levels, includes a double height living room with a fully fitted kitchen and dining area with a dining table for ten (total of 105 m²), five bedrooms - one of them designed as a gallery overlooking the living area, five bathrooms, a guest toilet, and entrance hall. The fourth floor features a 24 m² roof terrace enjoying wonderful panoramic views of Prague.

Air-conditioning, solid wood floors, tiles, lots of built-in wardrobes and storage, wooden windows, curtains, roller blinds, alarm, video entry phone. Common building charges CZK 15,000/month. Electricity will be transferred to the tenant. The apartment is offered **unfurnished**. Available from **July 2022**.

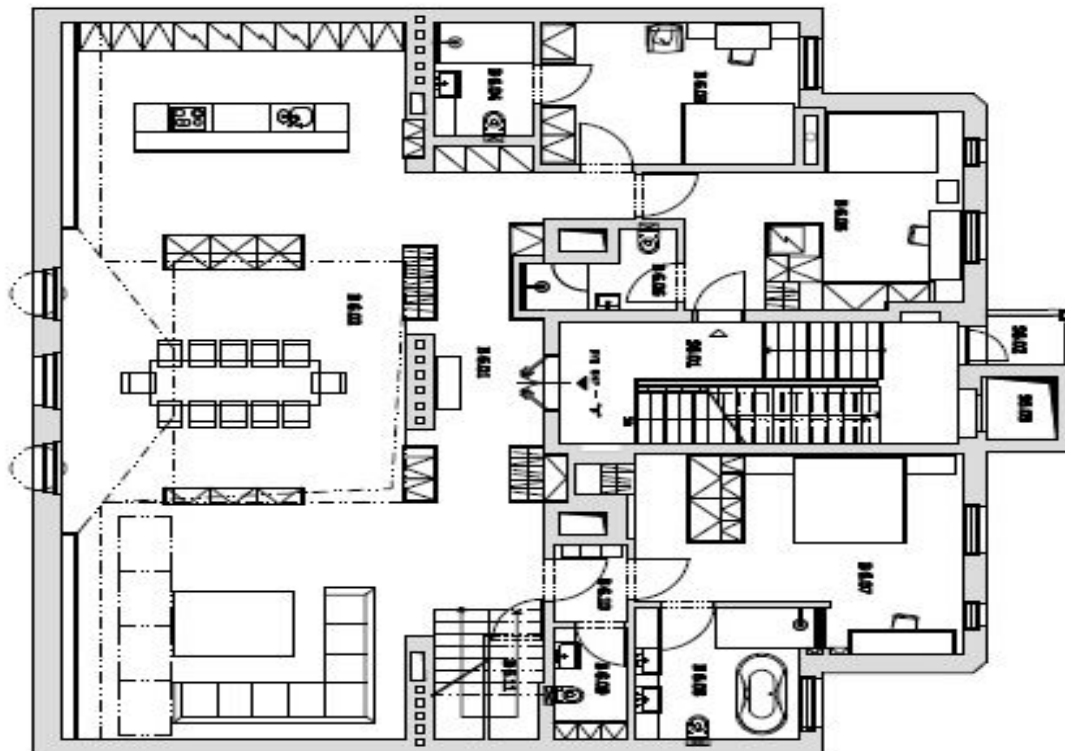


* Area of the unit according to the Civil Code. The area consists of the sum total area of the entire unit bounded by perimeter walls.

Apartment Five-bedroom (6+kk)

Rented

297 m², Prague 1, Josefov, Pařížská



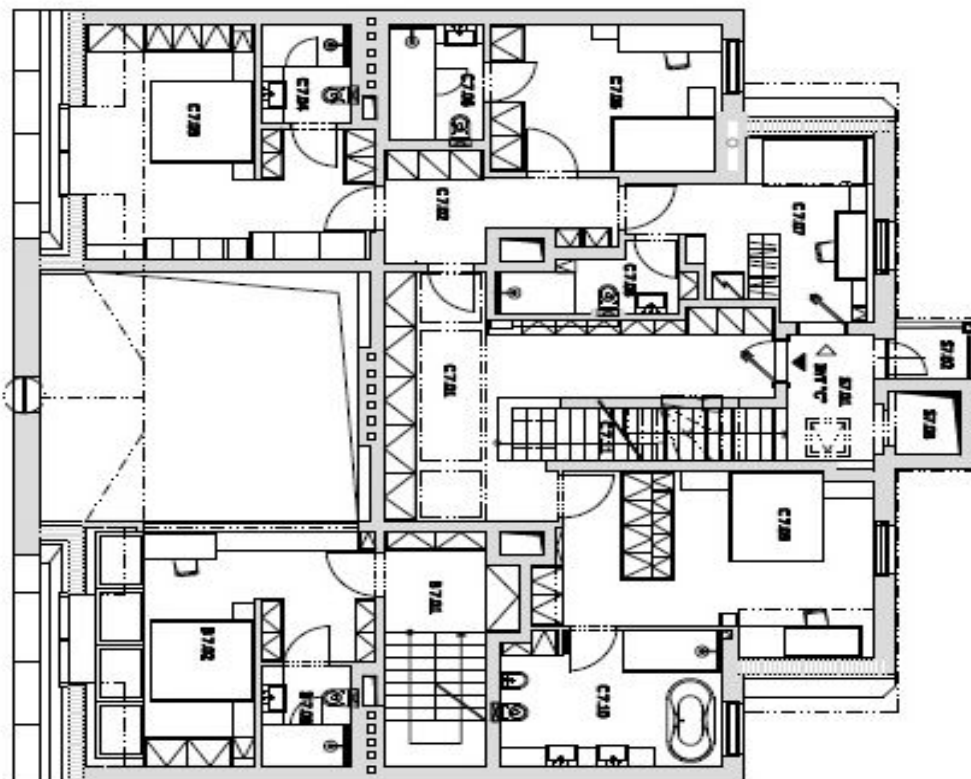
PŮDORRYS 6.NP

Č	Název	m ²
SPOLÉČNÉ PROSTORY		CELKEM 24,9
B.6.01	SOCHODSTĚ	18,9
B.6.02	LODŽIE	2,5
B.6.03	VÝTĚH	1,8
BRŮTTO NP "P"		CELKEM 24,9
B.6.01	CHODBA + SOCHODSTĚ	28,0
B.6.02	OBŮV. POKOJ + KUCHYŇE + JIDELNA	105,2
B.6.03	LODŽIE	14,9
B.6.04	KOUPELNA + WC	4,8
B.6.05	LODŽIE + CHODBA	19,7
B.6.06	KOUPELNA + WC	8,8
B.6.07	LODŽIE + BÁTVA	29,8
B.6.08	KOUPELNA + WC	9,0
B.6.09	WC	8,5
B.6.10	CHODBA	2,4
B.6.11	TECHNICKÁ NĚKOST	2,2

Apartment Five-bedroom (6+kk)

Rented

297 m², Prague 1, Josefov, Pařížská



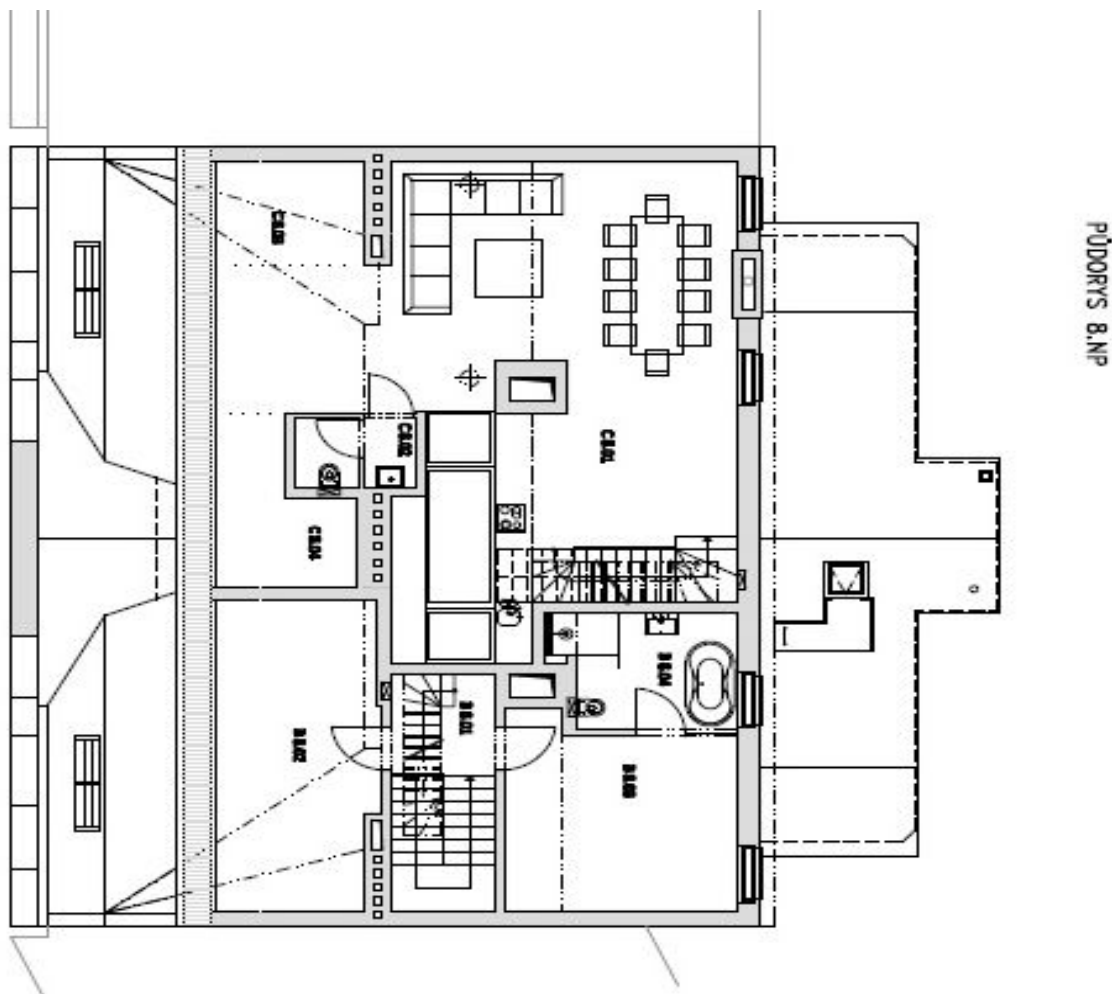
PŮDORIS 7.NP

Č.	Název	m ²
SPOLÉČNÉ PROSTORY		CELKEM 144,4
S7.01	SKLADISŤE + PODSTATA	18,3
S7.02	LODŽIE	2,9
S7.03	VÝTAH	1,8
BRŤ NP "B"		CELKEM 87,9
B7.01	SKLADISŤE + SÁTKOVA	11,3
B7.02	LODŽIE	22,2
B7.03	KOUPELNA + WC	3,9
BRŤ NP "C"		CELKEM 185,3
C7.01	CHODBA	28,0
C7.02	CHODBA	8,8
C7.03	LODŽIE	21,5
C7.04	KOUPELNA + WC	3,9
C7.05	LODŽIE	14,3
C7.06	KOUPELNA + WC	4,8
C7.07	POKOJ	18,6
C7.08	KOUPELNA + WC	4,6
C7.09	LODŽIE + SÁTKOVA	29,0
C7.10	KOUPELNA + WC	12,8
C7.11	SKLADISŤE	5,2

Apartment Five-bedroom (6+kk)

Rented

297 m², Prague 1, Josefov, Pařížská

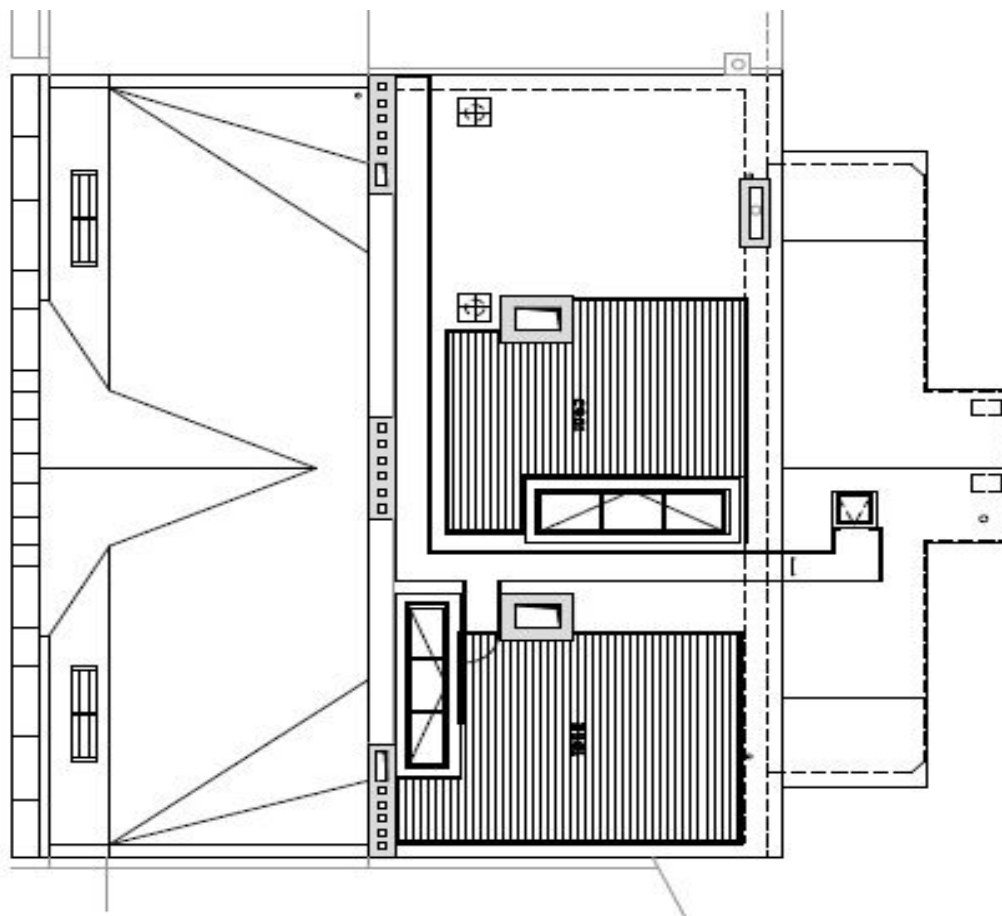


Č	Název	m ²
BYT 8NP "B"		CELKEM 44,9
B.8.01	CHODBA	4,4
B.8.02	SKLAD - ŠATNA	20,5
B.8.03	LOŽNICE	11,7
B.8.04	KOUPELNA + WC	8,3
BYT 8NP "C"		CELKEM 42,9
C.8.01	OBYV. POKOJ + KUCHYŇE + JÍDELNA	71,3
C.8.02	WC	3,5
C.8.03	SKLAD ŠATNA	4,5
C.8.04	SKLAD ŠATNA	7,7

Apartment Five-bedroom (6+kk)

Rented

297 m², Prague 1, Josefov, Pařížská



PUDORYS 9.NP – STŘECHA, TERASY

Č	NÁZEV	m ²
B.1	BYT 5NP 'B'	
B.2	TERASA	24,8
B.3	BYT 5NP 'C'	
B.4	TERASA	20,8