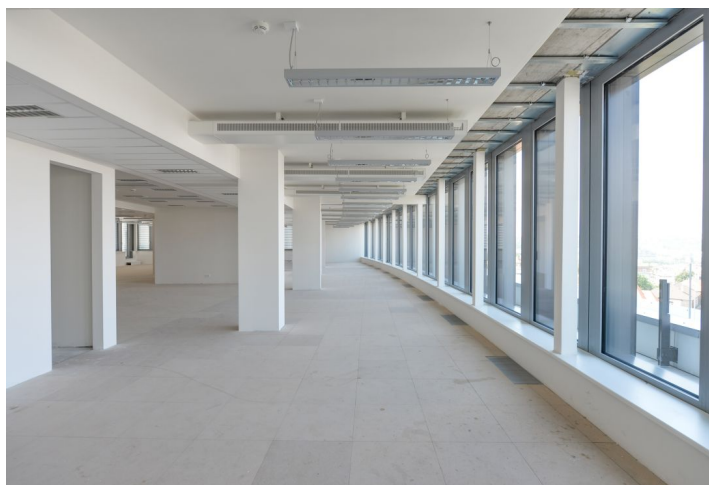
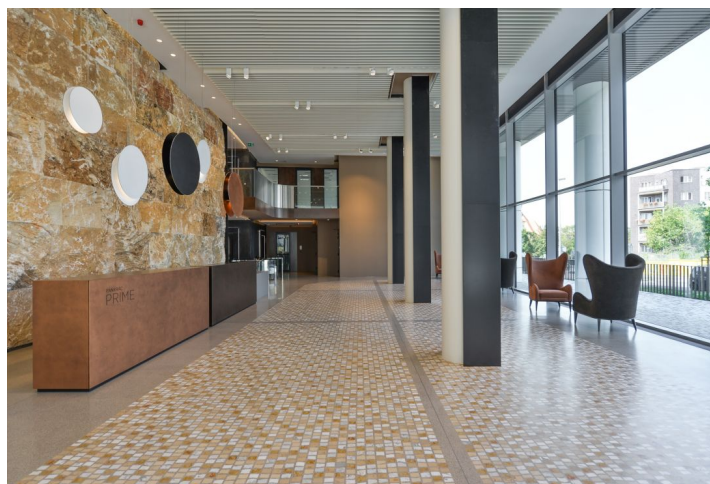


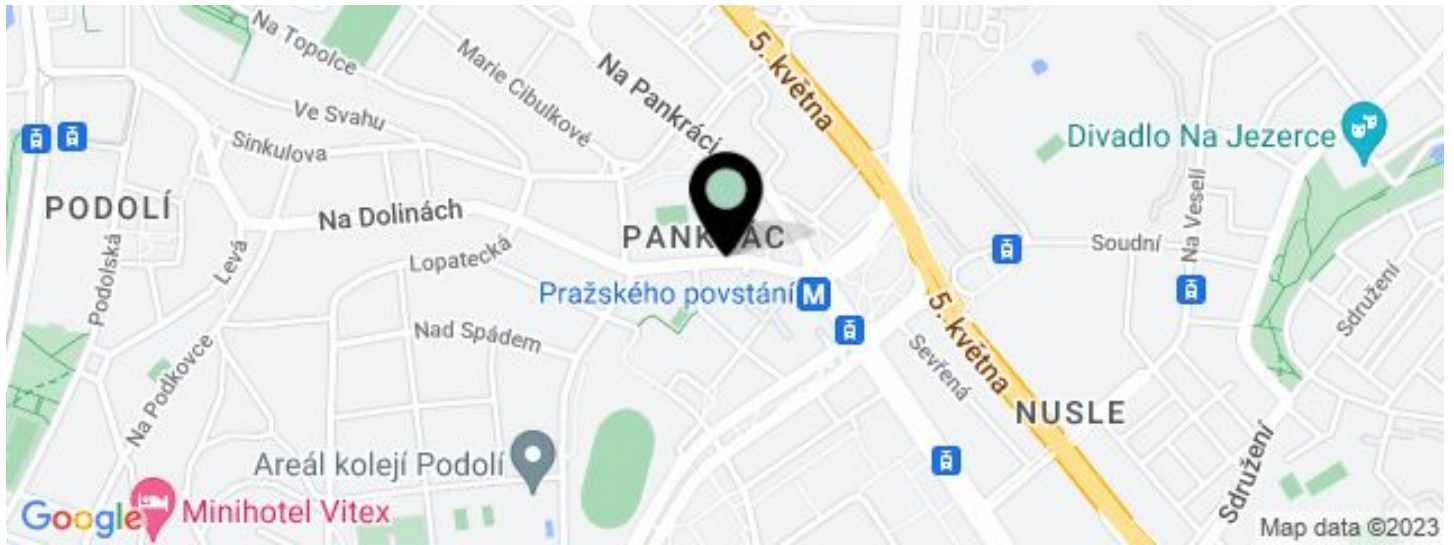
Office building

€ 15.75 / m<sup>2</sup> | CZK 394 / m<sup>2</sup>

208 m<sup>2</sup>, Prague 4, Nusle, Lomnického



## Office building

€ 15.75 / m<sup>2</sup> | CZK 394 / m<sup>2</sup>208 m<sup>2</sup>, Prague 4, Nusle, Lomnického

UNIT	AVAILABLE AREA	SERVICES	PARKING	MONTHLY RENT
Office space, 5th floor	208 m <sup>2</sup>	185 CZK monthly per m <sup>2</sup>	EUR 110 / ps / month	€ 15.75 / m <sup>2</sup>

## Office building

€ 15.75 / m<sup>2</sup> | CZK 394 / m<sup>2</sup>208 m<sup>2</sup>, Prague 4, Nusle, Lomnického

Service price	185 CZK monthly per m <sup>2</sup>
Total building area	7 778 m <sup>2</sup>
Tenant consumption	—
Parking	110 EUR
Parking service charges	—
Parking ratio	—
Certification	—
PENB	A
Reference number	23827

**New administrative building offering modern, highly flexible office space, retail space and restaurant with garden. The exterior and interior were designed by Mimolimit and architect / designer Barbora Škorpilová. The offices, boasting beautiful panoramic views of Prague and terraces on the top floors, meet the highest international quality standards.**

### Location:

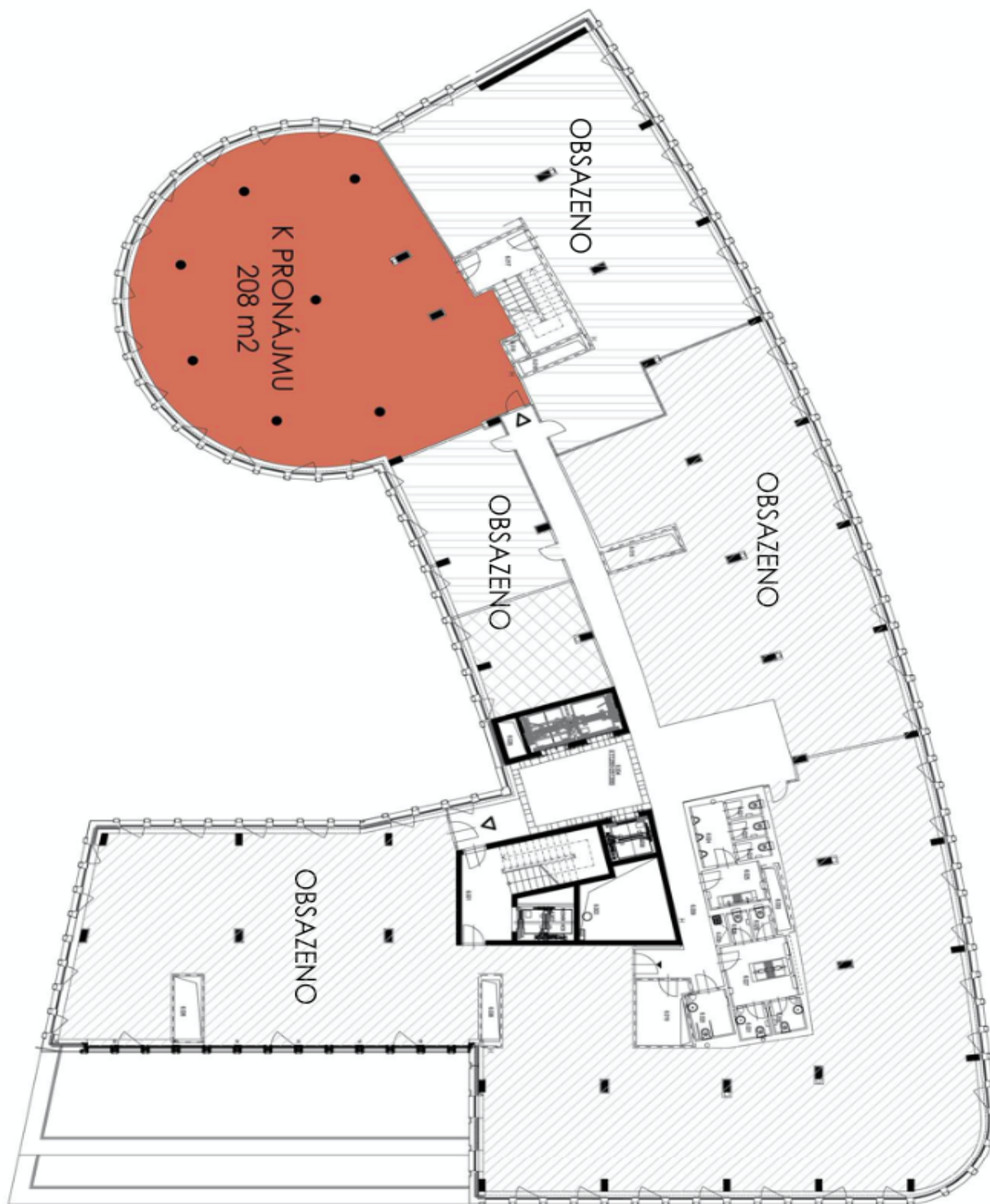
The building is located in the vicinity of the Pražského povstání metro station (line C), tram and bus stops. Easy access to the D1 highway and the Prague Ring. The Arkady Pankrac shopping center provides all amenities and is just a 10-minute walk.

### Features and Services:

Representative reception desk  
Impressive entrance hall with a gallery  
Magnetic card entrance system  
Security service 24/7  
5 elevators  
Terraces on the top floors  
Air-conditioning  
Suspended ceilings  
Openable windows  
Raised floors  
Kitchenette in each unit  
Showers  
Restaurant on the ground floor  
Underground parking

Rental and service charges listed without VAT. Lessee pays no commission.

6NP



5NP

