

Office space

Ask for price

Plzeň-sever, Nýřany, U Mexika



Office space

Ask for price

Plzeň-sever, Nýřany, U Mexika

Available area	600 m ²
Cellar	-
Parking	Yes
PENB	B
Reference number	23504

600 sq.m. of office premises for lease in an industrial park located 12 km from Plzeň's city center. The project consists of 5 warehouse buildings; construction of this park commenced in 2007.

Location:

The park is situated close to exit 93 on D5 highway (Prague – Plzeň – Germany). The park is reachable by public transport. The Nýřany train station is approx. 2,5 km from the park.

Features and Services:

- All infrastructure available in the area
- In the area are allowed trucks of any total weight
- High standards of buildings

Warehouse/Industrial premises:

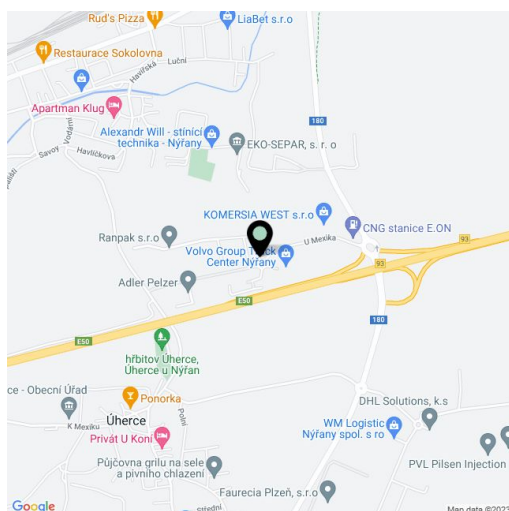
- Min.1 loading dock per 1 000 sq.m
- Floor loading capacity 5 T/sq.m
- Clear height 10 m
- 35 m truck yard
- Column grid structure 24x12 m
- Sprinkler system

Office:

- with flexible layout
- Air-conditioning

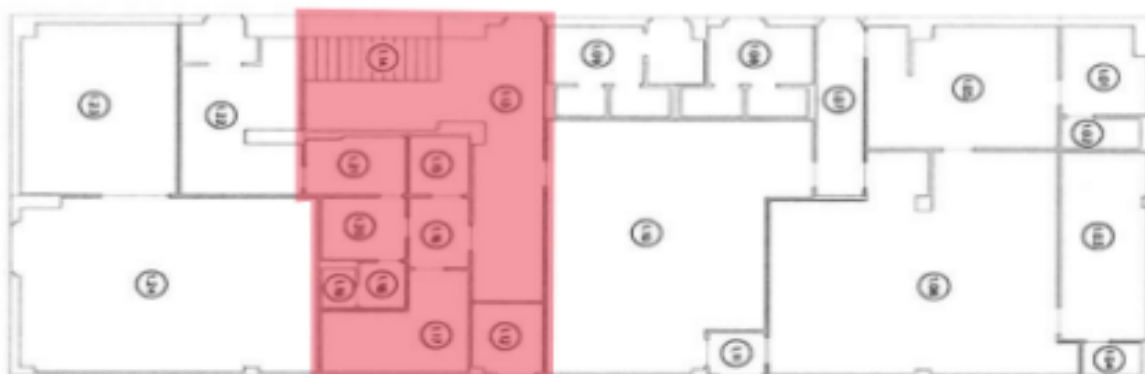
Available from 7/2025.

Rental and service charges listed without VAT. Lessee pays no commission.



Plzeň-sever, Nýřany, U Mexika

Ground floor (1NP)



First floor (2NP)



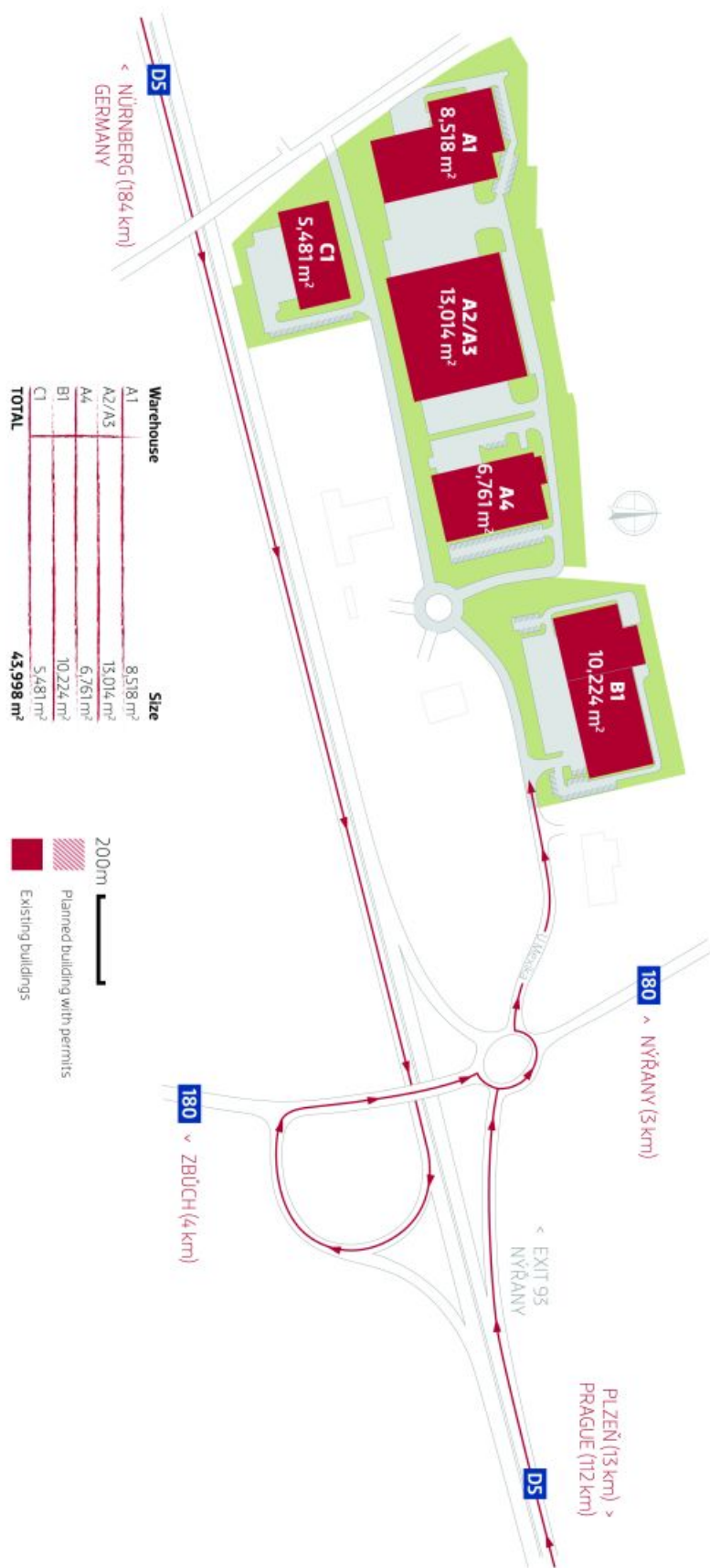
Second floor (3NP)



Office space

Plzeň-sever, Nýřany, U Mexika

Ask for price



Office space

Plzeň-sever, Nýřany, U Mexika

Ask for price

