

House Seven-bedroom (8+1)

Sold

322 m², Prague 10, Petrovice



House Seven-bedroom (8+1)

Sold322 m², Prague 10, Petrovice

Plot	928 m ²
Foot print	121 m ²
Garden	807 m ²
Parking	Garage
Garage	Yes
Cellar	Yes
PENB	G
Reference number	23036

Quiet village living, yet still in Prague within easy reach of services and public transport -- all this and more can be found in this spacious house with a terrace, green views, and a maintained garden with a swimming pool.

The house, built on a sloping plot, offers a total of 3 floors. The ground floor rooms with direct access to the garden feature truly generous rooms: a workshop, a gym, a cellar and a technical room. From the spacious hall on the ground floor, there is an entrance to the **living room with terrace access**, where you can enjoy tranquil bird songs. The kitchen is connected to the dining room, there is a quiet **study corner**, and a **separate toilet**. The first floor (2nd level) has **3 bedrooms**, another **study** overlooking a church tower and **two spacious bathrooms** with windows. The attic provides a large storage space. There is also a small atmospheric **room with a partly covered terrace**.

Equipment includes **wooden parquet floors**, ceramic tiling and floor tiles, veneered interior doors, simple wooden windows and Velux wooden roof windows. Heating is provided by a gas boiler and a backup pellet boiler, water is heated by a boiler.

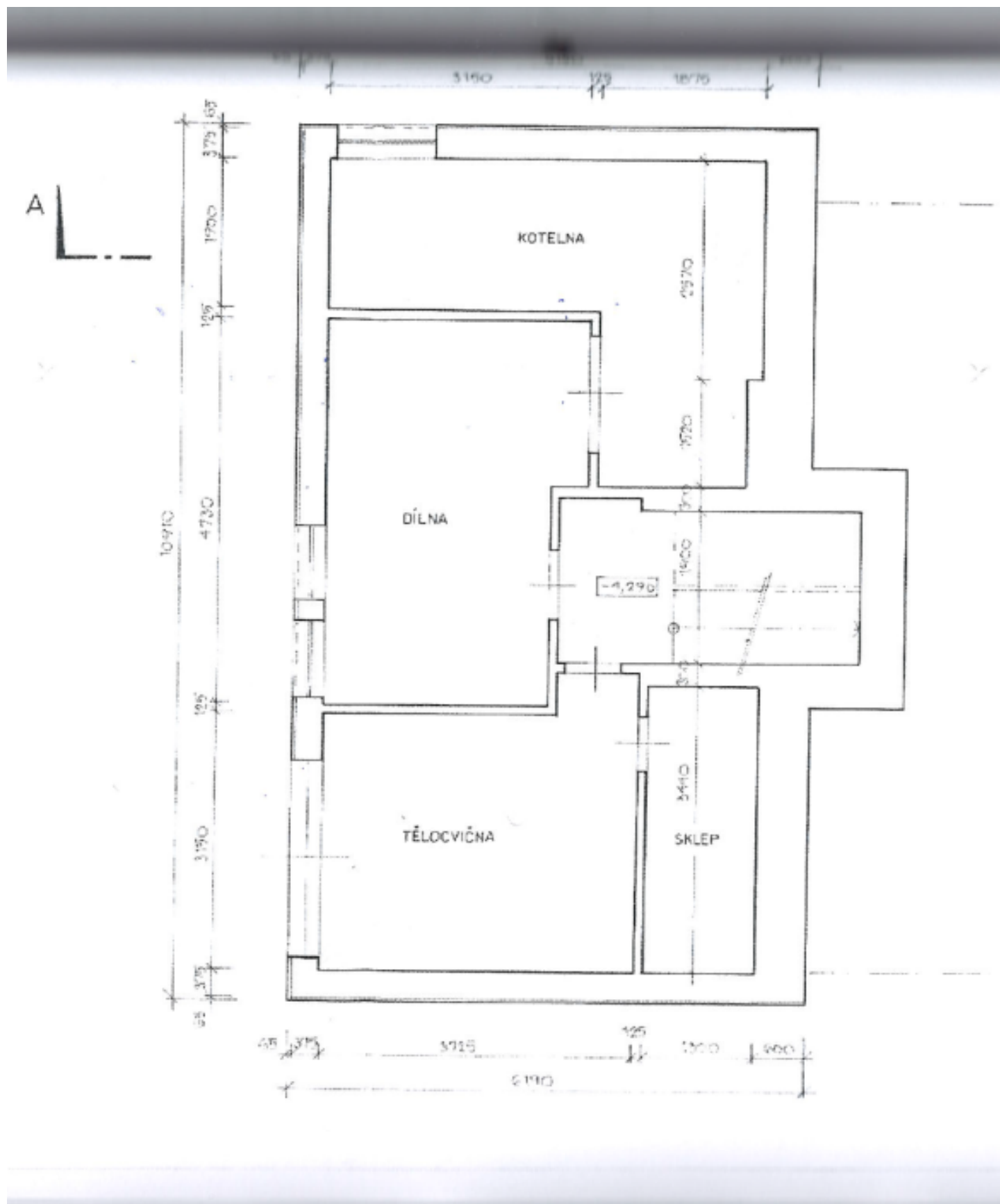
The white house, oriented to the southwest, is the dominant of a quiet alley in a residential area of **Prague 10** in the village of **Petrovice**, with its origins dating back to the Middle Ages. Just a few steps to the forest and the **Hostivař Dam**. The location has good access to the **Háje metro station** and the **D1** motorway. A kindergarten, an elementary school and gymnasium are all within walking distance, nearby you can also find a medical facility and a supermarket. Sports lovers will appreciate running and walking trails and a nearby sports center with minigolf, tennis courts and a playground.

Interior 322 m², built-up area and courtyard 121 m², garden 807 m², land 928 m².

House Seven-bedroom (8+1)

Sold

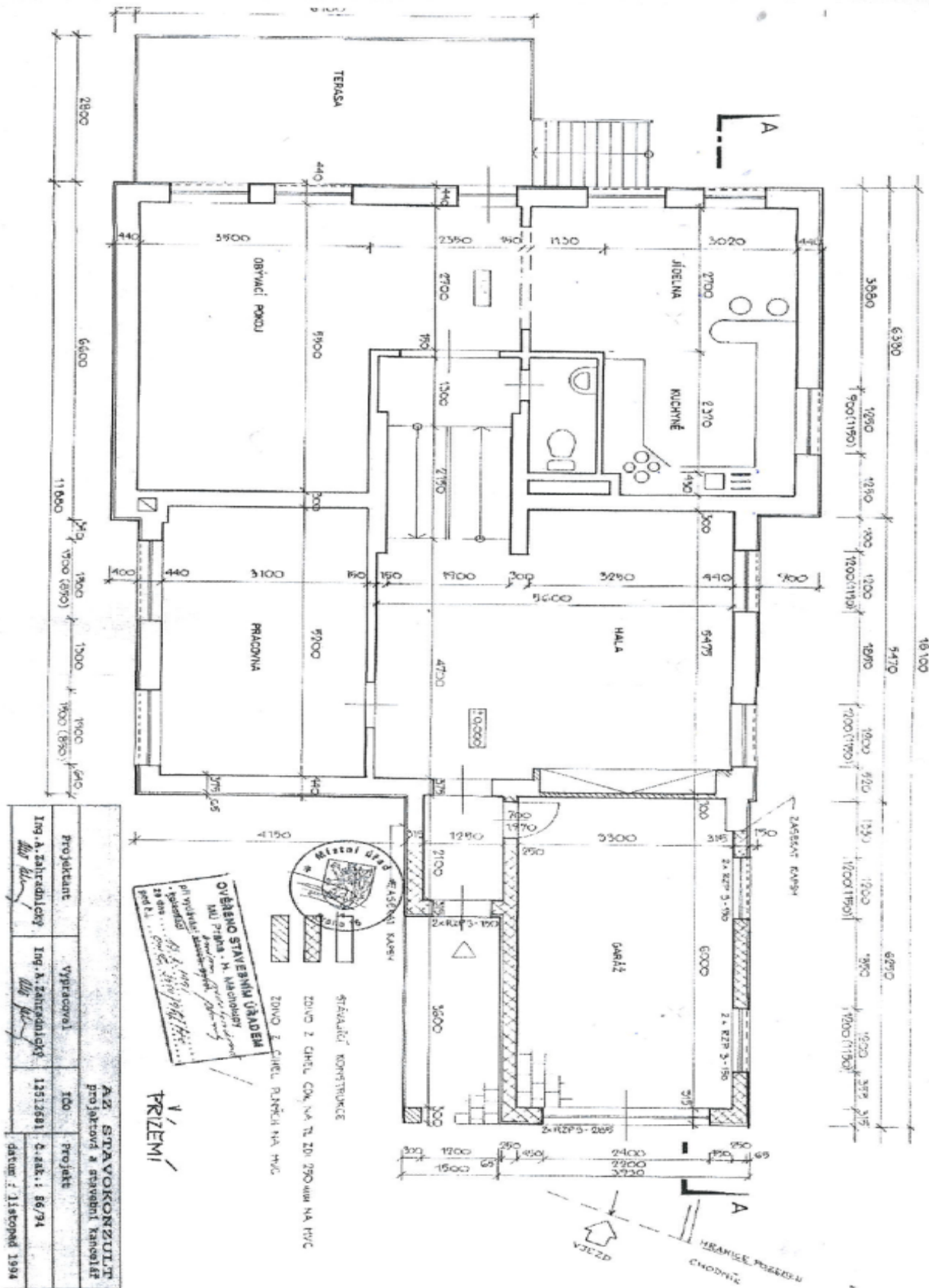
322 m², Prague 10, Petrovice



House Seven-bedroom (8+1)

Sold

322 m², Prague 10, Petrovice

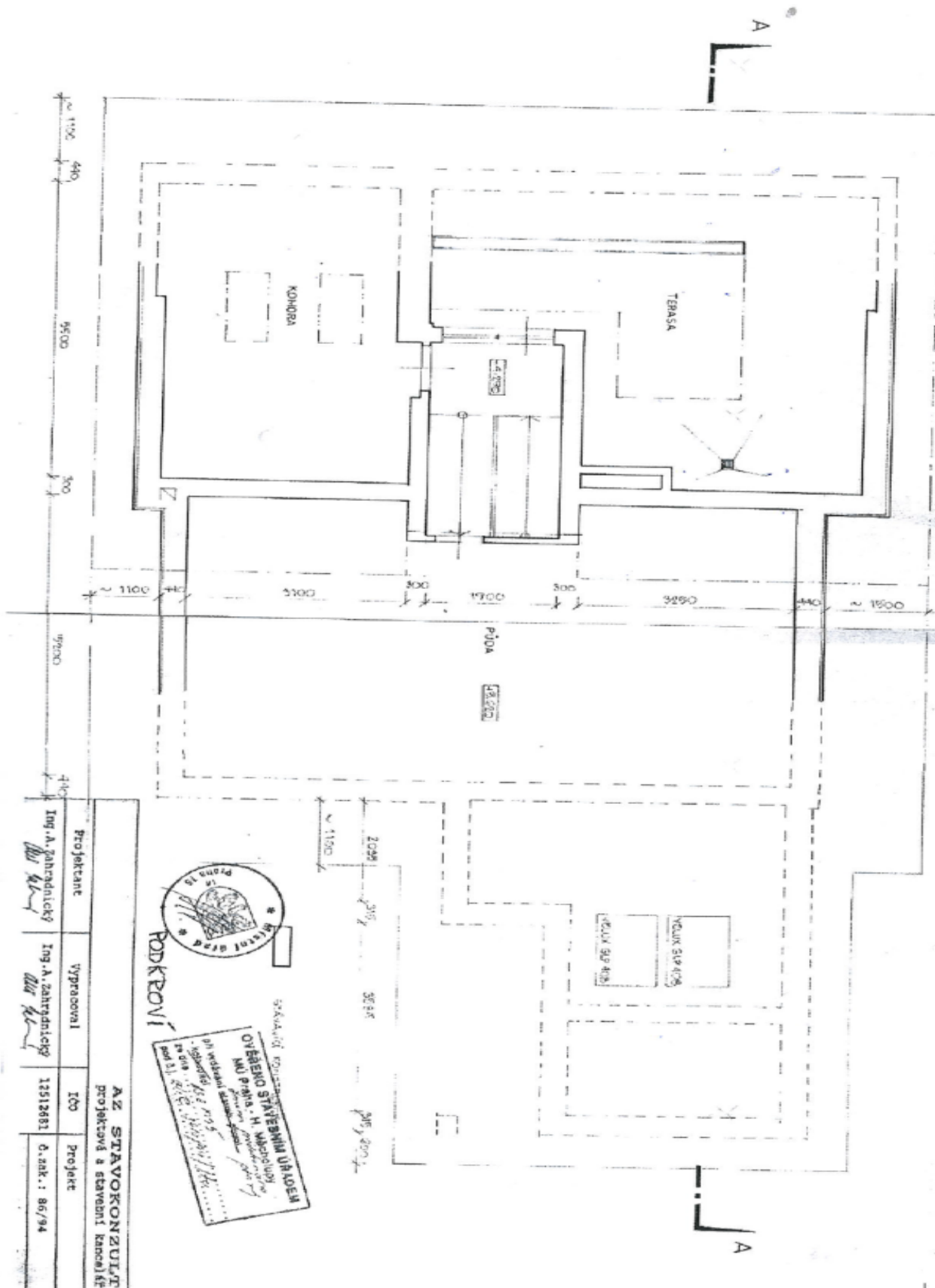


projektant	vypročoval	ICO	projekt
Ing. A. Zahradnický	Ing. A. Zahradnický	12512681	č. zpr.: 86/74
AZ STAVOKONZULT projektová a stavební kancelář			
datum: 7. listopad 1994			

House Seven-bedroom (8+1)

Sold

322 m², Prague 10, Petrovice



Projektant	Ing. A. Zahradnický
Vypracoval	Ing. A. Zahradnický
ICO	12512651
Projekt	č. sárk.: 86/94

