

## Apartment One-bedroom (2+1)

Rented

74 m<sup>2</sup>, Prague 2, Vinohrady, Slavíkova



# Apartment One-bedroom (2+1)

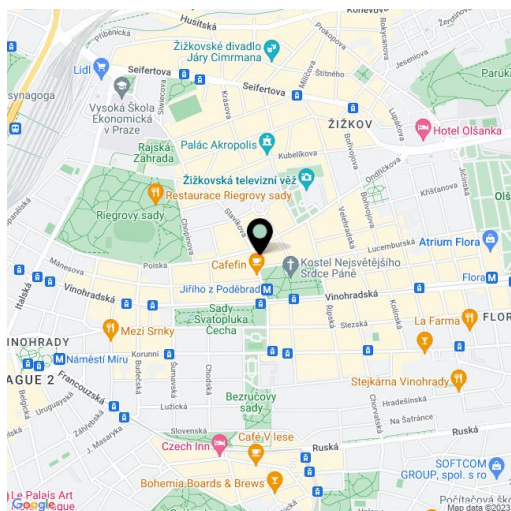
**Rented**74 m<sup>2</sup>, Prague 2, Vinohrady, Slavíkova

Total area	74 m <sup>2</sup>
Parking	-
Cellar	-
PENB	G
Reference number	23034
Available from	Immediately

Completely refurbished furnished 1-bedroom flat on the fourth floor of a fully renovated historic building with a lift and nicely preserved original details. Great location in the popular residential neighborhood of Vinohrady with full amenities within easy reach. Just moments from the Riegrovy sady park, and a few min. walk from Jiřího z Poděbrad Square with a metro station, tram stop, trendy bistros, restaurants, cafes and a popular regular fresh produce market.

The comfortable interior includes a courtyard facing bedroom with lots of built-in wardrobes, a spacious living room, a fully fitted eat-in kitchen, a shower room with a toilet and a bidet shower, and a central entrance hall with built-in storage.

New kitchen, **solid wood parquet floors**, tiles, dishwasher, microwave oven. Service charges, heating and water bills: approx. CZK 3000 per month. Electricity is billed separately. Can be rented unfurnished at CZK 21900 per month.



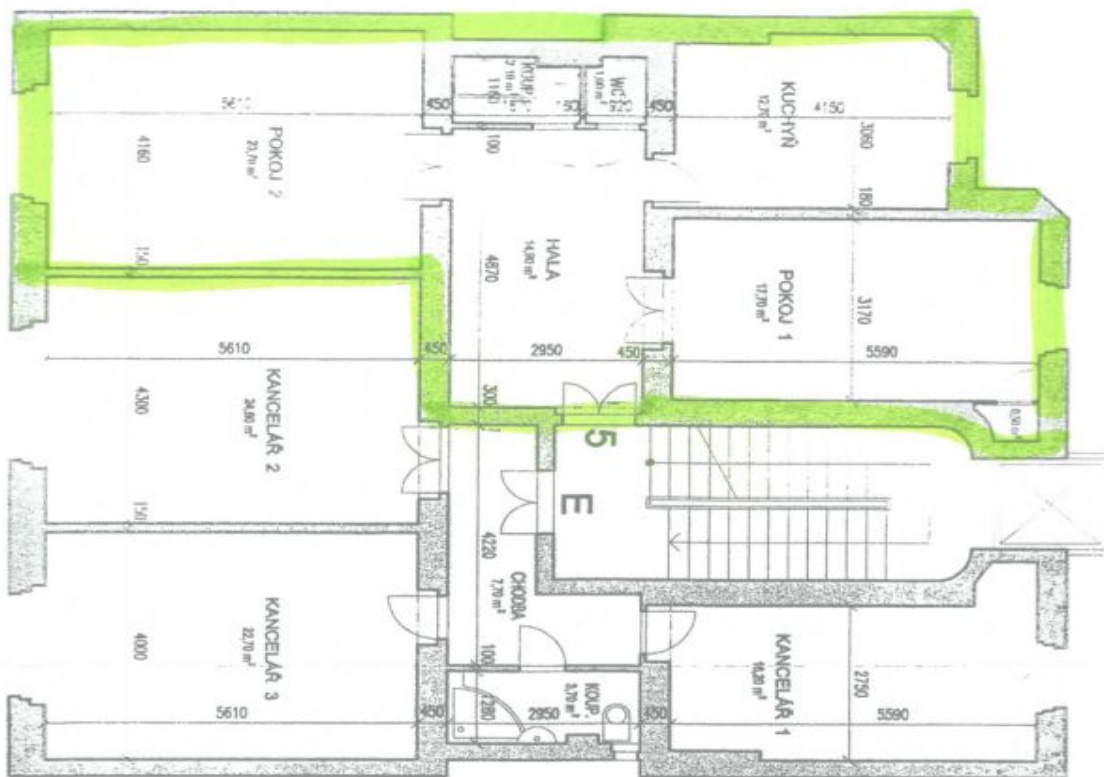
\* Area of the unit according to the Civil Code. The area consists of the sum total area of the entire unit bounded by perimeter walls.

# Apartment One-bedroom (2+1)

Rented

74 m<sup>2</sup>, Prague 2, Vinohrady, Slavíkova

5.NP



KANCELÁŘE E	
KANCELÁŘ 1	18,20 m <sup>2</sup>
KANCELÁŘ 2	24,60 m <sup>2</sup>
KANCELÁŘ 3	22,70 m <sup>2</sup>
CHODBA	7,70 m <sup>2</sup>
KOUPELNA	3,70 m <sup>2</sup>
<b>UŽITNÁ PLOCHA</b>	<b>74,90 m<sup>2</sup></b>
<b>CELKOVÁ PLOCHA</b>	<b>76,00 m<sup>2</sup></b>

BYT 5 (40)	
KUCHYNĚ	12,70 m <sup>2</sup>
POKOUJ 1	17,70 m <sup>2</sup>
SPÍŽ	0,50 m <sup>2</sup>
HALA	14,90 m <sup>2</sup>
WC	1,00 m <sup>2</sup>
KOUPELNA	2,10 m <sup>2</sup>
POKOUJ 2	23,70 m <sup>2</sup>
<b>UŽITNÁ PLOCHA</b>	<b>72,60 m<sup>2</sup></b>
<b>CELKOVÁ PLOCHA</b>	<b>73,80 m<sup>2</sup></b>

UŽITNÁ PLOCHA V 5.NP 147,50 m<sup>2</sup>  
CELKOVÁ PLOCHA V 5.NP 149,80 m<sup>2</sup>