

Apartment Two-bedroom (3+1)

Rented

128 m², Prague 7, Bubeneč, Milady Horákové



Apartment Two-bedroom (3+1)

Rented

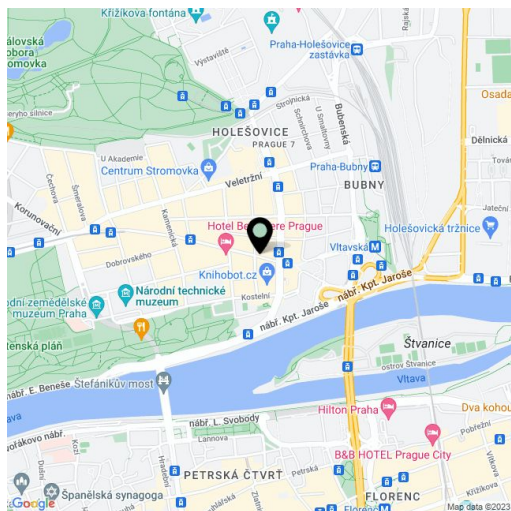
128 m², Prague 7, Bubeneč, Milady Horákové

Total area	131 m²
Floor area*	128 m²
Balcony	3 m²
Parking	-
Cellar	-
PENB	G
Reference number	23020
Available from	Immediately

This air-conditioned furnished 2-bedroom flat with 2 balconies, a fireplace and views of the adjacent Letná Park is situated on the 5th floor of a Functionalist residential building with a lift. Sought after location with a fine selection of cafes, restaurants, bistros, shopping and cultural venues, with very quick access to the city center, just one tram stop from Hradčanská metro station. Convenient to the airport and Prague 6 international schools, within walking distance of Stromovka Park.

The apartment consists of a south-facing living room with a fireplace and large windows, a fully fitted eat-in kitchen, 2 north-facing bedrooms, bathroom with bathtub, walk-in shower, toilet and bidet, an additional separate toilet, and a walk-in closet.

Original solid wood parquet floors, mosaic tiles, new casement windows on the southern side, original casement windows on the northern side, solid wood casing, central heating. Service charges and utilities approx. CZK 4500/month. Electricity will be transferred to the tenant.

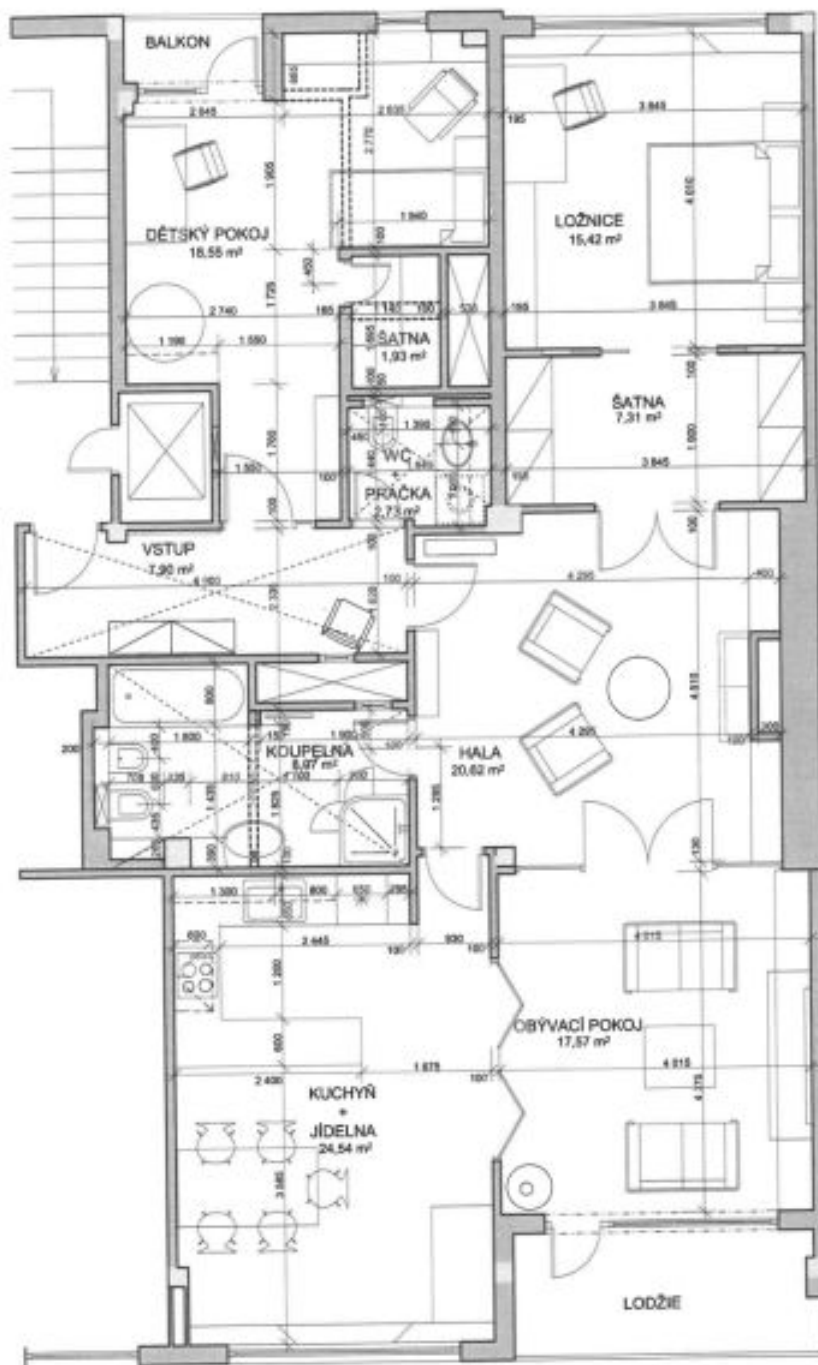


* Area of the unit according to the Civil Code. The area consists of the sum total area of the entire unit bounded by perimeter walls.

Apartment Two-bedroom (3+1)

Rented

128 m², Prague 7, Bubeneč, Milady Horákové



escadra architektura Mělnická 71 121 00 Praha 2 tel: +420 224 01 111 www.escadra.com info@escadra.com	REKONSTRUKCE BYTU ARCHITECTONICKÁ PRÁCE Milady Horákové 88, Praha 7 - Bubeneč, Praha 7, 170 00		číslo AS 01	rok 2024
	autor Ing. arch. Stanislav Holančík	výkres PŮDORYS NÁVRH	měřítko 1:50	