

Office building

Rented

Prague 1, Nové Město, Jungmannova



Office building

Rented

Prague 1, Nové Město, Jungmannova

Service price	49 CZK monthly per m ²
Total building area	390 m ²
Tenant consumption	—
Parking	-
Parking service charges	—
Parking ratio	—
Certification	—
PENB	G
Reference number	23015

The historic Mozarteum building from the architect Jan Kotěra offers commercial space for lease and is situated in the city center, just a few steps from the leafy Franciscan Garden.

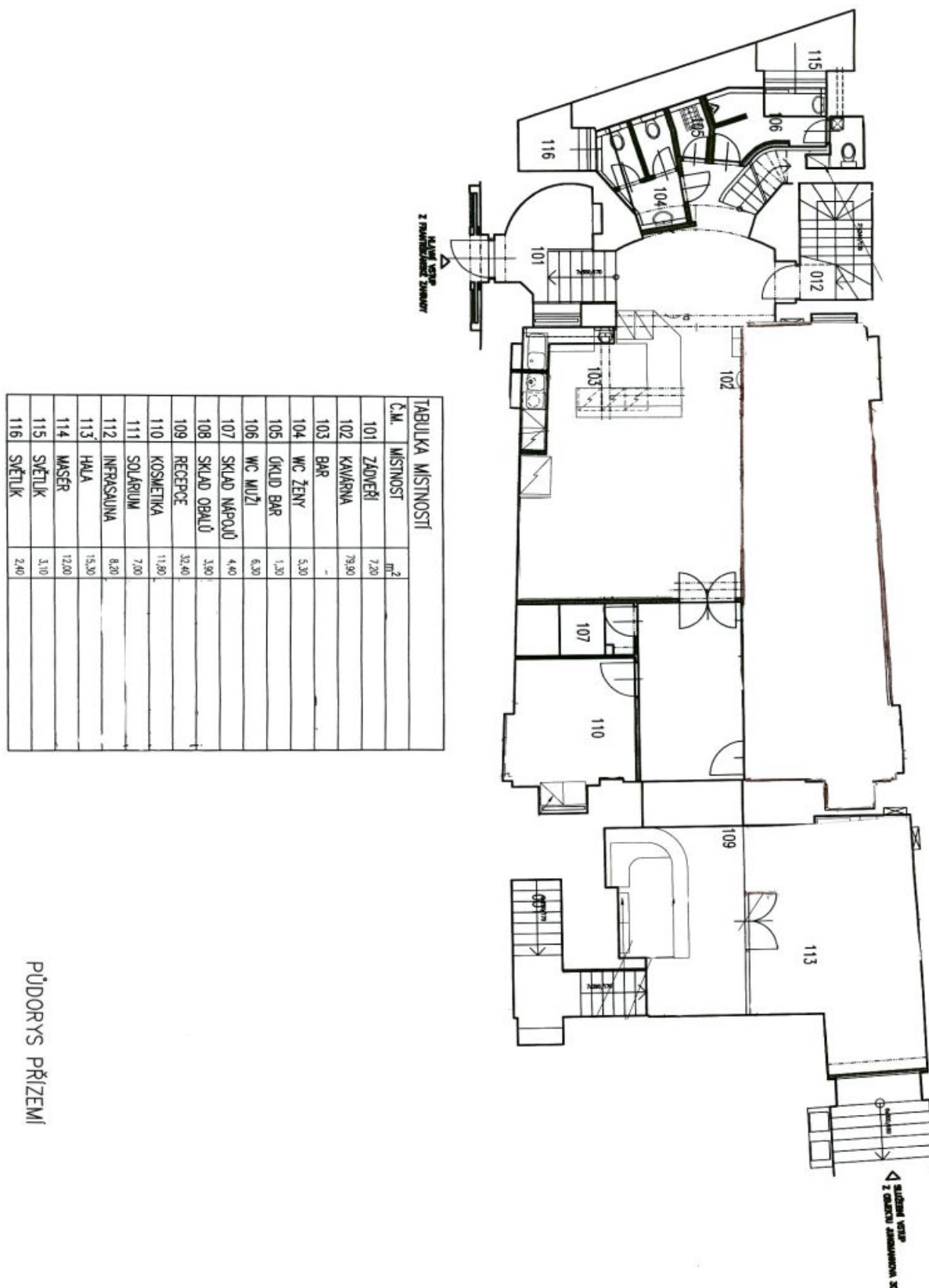
Location:

The building is situated in an attractive location of Prague 1 – in the financial and commercial center. Excellent access by public transport, in close vicinity of the Národní třída metro station (line B), tram line hub and the Můstek metro station (lines A, B).

Features and Services:

- Central reception
- Lift
- Air-conditioning
- Openable windows
- Balcony
- Nice view

Rental price **CZK 424/m²/month**. Rental and service charges listed without VAT. Lessee pays no commission.

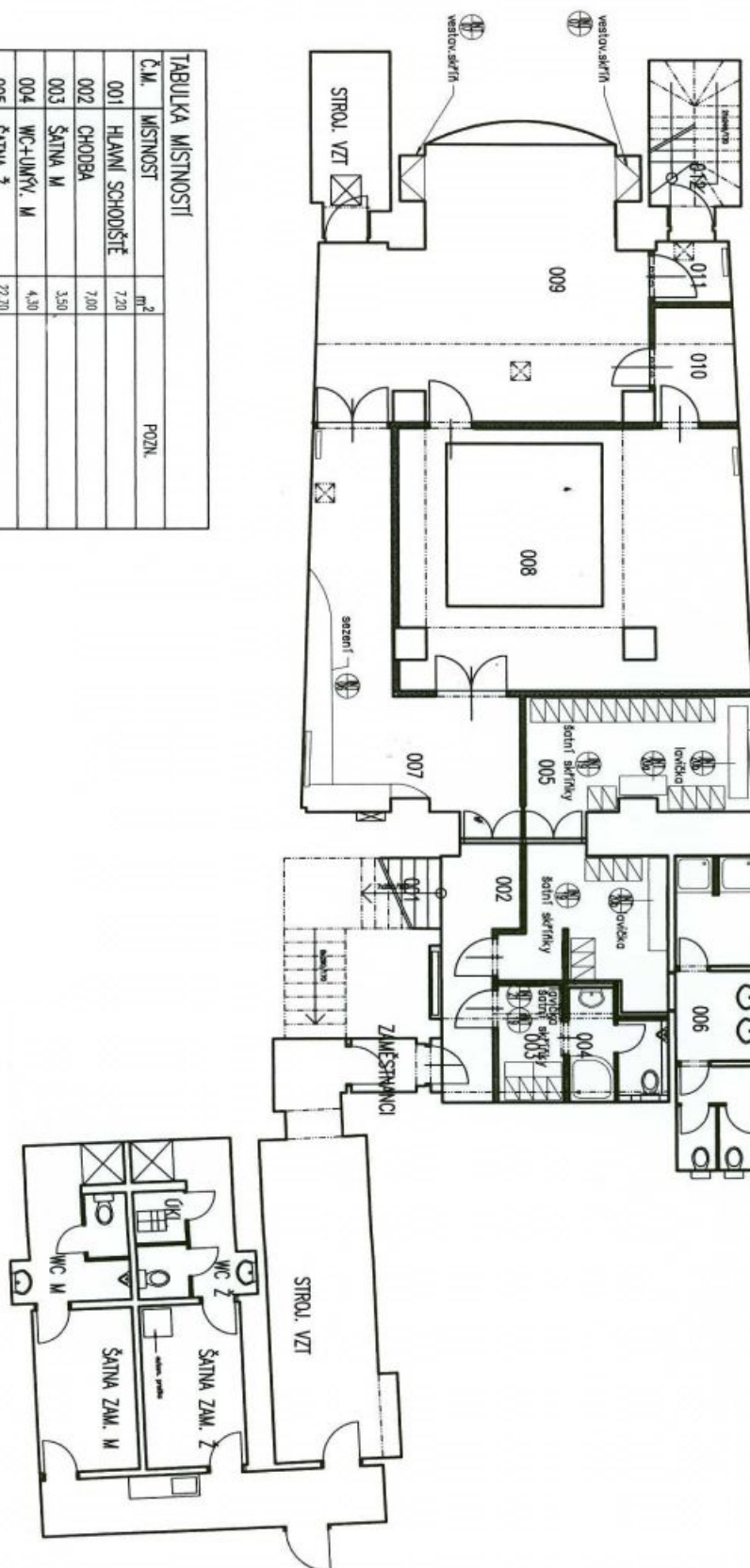


PŮDORYS PŘÍZEMÍ

TABULKA MÍSTNOSTI		
Č.M.	MÍSTNOST	m ²
001	HLAVNÍ SCHODIŠTĚ	7,20
002	CHODBA	7,00
003	ŠATNA M	3,50
004	WC+UMYV. M	4,30
005	ŠATNA Ž	22,20
006	WC+UMYV. Ž	11,20
007	HALA	22,20
008	CVIČEBNÍ SÁL. 1	41,00
009	CVIČEBNÍ SÁL. 2	36,00
010	SKLAD	4,20
011	CHODBA	2,00
012	ÚNIKOVÉ SCHODIŠTĚ	6,10

POZN.

POZNÁMKY:
1. ROZMĚRY JSOU POUZE ORIENTAČNÍ



PŮDORYS SUTERÉNU