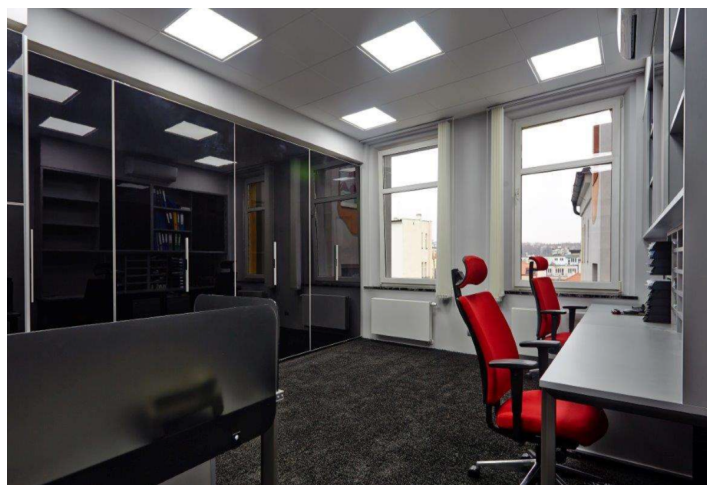


## Office building

€ 17.22 / m<sup>2</sup> | CZK 430 / m<sup>2</sup>

258 m<sup>2</sup>, Prague 1, Nové Město, Na Poříčí



## Office building

€ 17.22 / m<sup>2</sup> | CZK 430 / m<sup>2</sup>258 m<sup>2</sup>, Prague 1, Nové Město, Na Poříčí

|                         |                                    |
|-------------------------|------------------------------------|
| Service price           | 170 CZK monthly per m <sup>2</sup> |
| Total building area     | 3 164 m <sup>2</sup>               |
| Tenant consumption      | —                                  |
| Parking                 | Yes                                |
| Parking service charges | —                                  |
| Parking ratio           | —                                  |
| Certification           | —                                  |
| PENB                    | G                                  |
| Reference number        | 22968                              |

Office space for lease in a renovated building on Na Poříčí street. The premises include a meeting room, kitchenette, two dressing rooms, two storage rooms, social facilities and a spacious terrace with a view of Letná. The entire floor provides maximum privacy and is modernly furnished with a focus on high-quality interiors, including designer furniture and luxurious amenities.

**Location:**

Nearby are the metro stations Náměstí Republiky (line B) and Florenc (lines B and C), which provide fast connections to all parts of Prague. The street is also served by several tram and bus lines. Public paid parking lots and parking houses in the vicinity.

**Features and Services:**

24-hour access  
Reception  
Security  
Lift  
Daily cleaning of common areas  
Administrative and postal services  
Connection to high-speed internet, telephone lines and other additional services  
Office cleaning services

Rent and service charges are listed without VAT. Lessee pays no commission.

