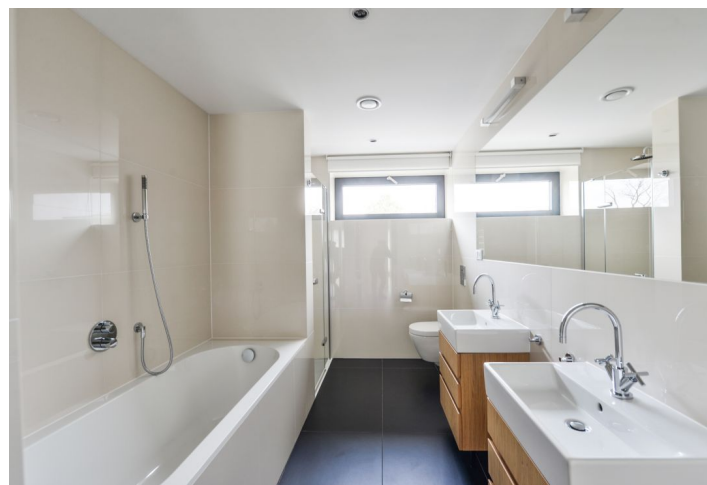
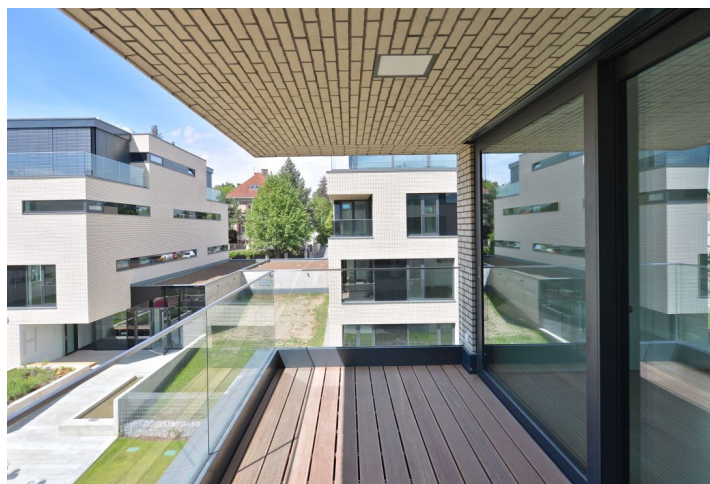
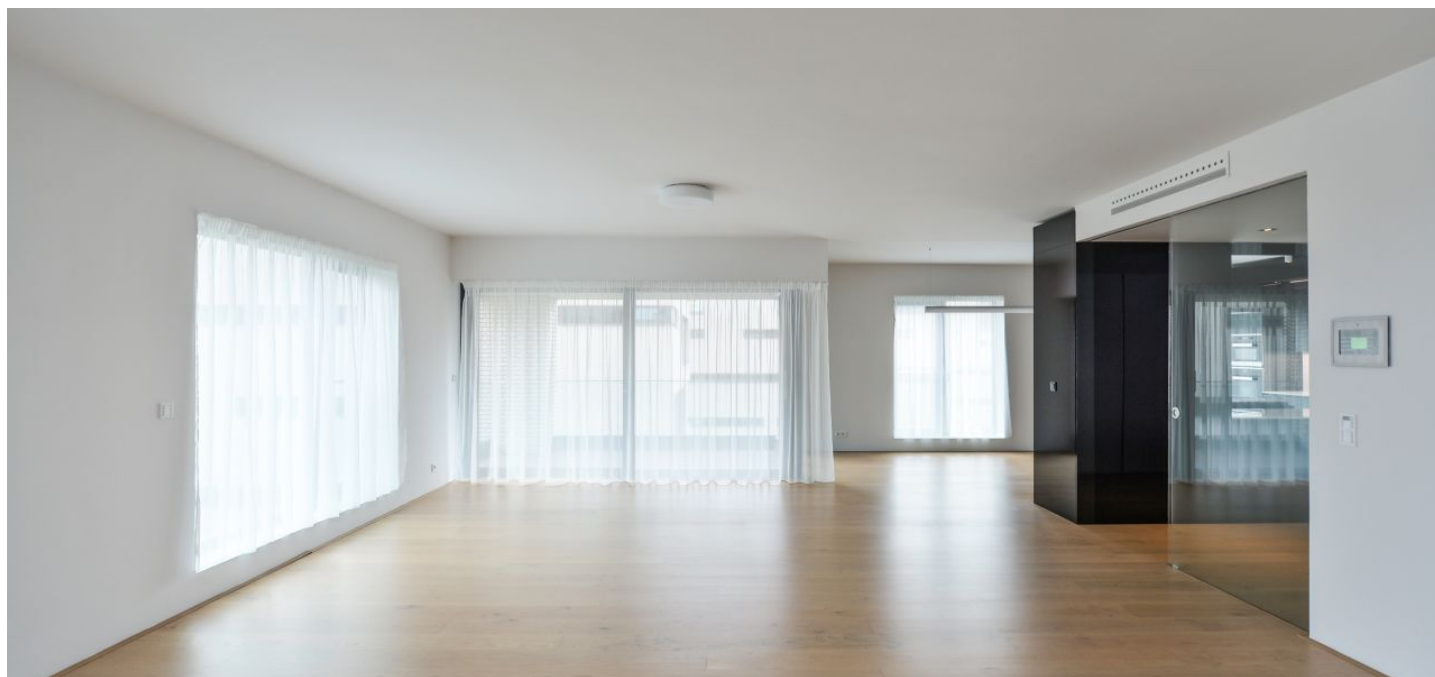


Apartment Three-bedroom (4+kk)

Rented

176 m², Prague 6, Střešovice, U Laboratoře



Apartment Three-bedroom (4+kk)

Rented

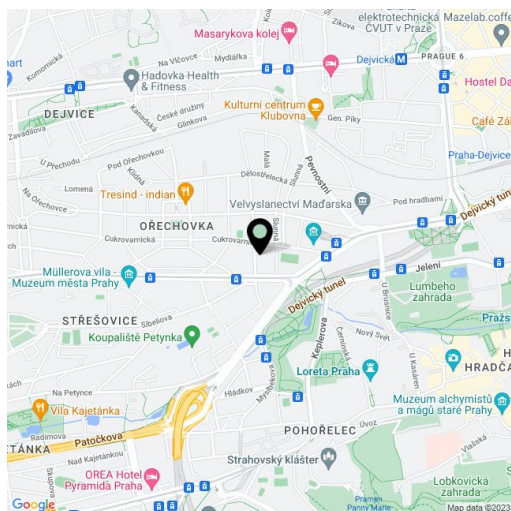
176 m², Prague 6, Střešovice, U Laboratoře

Total area	193 m²
Floor area*	176 m²
Terrace	17 m²
Parking	On-site garage parking.
Garage	Yes
Cellar	Yes
Service price	Common building charges, water, and heating CZK 28,000/month. Electricity is billed separately.
PENB	B
Reference number	22891
Available from	Immediately

Top quality first floor apartment with two terraces, situated in the exclusive Royal Triangle project designed by the renowned Schindler Seko architectural studio. Offering unique views of Petřín Hill, Prague Castle, and an adjacent green park, the project is located in the prestigious Střešovice residential area, on the edge of the attractive Ořechovka neighborhood, just a short walk from the Prague Castle. Excellent transportation connections, quick access to the city center and full amenities, convenient to the airport and international schools, a few minutes to the Dejvická and Hradčanská metro stations. Building amenities include a reception, common courtyard garden, and underground parking.

The interior features a comfortable living room with a fully fitted open plan kitchen and dining area, three bedrooms, two bathrooms, a walk-in closet, a utility room, a guest toilet, and an entry hall.

High-quality materials, oak floors, tropical wood on the terrace, floor heating, built-in wardrobes, capillary cooling system in the ceilings and ventilation with heat recovery, aluminum windows with triple glazing, washer, dryer, Miele kitchen appliances, alarm. Cellar, elevator, camera system. Two garage parking spaces are included in the rent.



* Area of the unit according to the Civil Code. The area consists of the sum total area of the entire unit bounded by perimeter walls.

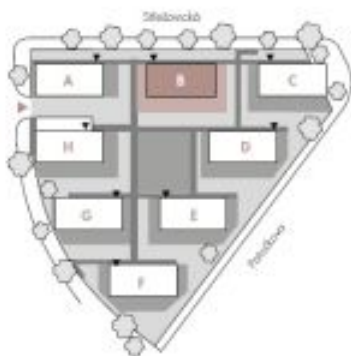
Apartment Three-bedroom (4+kk)

Rented

176 m², Prague 6, Střešovice, U Laboratoře



B.3.1
BUILDING B | 3RD FLOOR | 4+KK | 168 m²



01	KUPELNĚ HALA ENTRANCE HALL	14,02 m ²
02	OBYČNÍ POKOJ + KK LIVING ROOM	73,22 m ²
03	CHODBA HALLWAY	7,99 m ²
04	POKOJ ROOM	12,14 m ²
05	POKOJ ROOM	14,45 m ²
06	LOŽNICE BEDROOM	18,14 m ²
07	ŠATNA CLOSET	5,99 m ²
08	KOUPELNA BATHROOM	6,93 m ²
09	KOUPELNA BATHROOM	9,7 m ²
10	TECHN. MÍSTNOST TECHNICAL ROOM	2,44 m ²
11	WC	2,95 m ²
OBYTNÁ PLOCHA LIVING SPACE		167,97 m²
22	LOŽNICE LOGGIA	8,29 m ²
23	LOŽNICE LOGGIA	8,04 m ²
3114	SKLEP CELLAR	13,25 m ²
CELKEM TOTAL		197,55 m²



Plán je informativní a slouží pouze pro orientační účely. Měřítko: 1:100. Všechny rozměry jsou v souladu s projekční dokumentací. Všechny údaje jsou přibližné a mohou se lišit od skutečnosti.