

House Three-bedroom (4+kk)

Sold

220 m², Prague 5, Slivenec, Opálová



House Three-bedroom (4+kk)

Sold220 m², Prague 5, Slivenec, Opálová

Total area	220 m ²
Plot	785 m ²
Foot print	125 m ²
Garden	660 m ²
Floor area	210 m ²
Terrace	10 m ²
Parking	2 indoor and 3 outdoor parking spaces
Garage	Yes
Cellar	Yes
PENB	G
Reference number	22833

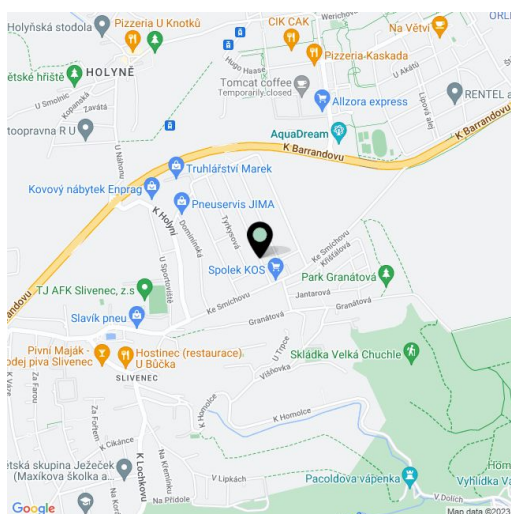
Boasting a distinctive design tastefully combining English and Scandinavian styles is this beautifully presented, fully furnished family house after a complete new rebuilding. This exceptional property boasts an outdoor pool, professionally landscaped garden and stunning interiors flooded by sunlight from large, west-facing windows. Move-in ready.

The ground floor is dominated by a generous living room with an open kitchen and dining area, with direct access to a paved patio and a swimming pool; there is also a bedroom, bathroom and utility room. Upstairs are 2 bedrooms (one of them with a terrace overlooking the garden and an ensuite walk-in closet), a bathroom, and a staircase hall. In the garden is a garden house with a study / guest room and utility room.

The house, which underwent a complete recent renovation for a new owner, features high-quality equipment: air-conditioning, American stove in the living room, solid wood flooring, wooden windows, high-quality kitchen appliances, built-in wardrobes and a gas boiler. All furniture and fixtures shown in the photographs included in the purchase price.

The house is located in a quiet residential area of Prague 5 - Slivenec, 3 minutes' walk from a bus stop with direct connection to Anděl. In Slivenec you can find a kindergarten and elementary school, tennis hall, restaurants, cafes and other services.

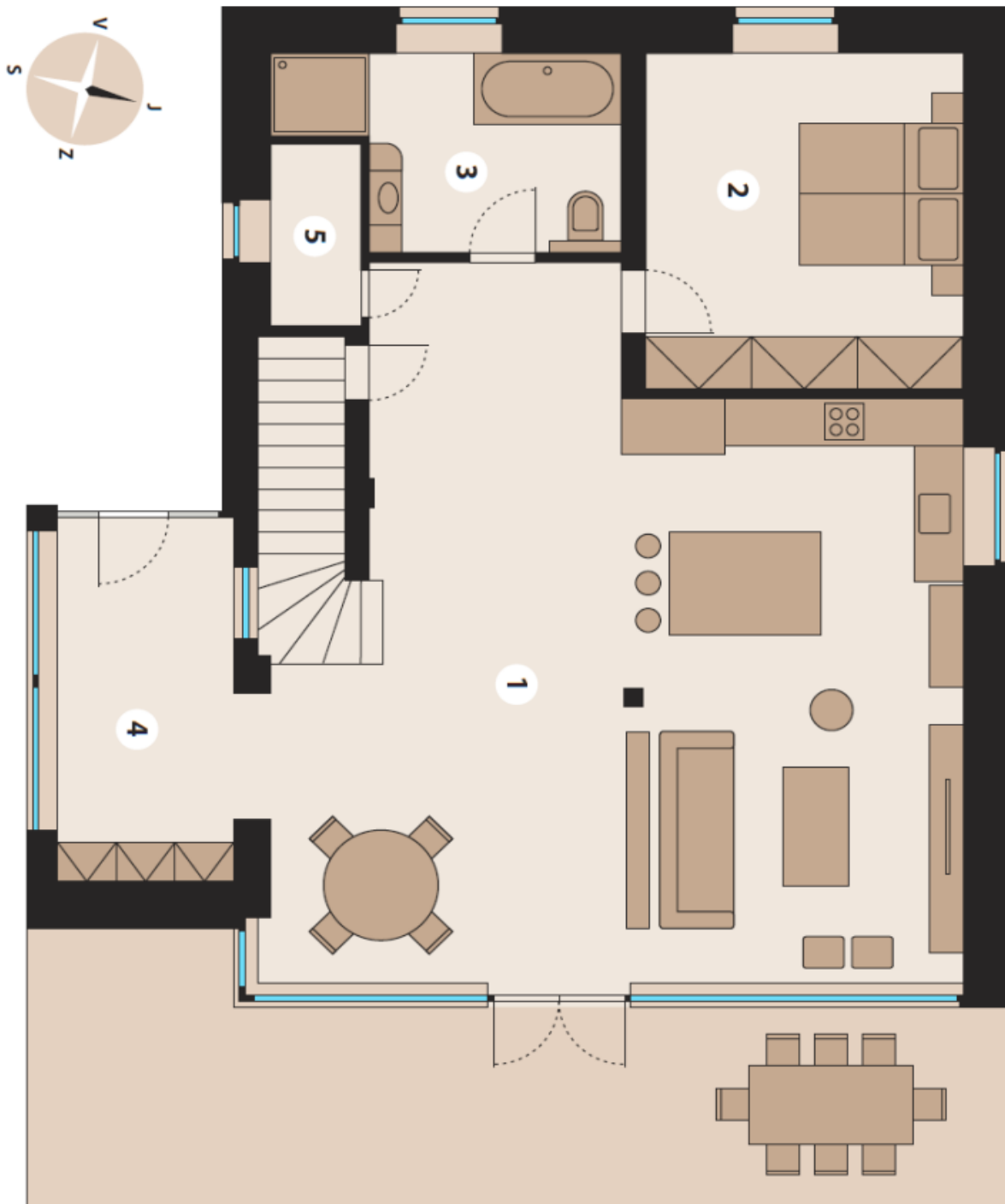
Interior 182 m², garden house 18 m², terrace 10 m², built-up area 125 m², garden 660 m², land 785 m².



House Three-bedroom (4+kk)

Sold

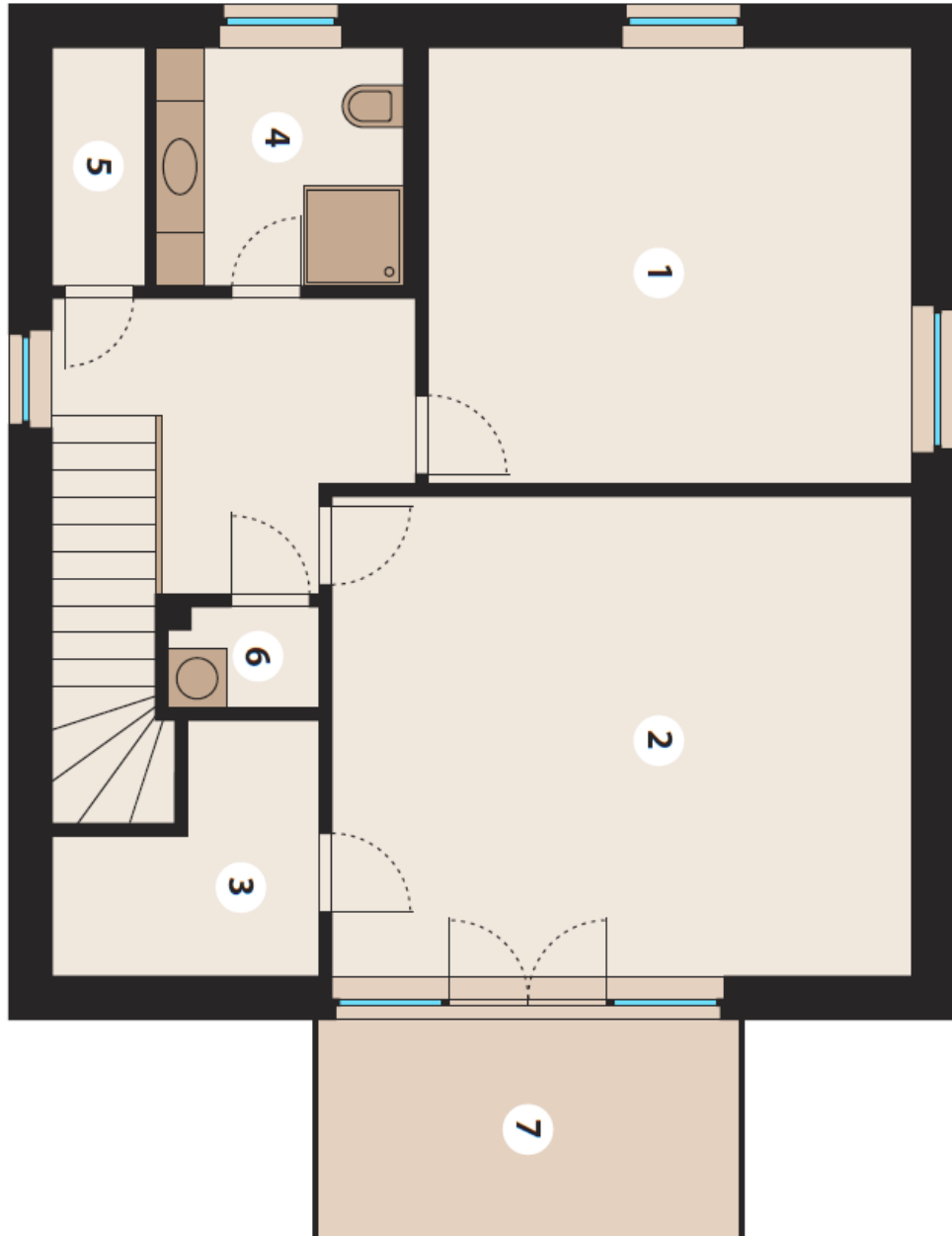
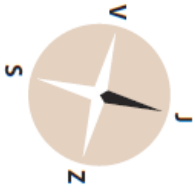
220 m², Prague 5, Slivenec, Opálová



House Three-bedroom (4+kk)

Sold

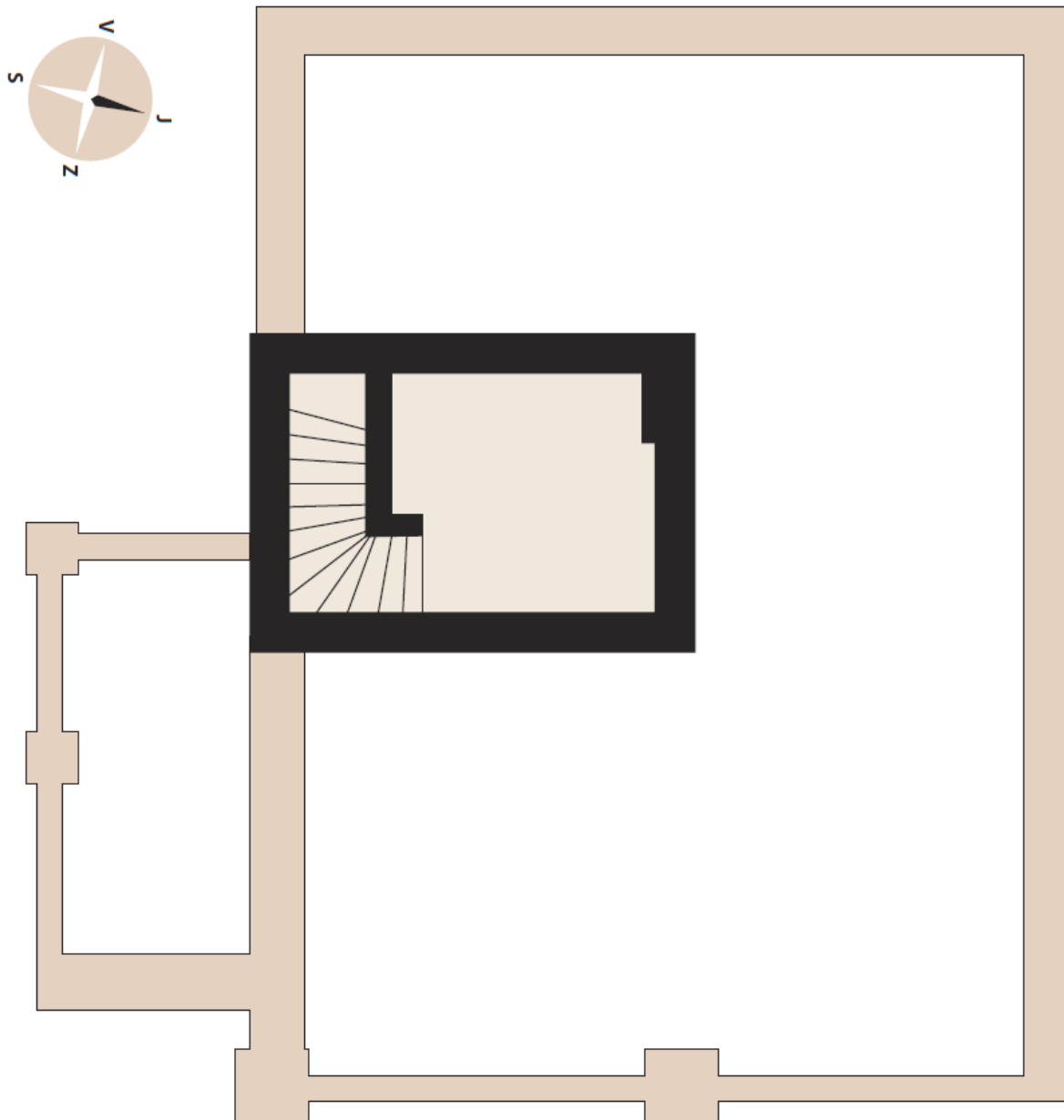
220 m², Prague 5, Slivenec, Opálová



House Three-bedroom (4+kk)

Sold

220 m², Prague 5, Slivenec, Opálová



House Three-bedroom (4+kk)

Sold

220 m², Prague 5, Slivenec, Opálová

