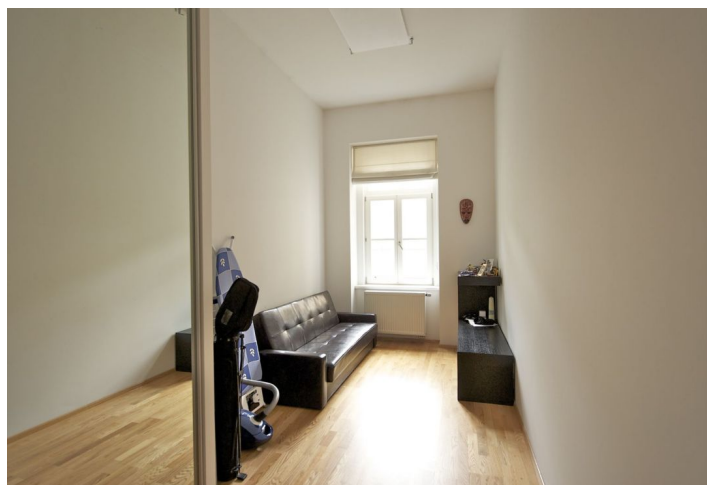




## Apartment Two-bedroom (3+kk)

Sold

101 m<sup>2</sup>, Prague 2, Nové Město, Pod Slovany





## Apartment Two-bedroom (3+kk)

**Sold**101 m<sup>2</sup>, Prague 2, Nové Město, Pod Slovany

Total area	101 m <sup>2</sup>
Parking	-
Cellar	Yes
Service price	5 200 CZK monthly
PENB	G
Reference number	22799

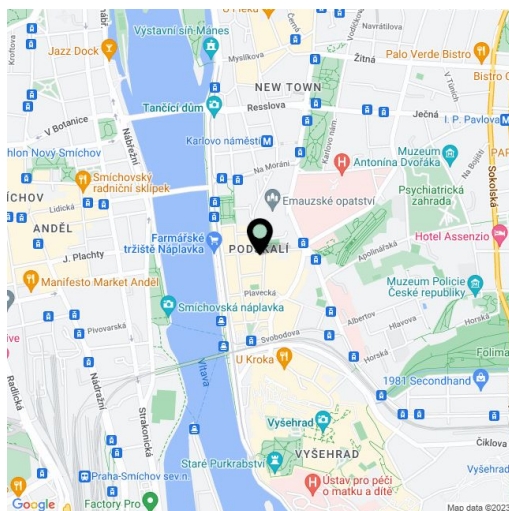
Partially furnished 2-bedroom apartment on the 1st floor of a completely renovated Art Deco building on a quiet street close to Palackého Náměstí square, the Emauzy monastery, Charles University Botanical Gardens and the Vltava riverbank, just a few minutes from a metro station and trams. The building boasts a private relaxation center with sauna for the residents.

The apartment consists of a spacious entrance hall with a walk-in closet, bright living room with a fully fitted open-plan kitchen, two bedrooms with built-in wardrobes, bathroom with bathtub, sink, bidet and toilet, and a guest toilet.

Equipped with floating wood floors and tiles, **new casement windows** with electric controlled roller blinds, solid wood replicas of the interior doors, fully fitted kitchen with **Siemens** appliances, including a coffee machine and built-in **Liebherr wine fridge**; suspended ceilings with spotlights, white plaster, and audio entry phone. The purchase price includes a **cellar**.

Romantic location close to Náplavka, within walking distance of Vyšehrad park and numerous cafes, wine bars and restaurants.

Interior 100.8 m<sup>3</sup>, cellar 3.2 m<sup>2</sup>.



\* Area of the unit according to the Civil Code. The area consists of the sum total area of the entire unit bounded by perimeter walls.