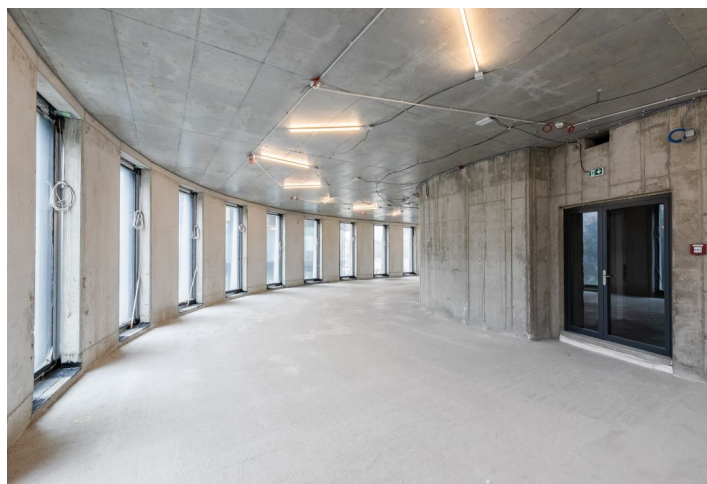
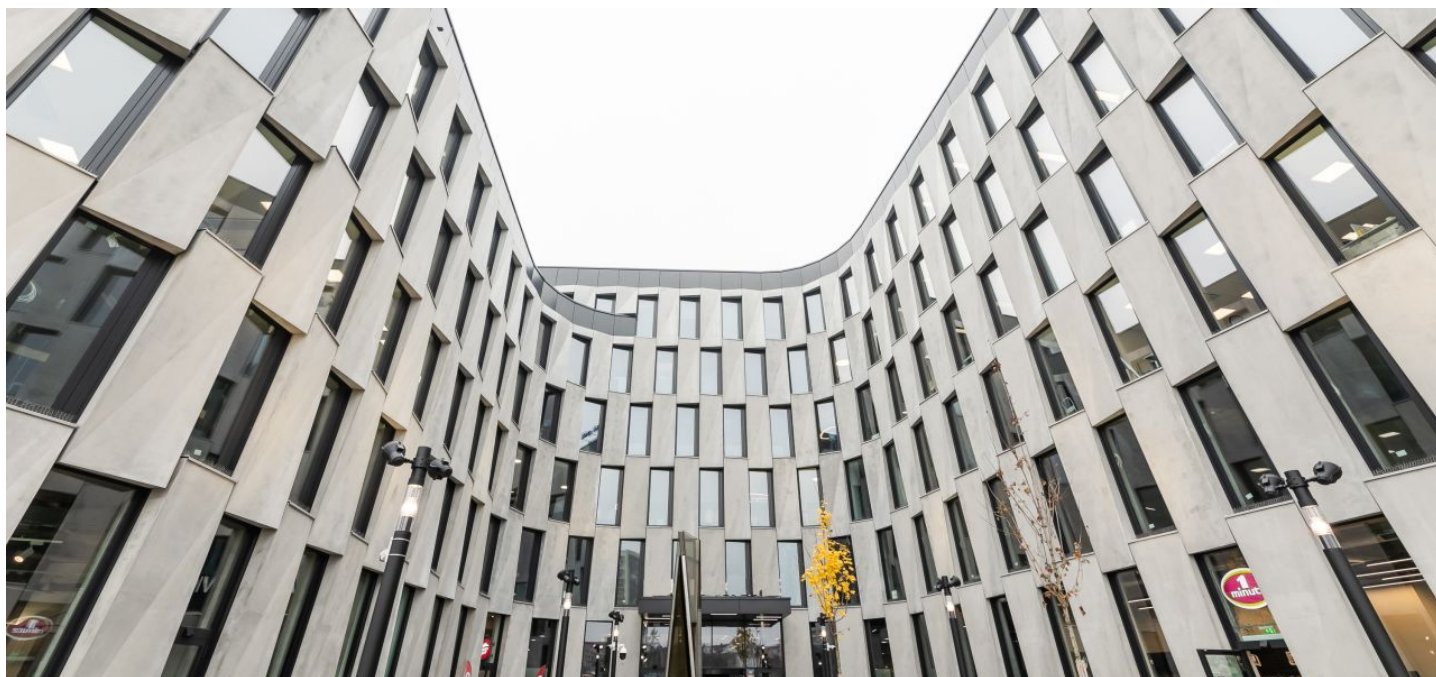




Office space

Prague 6, Vokovice, Evropská

Rented





Office space

Rented

Prague 6, Vokovice, Evropská

Service price	140 CZK monthly per m ²
Available area	518 m ²
Cellar	-
Parking	EUR 120 / ps / month
PENB	A
Reference number	22792

This new administrative center, consisting of two separate buildings, offers office and retail space for lease in Prague 6, with plenty of greenery on the rooftops of the buildings and green landscaping around the project.

Location:

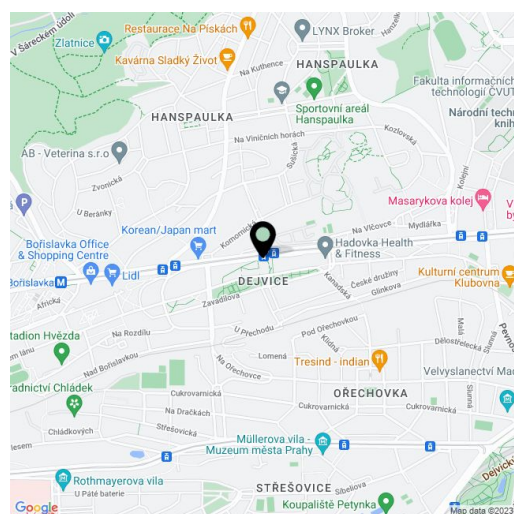
The complex is located on Evropská Street, which allows for excellent accessibility to the international Vaclav Havel Airport Prague and the city center. The Nádraží Veleslavín metro station (line A), and a tram and bus stop are next to the building. Easy access to the Prague Ring Road.

Features and Services:

- LEED platinum certification
- Central reception
- 24h security
- 24/7 access by magnetic cards
- CCTV
- Smoke detectors and sprinklers
- Wheelchair access
- Onsite facility manager
- Flexible office space
- Fitchettes on each floor
- External motorized window blinds (incl. manual control)
- Ventilation system that supplies fresh air
- Central ventilation system, heating via bench radiators, cooling by ceiling induction units
- Raised floors with floor boxes
- Efficient and sophisticated BMS
- Bike room with showers and bike racks
- Storage and archive spaces
- Restaurant/cafe + other services in the building
- Underground parking

Images might not accurately reflect the current state of the premises.

Rental and service charges are listed without VAT. Lessee pays no commission.

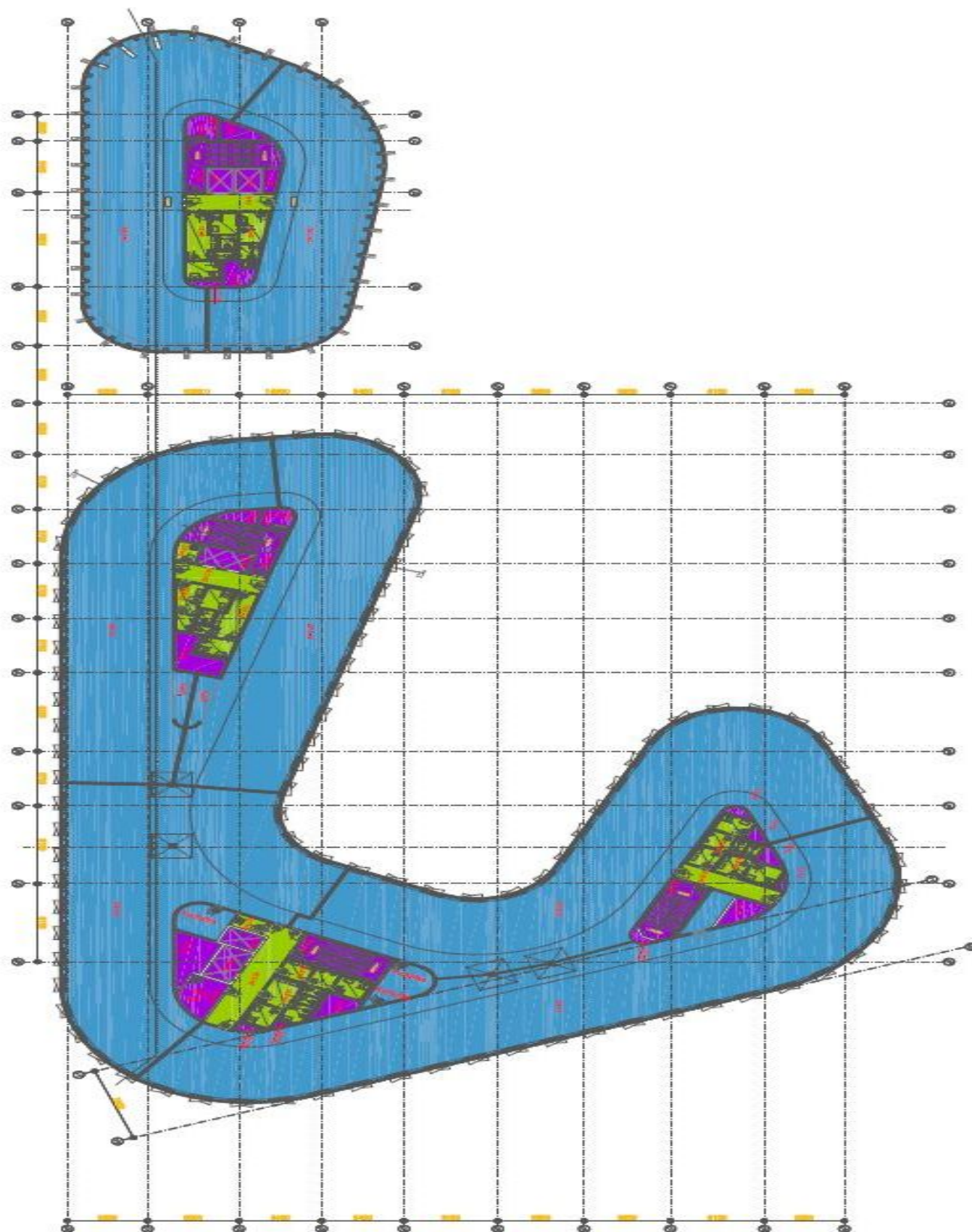




Office space

Prague 6, Vokovice, Evropská

Rented





Office space

Prague 6, Vokovice, Evropská

Rented

