

Apartment Three-bedroom (4+kk)

Rented

115 m², Prague 6, Bubeneč, náměstí Interbrigády



Apartment Three-bedroom (4+kk)

Rented

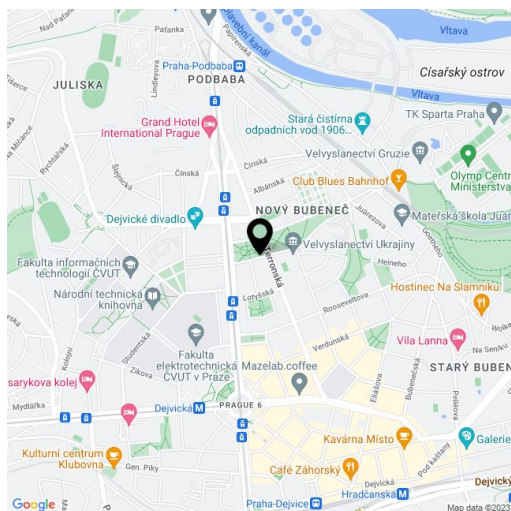
115 m², Prague 6, Bubeneč, náměstí Interbrigády

Total area	148 m ²
Floor area*	115 m ²
Terrace	33 m ²
Parking	Garage parking available.
Garage	Yes
Cellar	Yes
PENB	G
Reference number	22707
Available from	Immediately

This brand new 3-bedroom 2-bathroom split-level attic flat greatly benefits from two comfortable terraces (total of 33 m²) and views of the Prague Castle, Petřín Hill, and Baba green neighborhood. Situated on the top fifth floor of a traditional building with a new lift and a shared courtyard garden, right next to a green park. Located in a quiet Prague 6 neighborhood about a five min. walk to Dejvická metro station with full amenities in the area, and within walking distance of the largest park in Prague, Stromovka. Convenient to international schools in Prague 6 and the airport.

The lower level features a spacious living room with dining area, a fully fitted open plan kitchen and terrace access, a guest toilet, entry hall. The upper floor includes three separate bedrooms - two with a shared terrace, and two bathrooms (tub / walk-in shower, toilet).

Large windows, laminated floors, security entry door, independent gas boiler, dishwasher, audio entry phone, large basement storage unit. Double garage available a few minute walk from the building. Common building charges and deposit for utilities are billed separately. Interior: 115 m². Terraces: 15 and 18 m².

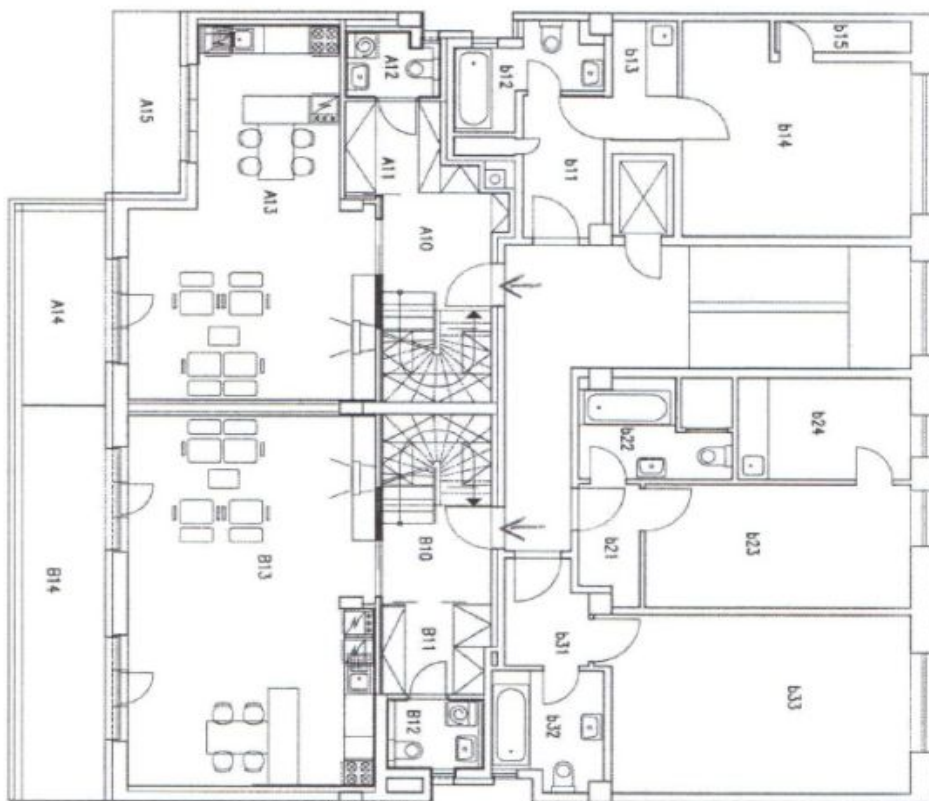


* Area of the unit according to the Civil Code. The area consists of the sum total area of the entire unit bounded by perimeter walls.

Apartment Three-bedroom (4+kk)

Rented

115 m², Prague 6, Bubeneč, náměstí Interbrigád



Přízemí

MÍSTO ČÍS	NÁZEV MÍSTNOSTI	PLOCHA [m ²]	PODLAHA
	BYT B		
A10	predstř. se schodištěm	10,22	plov. lamn.
A11	žalno	3,58	plov. lamn.
A12	záchod s pračkou	2,22	keram. dlaž.
A13	obýv. pokoj s kuch. linkou	30,56	plov. lamn.
A14	terasa	8,09	dřev. roštl
A15	střeš. před kuchyní		plech krytina

MÍSTO ČÍS	NÁZEV MÍSTNOSTI	PLOCHA [m ²]	PODLAHA
	BYT B		
B10	predstř. se schodištěm	8,61	plov. lamn.
B11	žalno	3,93	plov. lamn.
B12	záchod s pračkou	2,46	keram. dlaž.
B13	obýv. pokoj s kuch. linkou	38,05	plov. lamn.
B14	terasa	14,66	dřev. roštl