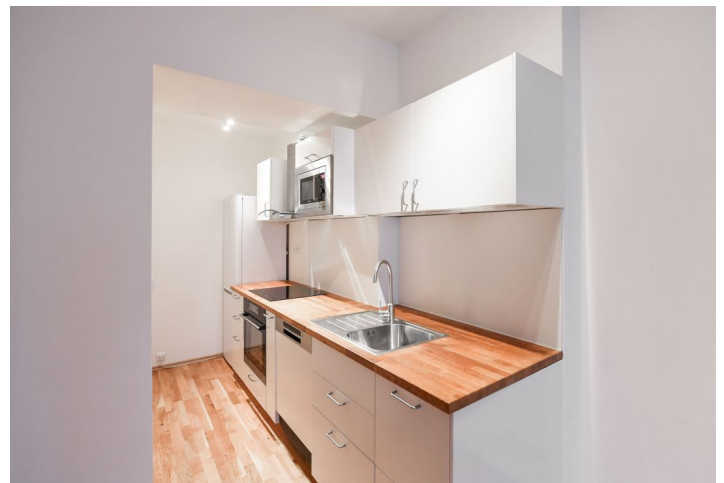


Apartment Two-bedroom (3+kk)

Rented

75 m², Prague 6, Břevnov, Nad Závěrkou



Apartment Two-bedroom (3+kk)

Rented

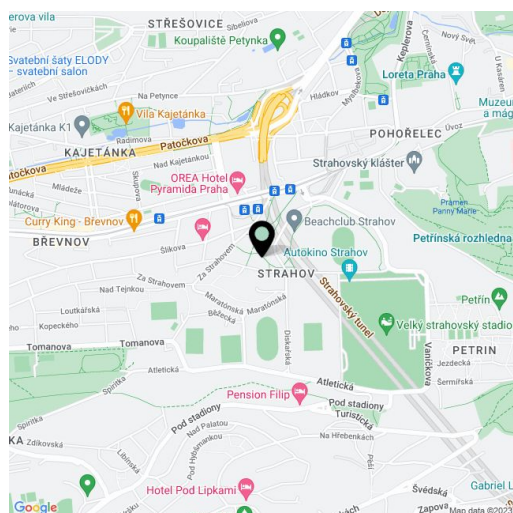
75 m², Prague 6, Břevnov, Nad Závěrkou

Total area	81 m ²
Floor area*	75 m ²
Loggia	6 m ²
Parking	-
Cellar	Yes
Service price	Deposit for services and water CZK 4,000/month for 2 persons, another person + CZK 1,000. Gas and electricity - transferred to the tenant.
PENB	C
Reference number	22529
Available from	Immediately

Quiet unfurnished upper ground floor 2-bedroom apartment with an enclosed balcony and green views, in one of the most attractive residential parts of Prague 6, Břevnov. The reconstructed residential building with an elevator is directly adjacent to a green park. In a popular location near Prague Castle (just a 15-minute walk), in close vicinity of Ladronka Park. Quick access to the city center, full amenities within walking distance.

The interior features a spacious living room with a fully fitted open plan kitchen and balcony facing the adjacent park, two separate bedrooms, a bathroom with a bathtub, a separate toilet, and an entry hall.

Wooden floors and tiles, security entrance door, gas boiler, dishwasher, microwave oven. **Cellar**.



* Area of the unit according to the Civil Code. The area consists of the sum total area of the entire unit bounded by perimeter walls.

Apartment Two-bedroom (3+kk)

Rented

75 m², Prague 6, Břevnov, Nad Závěrkou

