

## Apartment Four-bedroom (5+kk)

Sold

159 m<sup>2</sup>, Prague 4, Chodov, Divišovská



## Apartment Four-bedroom (5+kk)

Sold

159 m<sup>2</sup>, Prague 4, Chodov, Divišovská

|                  |                                    |
|------------------|------------------------------------|
| Total area       | 175 m <sup>2</sup>                 |
| Floor area*      | 159 m <sup>2</sup>                 |
| Terrace          | 16 m <sup>2</sup>                  |
| Parking          | 1 underground garage parking space |
| Garage           | Yes                                |
| Cellar           | -                                  |
| Service price    | 3 000 CZK monthly                  |
| PENB             | C                                  |
| Reference number | 22508                              |

**4-bedroom 2-bathroom split-level attic apartment with 2 terraces situated on the 6th floor of a modern building with lift, located in close proximity to the Chodov commercial center with metro connections (line C) to the city center.**

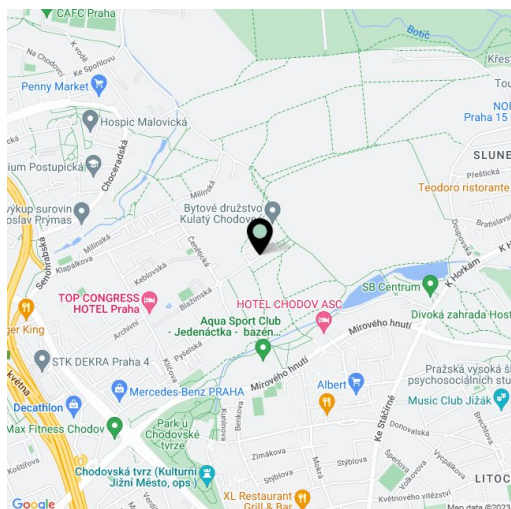
The lower level of the apartment offers a living room with **fireplace**, fully fitted open kitchen and terrace access, one bedroom with a large en-suite bathroom (**giant Jacuzzi**, sink) and access to the second terrace, walk-in closet, separate toilet, and entry hall with built-in wardrobes. The upper floor includes three bedrooms with built-in wardrobes, bathroom (bathtub, sink), and a separate toilet.

**Air-conditioning** in two bedrooms, floating floors, mosaic tiles, plastic windows with blinds, Miele appliances, audio entry phone. The purchase price includes **1 garage parking space**.

Quiet residential location with a wide range of sporting activities. In the vicinity there are several playgrounds, a swimming pool, a tennis center with an indoor hall and outdoor courts, Hostivař-Záběhlce Natural Park. Complete amenities within quick reach.

Cooperative ownership. The remaining annuity amounts to 17 000 CZK / month for 6 years.

Interior 158.38 m<sup>2</sup>, terrace 16.38 m<sup>2</sup>.

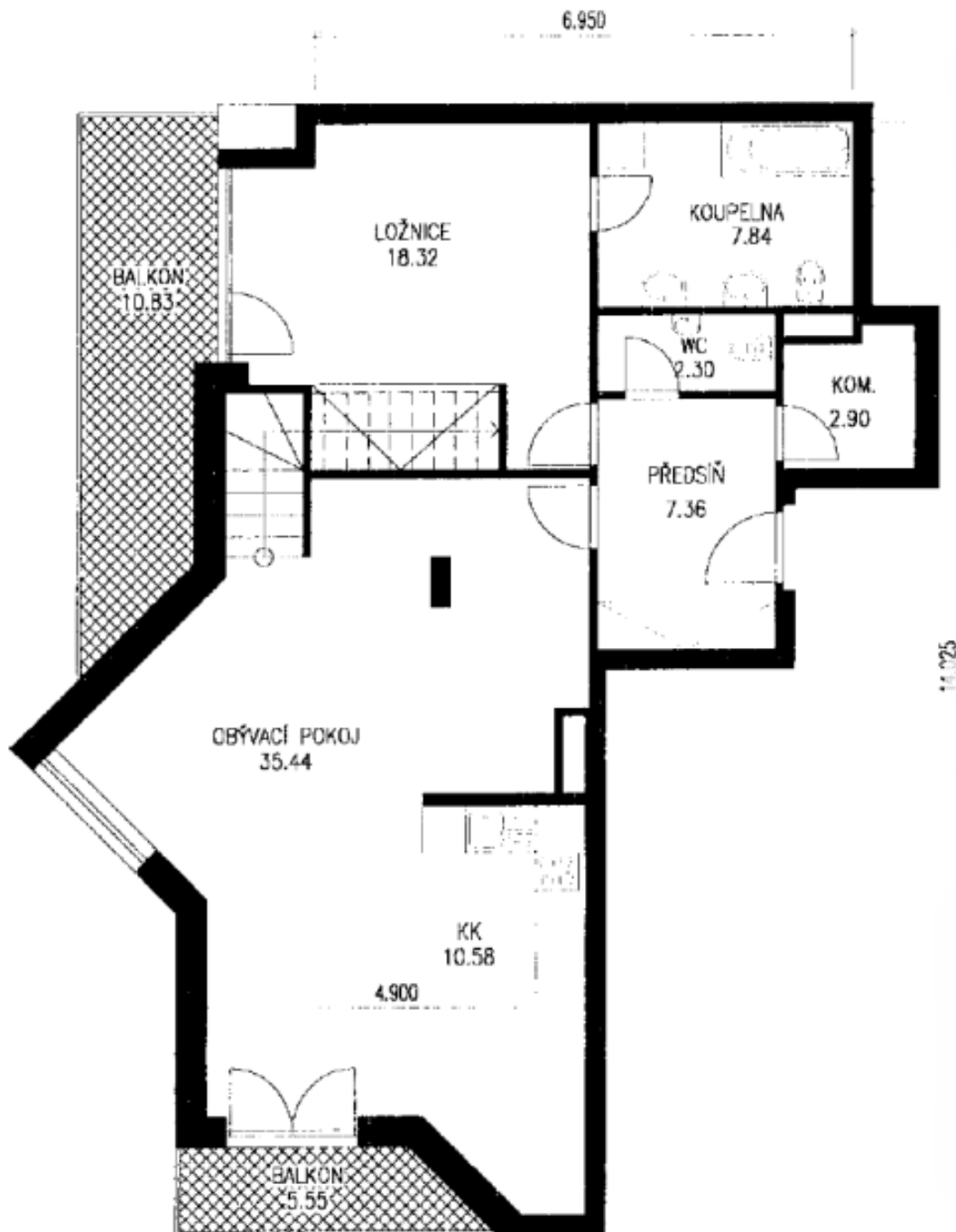


\* Area of the unit according to the Civil Code. The area consists of the sum total area of the entire unit bounded by perimeter walls.

## Apartment Four-bedroom (5+kk)

Sold

159 m<sup>2</sup>, Prague 4, Chodov, Divišovská



## Apartment Four-bedroom (5+kk)

Sold

159 m<sup>2</sup>, Prague 4, Chodov, Divišovská

