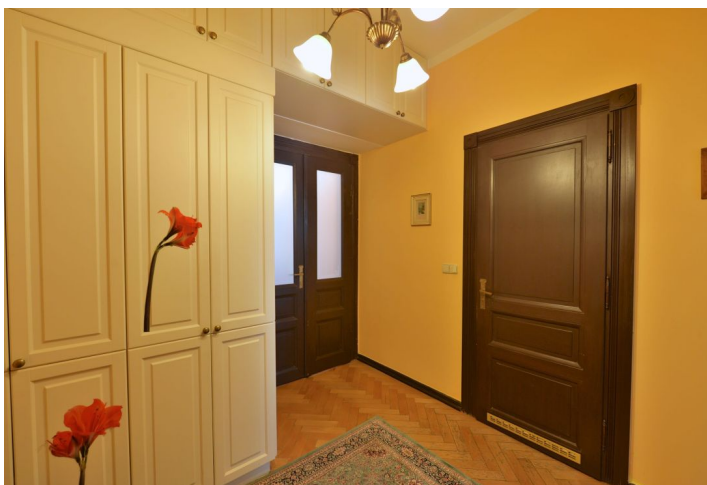


Apartment One-bedroom (2+1)

Sold

76 m², Prague 2, Vinohrady, Slezská



Apartment One-bedroom (2+1)

Sold

76 m², Prague 2, Vinohrady, Slezská

Total area	78 m ²
Floor area*	76 m ²
Balcony	2 m ²
Parking	-
Cellar	-
Service price	4 000 CZK monthly
PENB	G
Reference number	22489

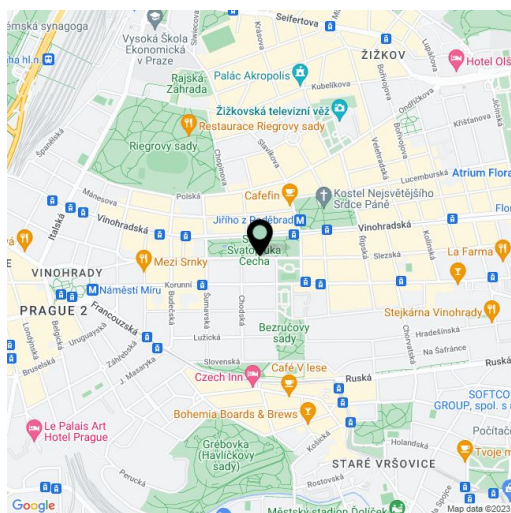
1-bedrom (2+1) apartment with balcony overlooking adjacent park, situated on the 1st floor of a beautiful residential building with many original features, in an attractive location only a few steps from the Jiřího z Poděbrad metro station.

The flat consists of a living room, eat-in kitchen, bedroom, bathroom with bathtub, and a hallway with built-in wardrobe. In the courtyard of the house is a very well landscaped, **spacious common terrace**.

Amenities include **parquet floors**, casement windows, wooden interior and entrance doors, gas boiler. There are many preserved original features in the house, including **original stained glass** or portal entrance doors. Lift only from the upper floors.

Sought-after location with full amenities and excellent access downtown thanks to the nearby metro station and tram stops. Nearby is Riegrovy sady park with an indoor swimming pool and breathtaking views of the center of Prague. In the vicinity you can find a selection of fine cafes and restaurants.

Interior 76 m², balcony 2 m².



* Area of the unit according to the Civil Code. The area consists of the sum total area of the entire unit bounded by perimeter walls.