



## Apartment Two-bedroom (3+1)

Sold

105 m<sup>2</sup>, Prague 2, Vinohrady, Slezská





## Apartment Two-bedroom (3+1)

**Sold**105 m<sup>2</sup>, Prague 2, Vinohrady, Slezská

Total area	105 m <sup>2</sup>
Parking	-
Cellar	-
PENB	G
Reference number	22488

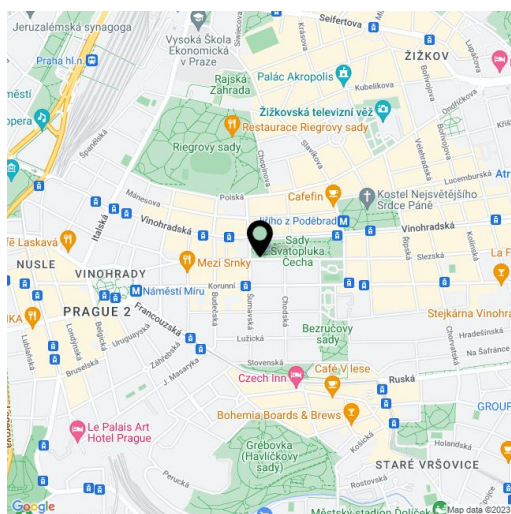
**Sunny apartment suitable for complete renovation with windows facing the adjacent park, situated on the 3rd floor of a residential building with an elevator. The apartment is located in an attractive residential area, just a 3 minutes' walk from the metro and tram stops at Jiřího z Poděbrad square.**

The proposed layout consists of a spacious living room with kitchen area, bedroom with en-suite bathroom, second bedroom with walk-in wardrobe, shared bathroom, separate toilet, and a central hall. The current state can be seen on the plans.

Equipped with original parquet floors, **large casement windows**, original wooden doors. Possibility of complete reconstruction by the developer at extra cost.

Popular residential area within easy reach downtown and within walking distance of Riegrovy sady park. Full civic amenities in the area.

Interior 105.1 m<sup>2</sup>.



\* Area of the unit according to the Civil Code. The area consists of the sum total area of the entire unit bounded by perimeter walls.



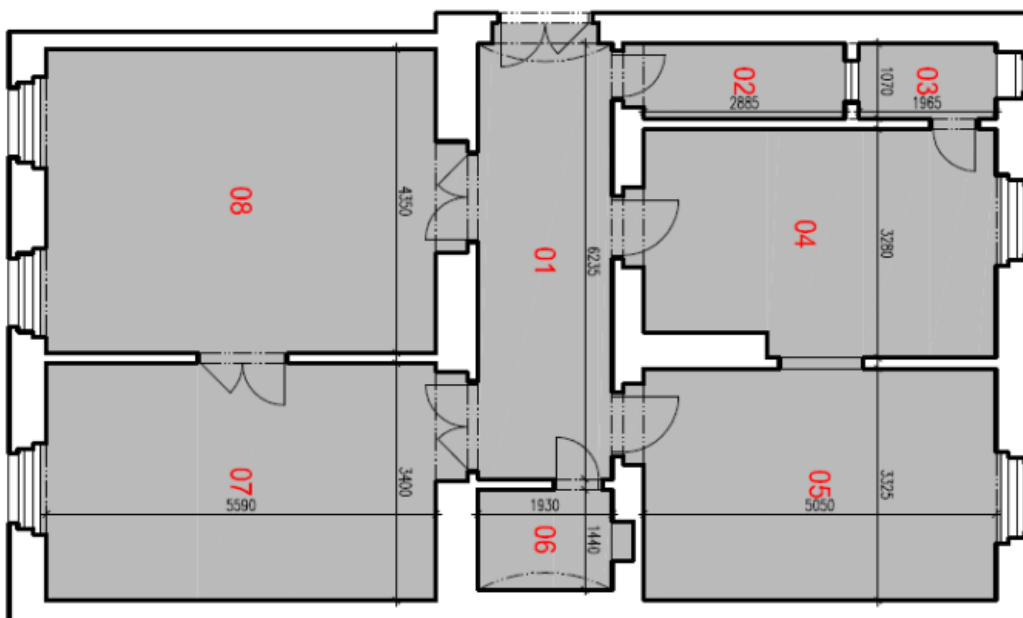
## Apartment Two-bedroom (3+1)

105 m<sup>2</sup>, Prague 2, Vinohrady, Slezská

Sold



4. NP - NÁVRH REKONSTRUKCE



4. NP - STÁVAJÍCÍ STAV