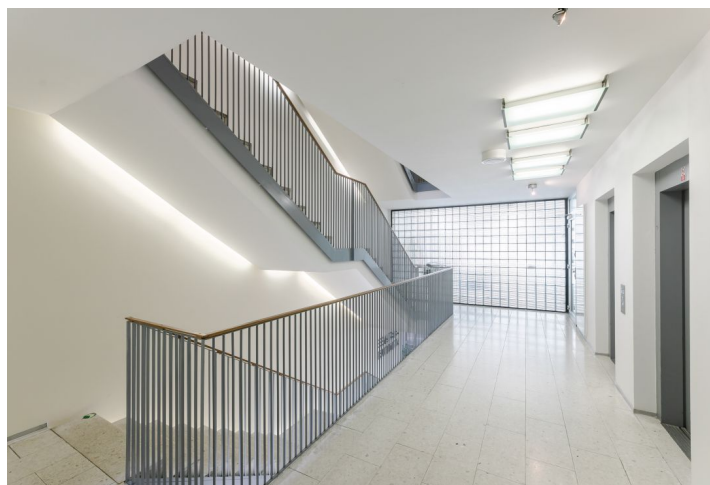
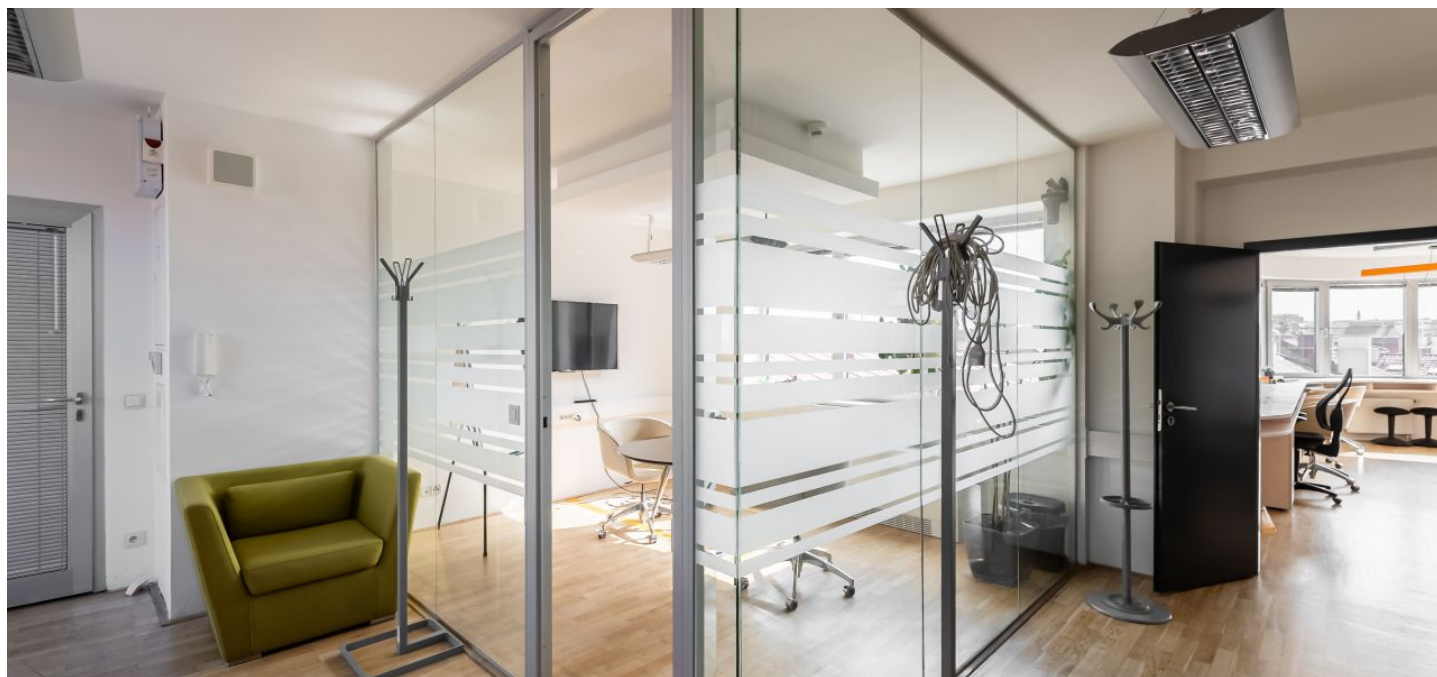


## Office space

Rented

Prague 5, Smíchov, Štefánikova



## Office space

Rented

Prague 5, Smíchov, Štefánikova

Service price	195 CZK monthly per m <sup>2</sup>
Available area	215 m <sup>2</sup>
Cellar	-
Parking	EUR 115 / ps / month
PENB	C
Reference number	22450

Administrative building with modern office space for lease on the 3rd floor located on the border of the Prague districts of Smíchov and Malá Strana. Attractive courtyard with a smaller apartment building. The architectural design of the building comes from the renowned studio D. A. Studio.

**Location:**

Excellent accessibility by car and public transportation—within walking distance of the Anděl metro station (line B), a number of tram and bus stops, and a train station. Easy connections to the Prague Ring Road, the D5 highway to Germany, and the Prague Václav Havel International Airport.

**Features and Services:**

- Central reception
- 24/7 security
- Air-conditioning (fan coil units)
- Openable windows
- Suspended ceilings
- Storage
- Parking spaces

Images might not accurately reflect the current state of the premises.

Rental and service charges listed without VAT. Lessee pays no commission.

