

Apartment Four-bedroom (5+kk)

Rented

336 m², Prague 1, Nové Město, Truhlářská



Apartment Four-bedroom (5+kk)

Rented

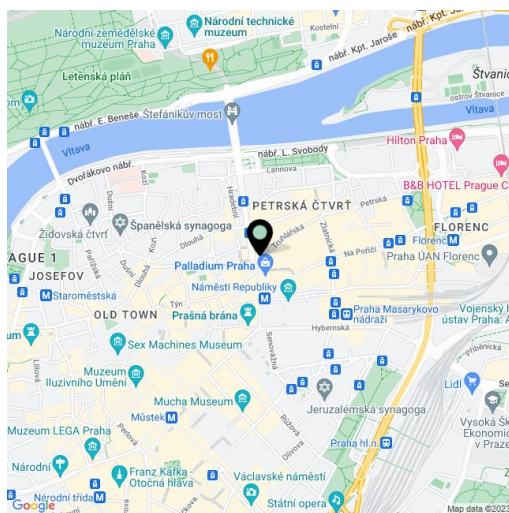
336 m², Prague 1, Nové Město, Truhlářská

Total area	336 m ²
Parking	Garage parking.
Garage	Yes
Cellar	-
PENB	G
Reference number	22386
Available from	Immediately

Top quality contemporary 4-bedroom 3-bathroom attic flat designed by the de.fakto architectural studio, situated on the fifth top floor of a luxury residence with reception and parking. This historic building with a Classicist facade underwent complete refurbishment incl. the installation of new energy-saving technologies. Situated in the very city center just moments from the Palladium and Kotva shopping centers, within walking distance of the Old Town and Wenceslas Squares. Excellent transportation connections - a minute walk from Náměstí Republiky metro station, line B, and multiple tram links.

The interior features a spacious entry hall, a large bright living room with a fully fitted and equipped open kitchen, three bedrooms (master bedroom with an en-suite bathroom and walk-in closet), two family bathrooms, and a large walk-in closet / storage room.

State-of-the-art equipment, lift straight to the flat, wooden floors, high ceilings, cooling and heating in the ceilings and walls, air exchange system, security entry door, floor heating in the bathrooms, air-conditioning, atelier windows and skylights, built-in wardrobes, massage bath tub, intelligent home control system, WiFi, video entry phone. The flat can be furnished at a higher rent. On-site garage parking available at CZK 6000/space/month. Common building charges and utilities CZK 16,511/month. Available from June 2016.

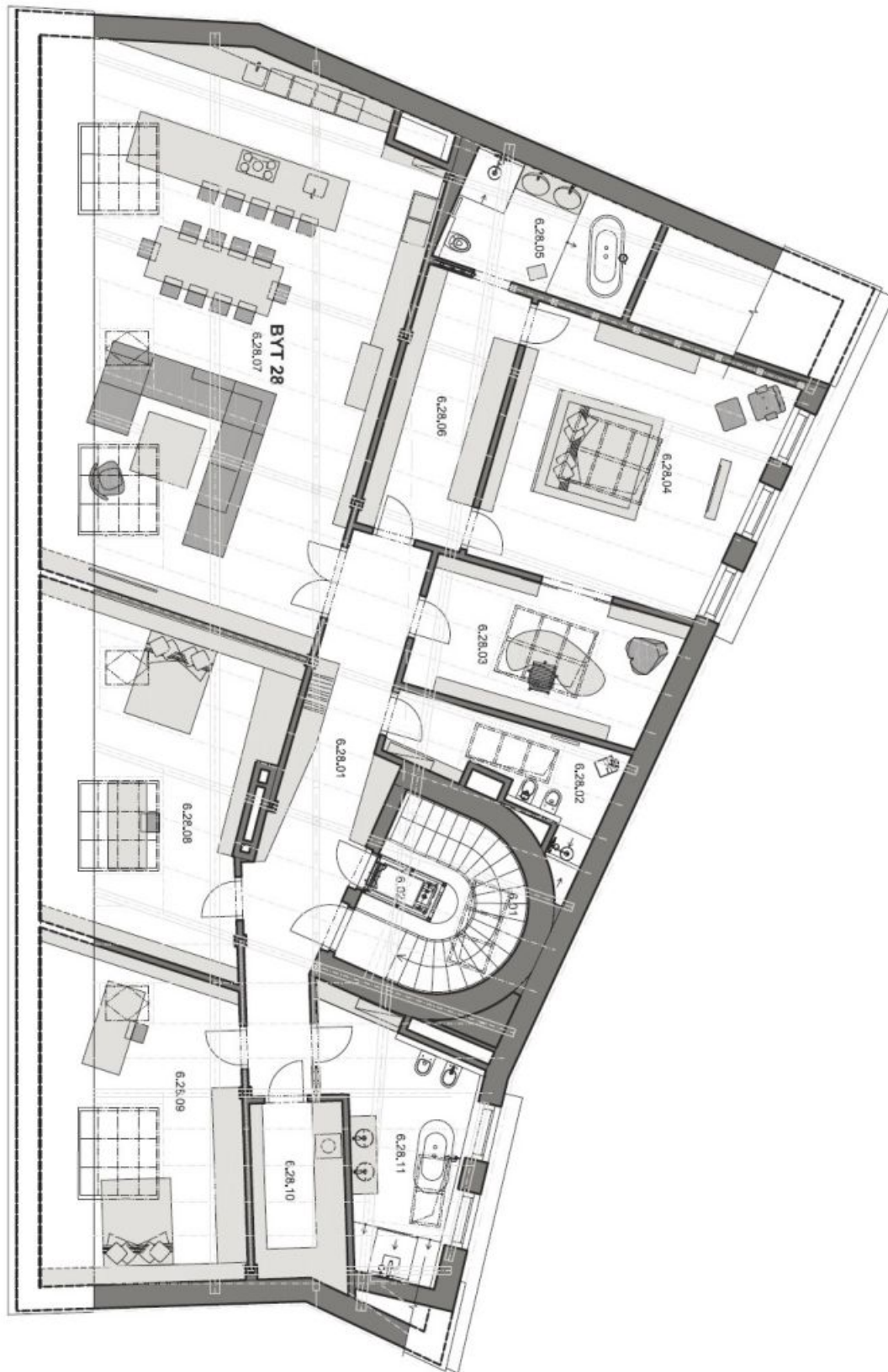


* Area of the unit according to the Civil Code. The area consists of the sum total area of the entire unit bounded by perimeter walls.

Apartment Four-bedroom (5+kk)

Rented

336 m², Prague 1, Nové Město, Truhlářská



Apartment Four-bedroom (5+kk)

Rented

336 m², Prague 1, Nové Město, Truhlářská

