

Apartment Five-bedroom (6+1)

Rented

239 m², Prague 7, Bubeneč, Havanská



Apartment Five-bedroom (6+1)

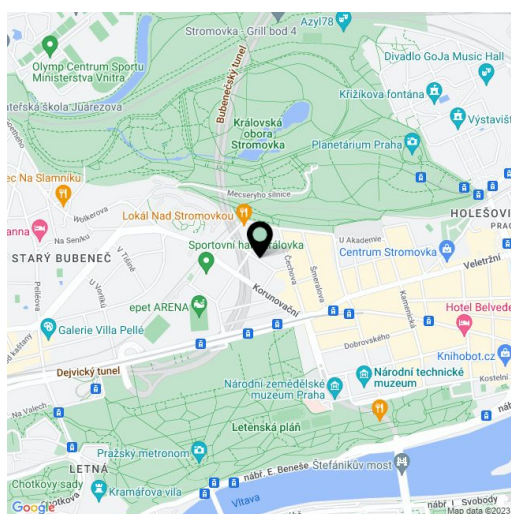
Rented239 m², Prague 7, Bubeneč, Havanská

| | |
|------------------|--------------------|
| Total area | 239 m ² |
| Parking | - |
| Cellar | Yes |
| PENB | G |
| Reference number | 22312 |
| Available from | Immediately |

Boasting a wonderful location virtually steps from Stromovka Park, the largest park in Prague, this is a completely newly renovated atypical 5-bedroom 2-bathroom split-level flat, on the ground floor of a traditional building. Located in a quiet street, just a 15 minute walk to the city center through another popular Prague park - Letná. Full amenities within easy reach, numerous tram connections, convenient to Hradčanská (line A) and Vltavská (line C) metro stations. Easy access to the airport and Prague 6 international schools.

The spacious interior features one walk-through and four separate bedrooms, living room, a fully fitted and equipped kitchen, two bathrooms - each with two walk-in showers and a double sink, two separate toilets, storage room, and entry hall. There is also a large entrance hall accessible directly from the street, plus a basement floor tiled hobby room with vaulted ceilings, accessible via a circular staircase.

Street facing bedroom and living room windows, new kitchen, vinyl flooring, tiles, carpets, vertical blinds, independent gas heating, induction cooktop, dishwasher, microwave oven, UPC cable for the Internet and TV, alarm. Common building charges and deposit for utilities around CZK 8000 per month.

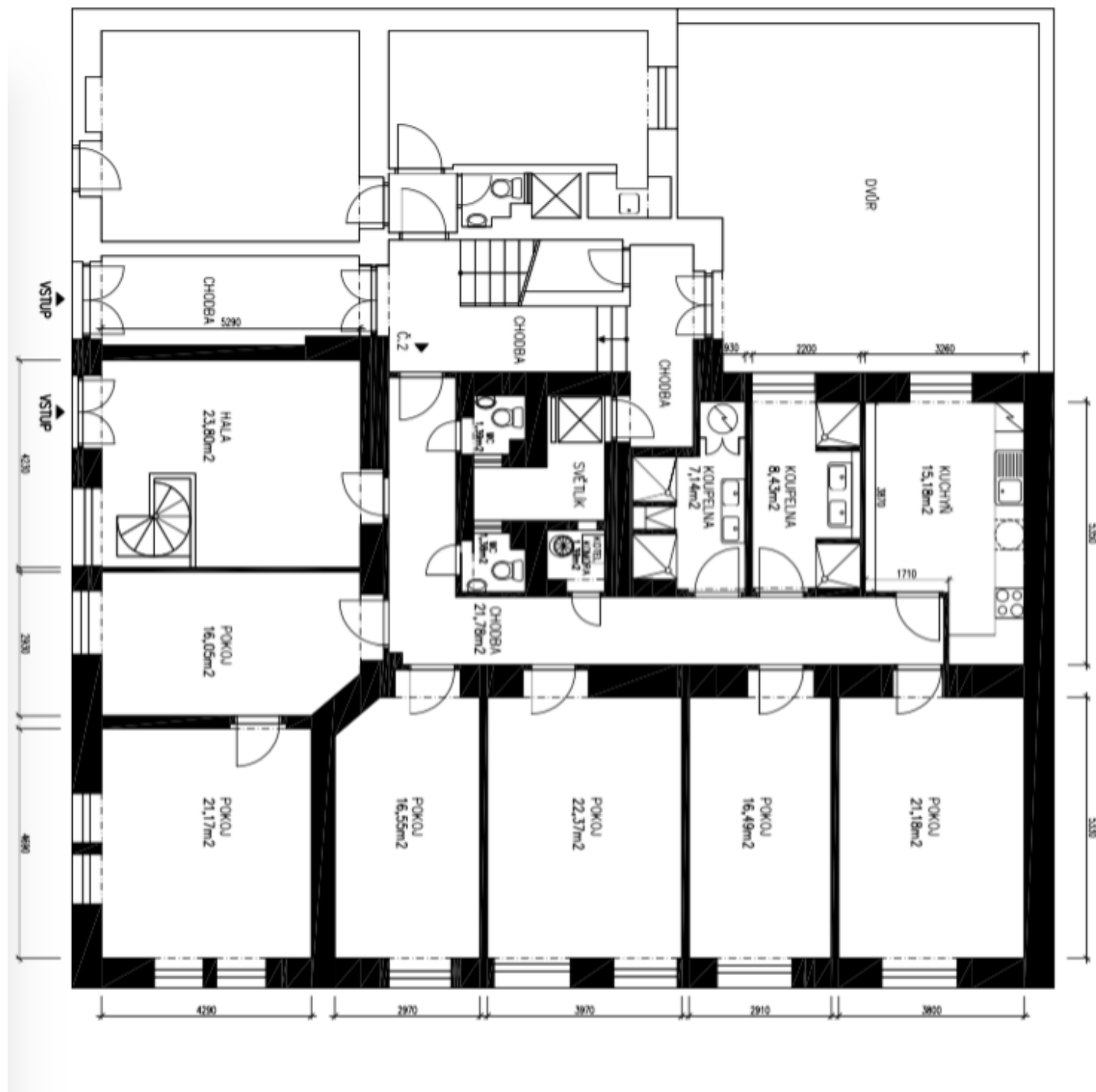


* Area of the unit according to the Civil Code. The area consists of the sum total area of the entire unit bounded by perimeter walls.

Apartment Five-bedroom (6+1)

Rented

239 m², Prague 7, Bubeneč, Havanská



Apartment Five-bedroom (6+1)

Rented

239 m², Prague 7, Bubeneč, Havanská

